



EIDER AND HAWTHORN
APARTMENTS

A NEW CHAPTER FOR HENDON

BARRATT
— LONDON —

W E L C O M E T O
H E N D O N W A T E R S I D E

“Architecture that integrates seamlessly with the Welsh Harp and abundant parkland will create a highly enjoyable place to live, allowing you to make use of these enviable natural assets.”

Hendrik Heynes \ Director \ Allies and Morrison Architects

A new dawn, a new day

Something new and very exciting is happening in north London. Hendon Waterside is part of the major regeneration of West Hendon covering over 30 acres and encompassing over 2,000 homes. The development will also provide new parks, leisure facilities and amenities within the beautiful and green surroundings of the Welsh Harp reservoir.

Hendon Waterside will revitalise this part of London by creating a vibrant new area to live, shop and work in. The multi-million pound regeneration of neighbouring Brent Cross and Cricklewood intends to ‘create a new gateway for London and a vibrant new urban area in Barnet’*.

Hendon Waterside is your chance to be part of this brand new neighbourhood. Whether you enjoy relaxing on your balcony, taking in the glorious views of the green spaces surrounding the development, or exploring the exciting new area, this is a unique lifestyle destination.

Located in the centre of the development, both blocks, Eider and Hawthorn Apartments, wrap around landscaped courtyard gardens with some apartments benefiting from views of the Welsh Harp Reservoir and others from views of The Green – a communal park that runs through the development.

*Source: barnet.gov.uk



Computer generated images are indicative and for illustrative purposes only



A visionary regeneration

Once complete, the development will offer residents stylish new homes, set within expansive landscaped communal gardens, adjacent to the beautifully restored lakefront.

Most homes will have their own private balcony or terrace and everyone will have access to an abundance of green open space and play areas.

The layout and design of Hendon Waterside has been carefully considered to ensure it delivers greatly

improved pedestrian and vehicular access into and around the development.

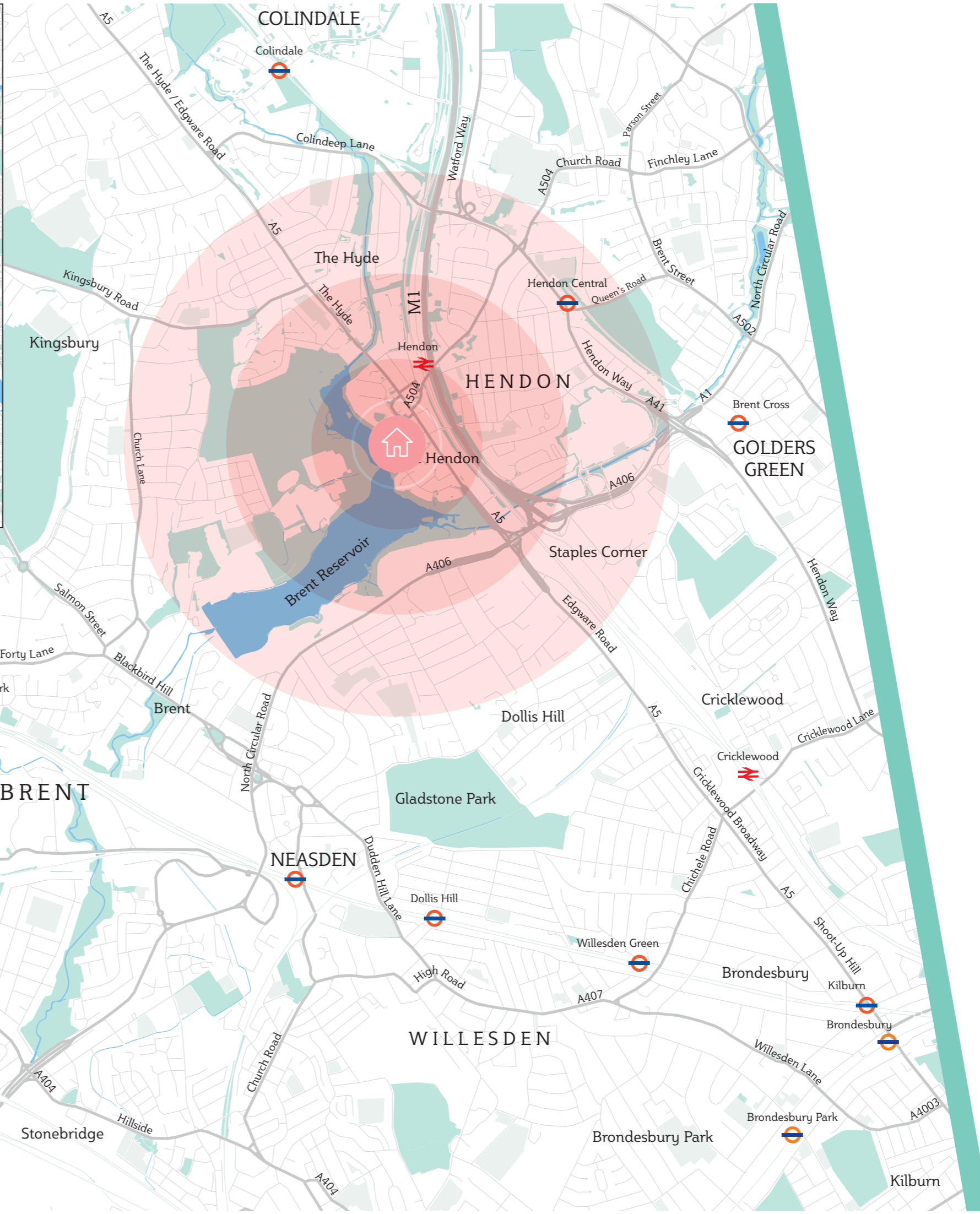
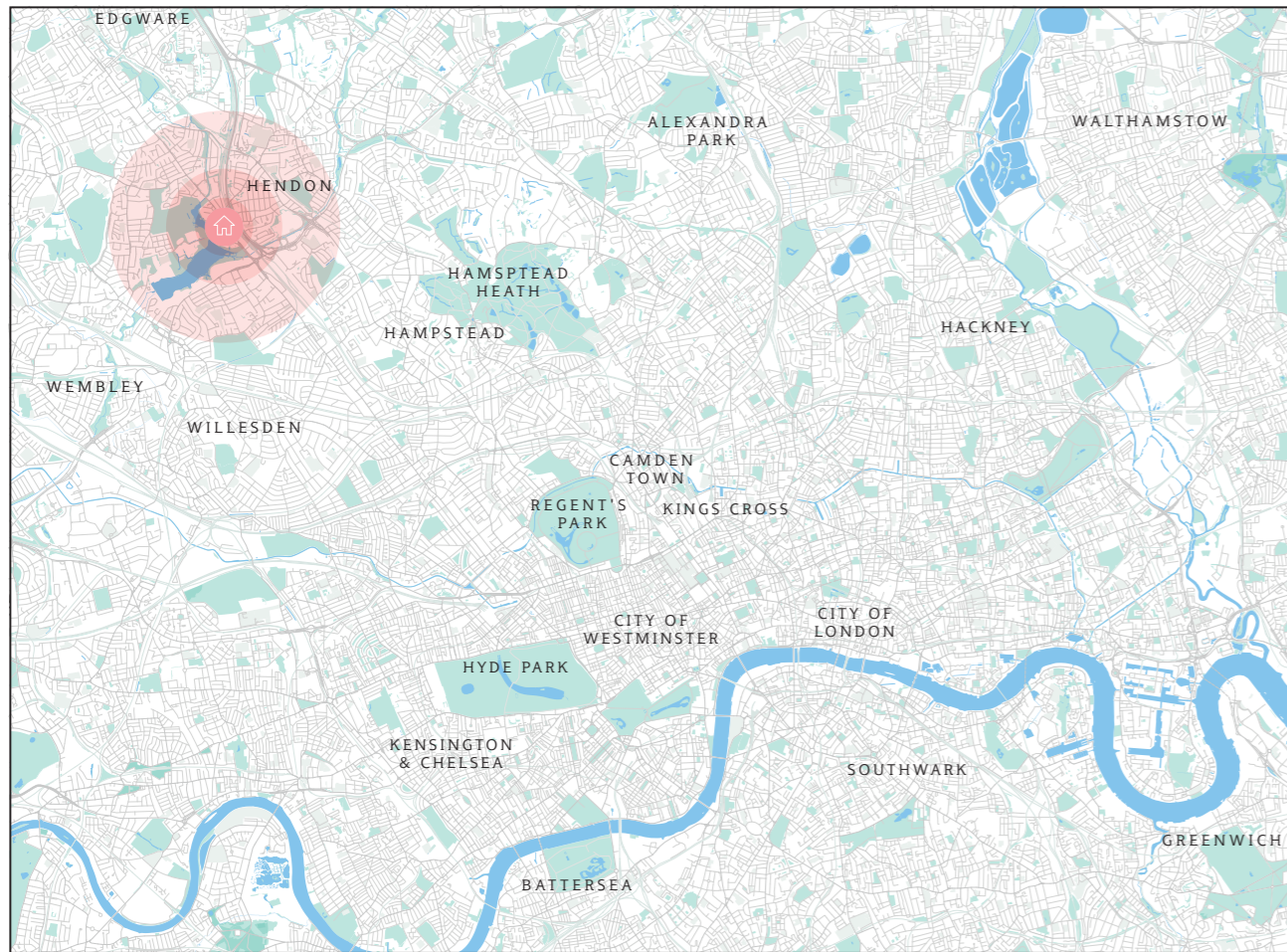
Leisure and community facilities, new amenities and transport links will also be a key focus in the creation of this new and exciting neighbourhood.

Hendon Waterside has been awarded the prestigious Built for Life commendation, a government-endorsed accolade for well-designed homes and a recognised industry seal of approval.

“The ambition that drives Hendon Waterside is to build on the already successful regeneration of the surrounding area and create a thriving, cohesive and sustainable neighbourhood where people will want to live and stay.”

Hendrik Heynes \ Director \ Allies and Morrison Architects

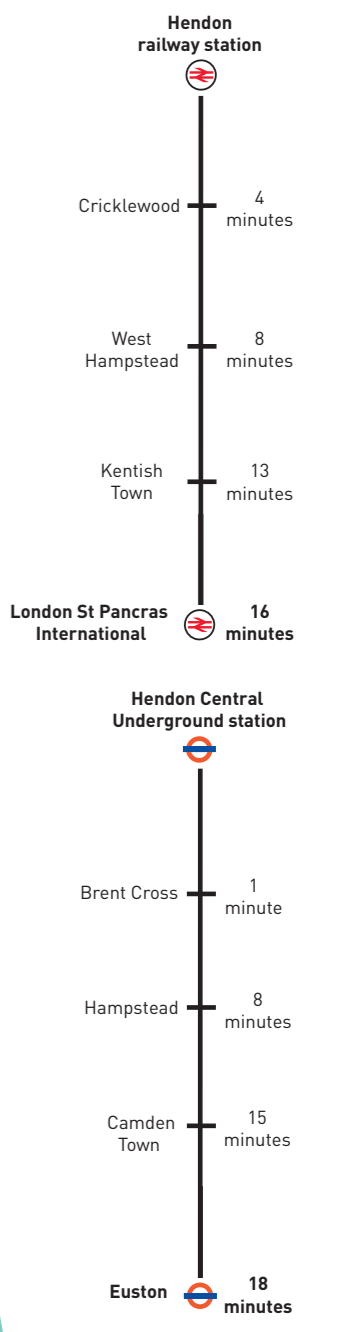
Computer generated images are indicative and for illustrative purposes only



Surround yourself with the very best of north London

Hendon Waterside sits next to the beautiful Welsh Harp and the rejuvenated Broadway, soon to be joined by new shops and cafés.

Nearby, Brent Cross Shopping Centre is the go-to shopping and destination in north London.



Travel times based on information from Google Maps

London within easy reach

Walking from Hendon Waterside

- 6 minutes to Hendon railway station
- 18 minutes to Hendon Central Underground station
- 21 minutes to Brent Cross Shopping Centre

Train from Hendon station Thameslink

- 8 minutes to West Hampstead (change for Jubilee line)
- 16 minutes to St Pancras International
- 20 minutes to Farringdon
- 26 minutes to Blackfriars

Tube from Hendon Central (Northern line)

- 1 minute to Brent Cross
- 8 minutes to Hampstead
- 10 minutes to Belsize Park
- 14 minutes to Camden Town
- 17 minutes to Euston
- 28 minutes to Charing Cross
- 29 minutes to Oxford Circus
- 31 minutes to Waterloo
- 32 minutes to Bank
- 37 minutes to Euston Square
- 40 minutes to Liverpool Street
- 49 minutes to Canary Wharf

Bus from West Hendon Broadway

- 20 minutes to Brent Cross Shopping Centre – 142 bus
- 41 minutes to Golders Green – 83 bus

Airport by train from Hendon

- 29 minutes to Luton
- 1 hour 18 minutes to Gatwick

Airport by car

- 34 minutes to Luton (27.9 miles)
- 40 minutes to Heathrow (22.5 miles)
- 54 minutes to London City (22.8 miles)

Car from Hendon Waterside

- 8 minutes to the M1
- 32 minutes to the M25

Located in Zone 3, Hendon Waterside is just six minutes' walk to Hendon railway station. From here you can be at St. Pancras International (and on to Europe) in 16 minutes and Luton Airport in less than half an hour.

Hendon Central Underground station on the Northern line is about 18 minutes' walk away, getting you to Bank and the West End in approximately half an hour. Bus routes are well served too with regular services to Brent Cross and Golders Green.

The M1 and M25 are both within easy reach and the nearby A5 runs straight into central London. And, with the added bonus of a car club, you can rent a car to get around as and when you need to. In fact, as part of the travel plan for West Hendon, Barratt London

will contribute a £300 voucher for each new home at Hendon Waterside to use towards car club membership, Oyster card credit or a cycle voucher.**

Its proximity to rail, underground, bus services and motorways will additionally help establish Hendon as a unique part of London.



*Travel times are approximate only. Sources: tfl.gov.uk and maps.google.com
 **Terms and conditions apply, speak to a Sales Adviser for more information.

Natural beauty and wildlife

Originally built to supply water to the Regent's Canal, today the Welsh Harp is a valuable leisure destination. Both a Site of Special Scientific Interest and a Local Nature Reserve, it's an important breeding site for waterbirds and a good place to spot other wildlife too.

With footpaths, trails and woods surrounding its 110 acres of open water, there's plenty of space for walkers and runners to explore and enjoy. To get out on the water, the Welsh Harp Sailing Association and Wembley Sailing Club offer tuition for beginners as well as racing programmes for experienced sailors. Or why not try your hand at canoeing, windsurfing or paddle boarding?





Popular places to explore

When you're in need of a little retail therapy, Brent Cross is close by and is quickly becoming a world-class shopping and entertainment destination, complete with a new high street, shops, restaurants and leisure facilities.

Nearby areas such as Hampstead, Primrose Hill and Belsize Park are home to pavement cafés, characterful pubs and independent boutiques and restaurants, while Camden Lock is famous for its vibrant Stable Market and eclectic shops.

On leisurely weekends you can explore the 70 hectares of green space and open water that surround Hendon Waterside, nearby Fryent Country Park and a number of local golf courses. The popular RAF Museum is in neighbouring Colindale.



Every modern convenience

At Hendon Waterside, you are well catered for with an assortment of on-site facilities, designed around the demands of London's modern lifestyle.

A daytime concierge service will take care of your parcels, and a private fitness suite*, abundance of landscaped gardens and green open spaces offer you the chance to relax or work out at your leisure.

Two communal roof terrace gardens are located on the fifth floor of Hawthorn Apartments and the third floor of Eider Apartments, offering residents a space to unwind and socialise.

When you're in need of a little retail therapy, The Broadway with its new shops and restaurants will be just outside your front door.

*To be completed in 2019





Beautiful outside and in

Whether you choose a one, two or three-bedroom residence, you'll enjoy a home filled with light and space.

Open-plan living areas feature floor-to-ceiling glazing allowing natural light to flood in.

Kitchens are furnished with a full range of modern appliances, making cooking and entertaining a pleasure.

Contemporary bathrooms and en suites, complete with stylish fittings in white and chrome, are finished with attractive ceramic wall tiling.

For outdoor relaxation or entertaining in the comfort of your own home, every one of the apartments has its own private balcony or terrace.

Two lifts serve all apartments within each building and car parking* will be available for both Eider and Hawthorn Apartments.



*Car parking will be available for use in autumn 2019



Computer generated images are indicative and for illustrative purposes only



Computer generated image - development layout is intended for illustrative purposes only and may be subject to planning

Site plan

An impressive regeneration scheme comprising over 2,000 one, two and three-bedroom homes. Located in Zone 3 and adjacent to the Welsh Harp Reservoir, Hendon Waterside is within walking distance of Hendon railway station and Hendon Central Tube station.

The latest phase, Eider and Hawthorn Apartments, is a collection of one, two and three-bedroom apartments. All homes have private outdoor space and benefit from a daytime concierge service. Car parking and a residents' fitness suite will also be available in 2019.

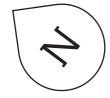
- 01 School*
- 02 Community centre*
- 03 Hendon railway station (6-minute walk)

*Proposed amenities. Please speak to a Sales Adviser for more information.



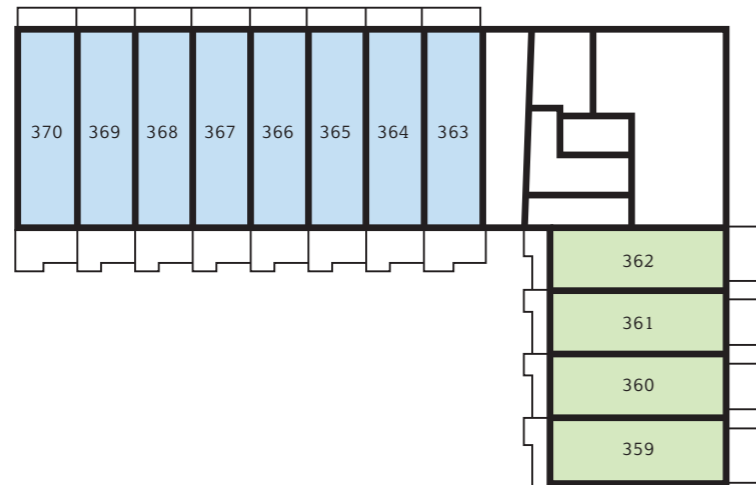


Eider Apartments Floor plates



One-bedroom apartments
 Two-bedroom apartments
 Three-bedroom apartments

Ground Level



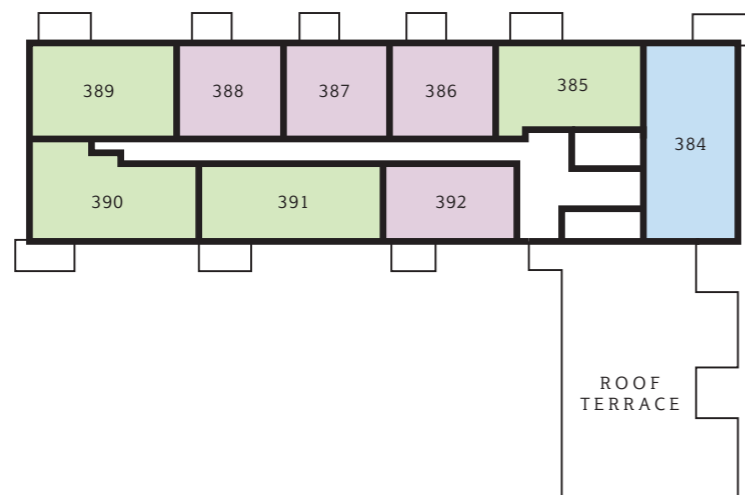
Level 1



Level 2



Level 3



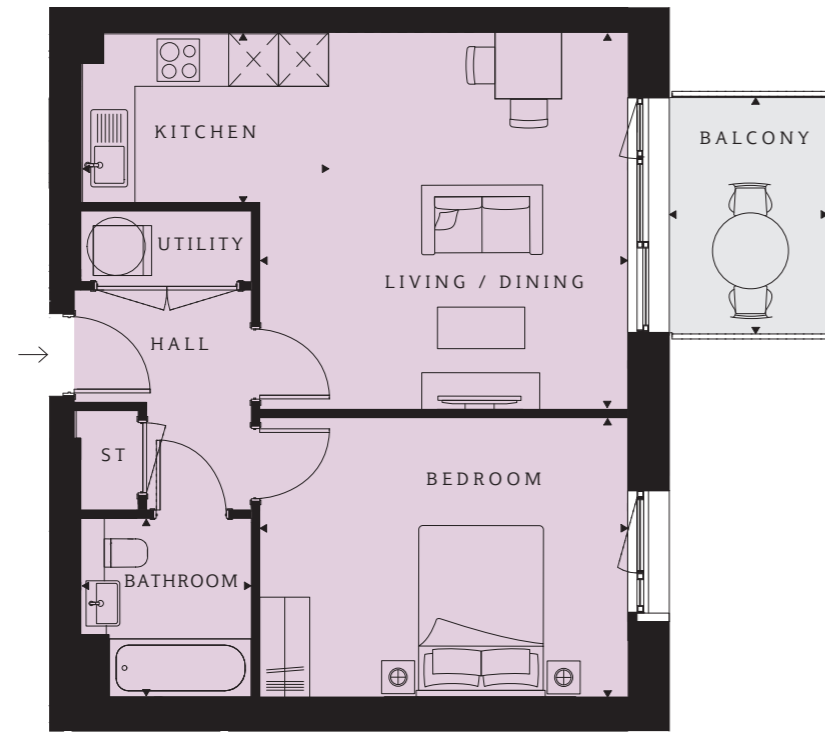
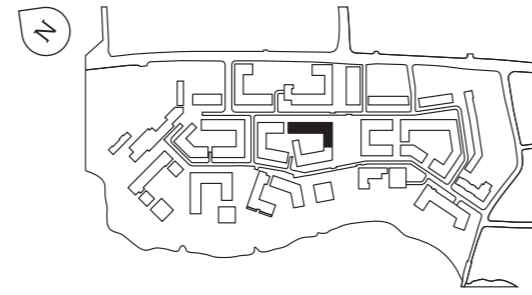
Level 4



Level 5



Eider Apartments 1 bedroom apartment



PLOT 371 (1)

Kitchen
9'9" x 6'8" (2980 x 2050mm)

Living/Dining
14'10" x 14'6" (4535 x 4424mm)

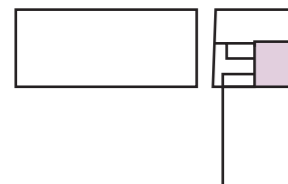
Bedroom
14'6" x 11'0" (4424 x 3360mm)

Bathroom
7'1" x 6'8" (2150 x 2050mm)

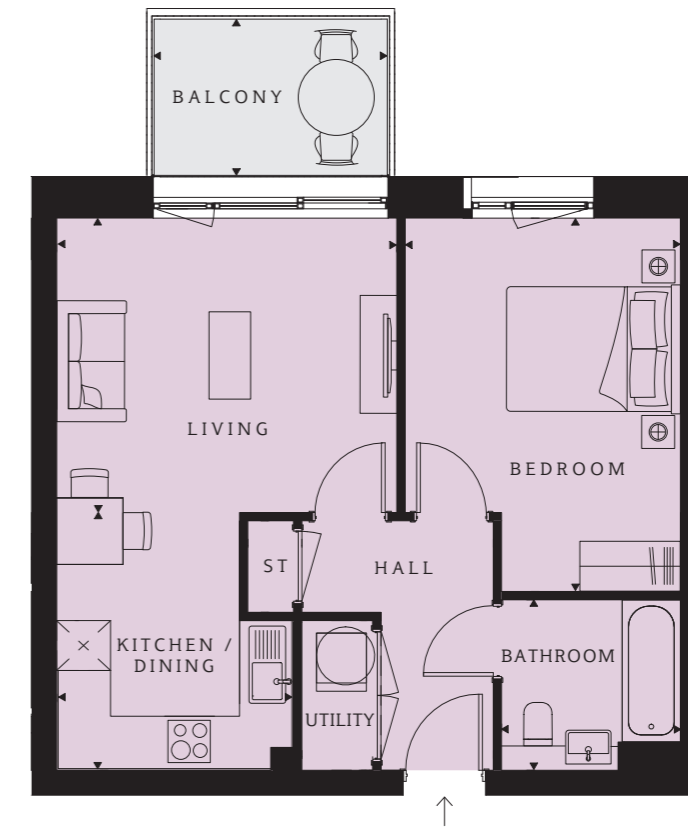
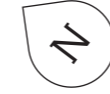
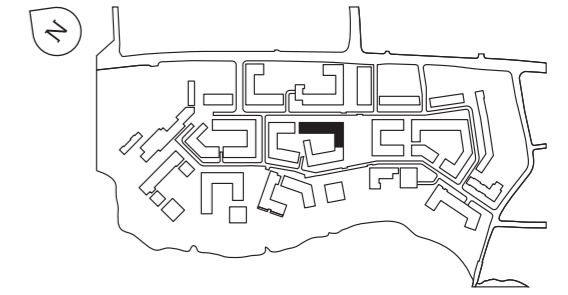
TOTAL AREA
247 sq ft (23 sq m)

Balcony
9'4" x 6'2" (2858 x 1888mm)

Windows are subject to changes



Eider Apartments 1 bedroom apartment



PLOT 377 (2)

Kitchen/Dining
10'2" x 9'4" (3100 x 2850mm)

Living
13'5" x 11'7" (4090 x 3540mm)

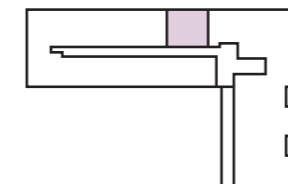
Bedroom
14'9" x 10'10" (4490 x 3310mm)

Bathroom
7'0" x 6'8" (2150 x 2050mm)

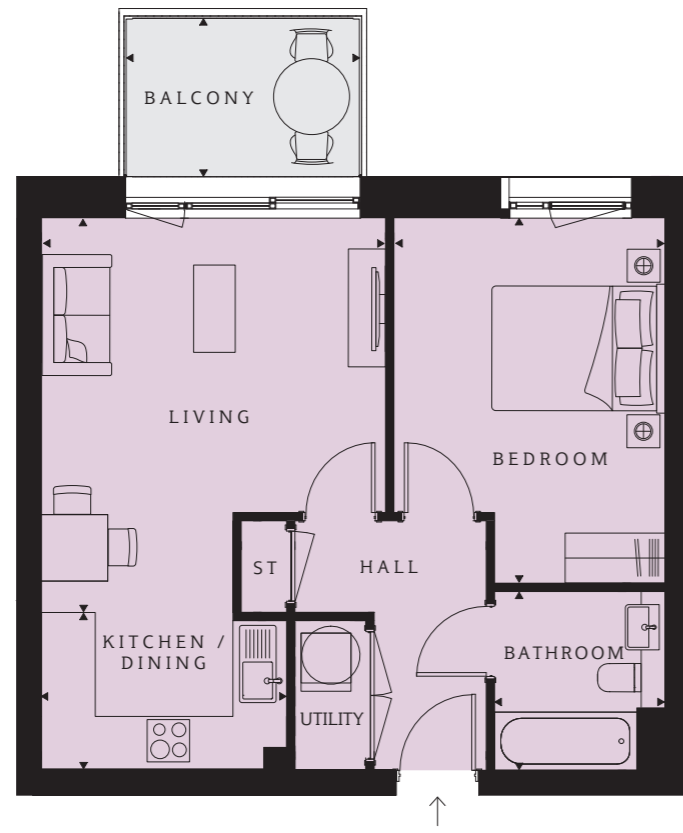
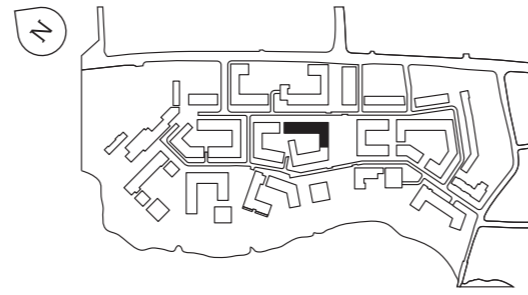
TOTAL AREA
538 sq ft (50 sq m)

Balcony
9'4" x 6'4" (2858 x 1922mm)

Windows are subject to changes



Eider Apartments 1 bedroom apartment



**PLOT 378 (2), 379 (2), 386 (3),
387 (3), 388 (3), 395 (4), 396 (4),
397 (4), 404 (5), 405 (5), 406 (5)**

Kitchen/Dining
10'2" x 9'8" (3100 x 2950mm)

Living
13'7" x 11'7" (4140 x 3540mm)

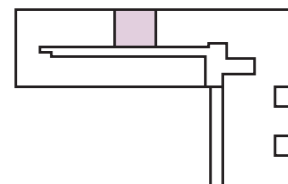
Bedroom
14'5" x 10'8" (4390 x 3260mm)

Bathroom
7'0" x 6'8" (2150 x 2050mm)

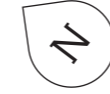
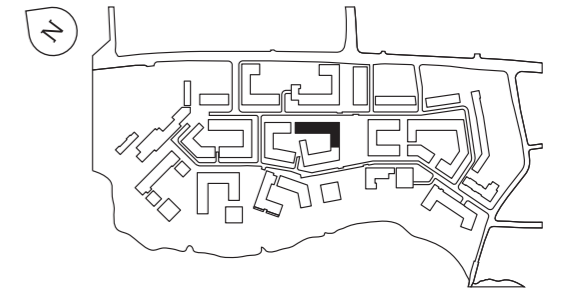
TOTAL AREA
538 sq ft (50 sq m)

Balcony
9'4" x 6'4" (2858 x 1922mm)

Windows are subject to changes



Eider Apartments 1 bedroom apartment



**PLOT 383 (2), 392 (3), 401 (4),
410 (5)**

Kitchen/Dining
10'9" x 7'4" (3282 x 2249mm)

Living
18'0" x 10'1" (5500 x 3075mm)

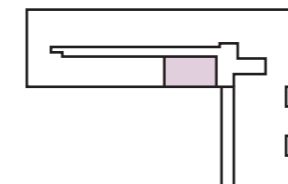
Bedroom
12'11" x 10'1" (3950 x 3075mm)

Bathroom
7'0" x 6'8" (2150 x 2050mm)

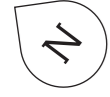
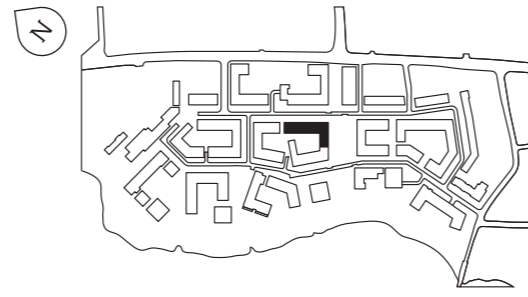
TOTAL AREA
549 sq ft (51 sq m)

Balcony
10'8" x 6'2" (3240 x 1879mm)

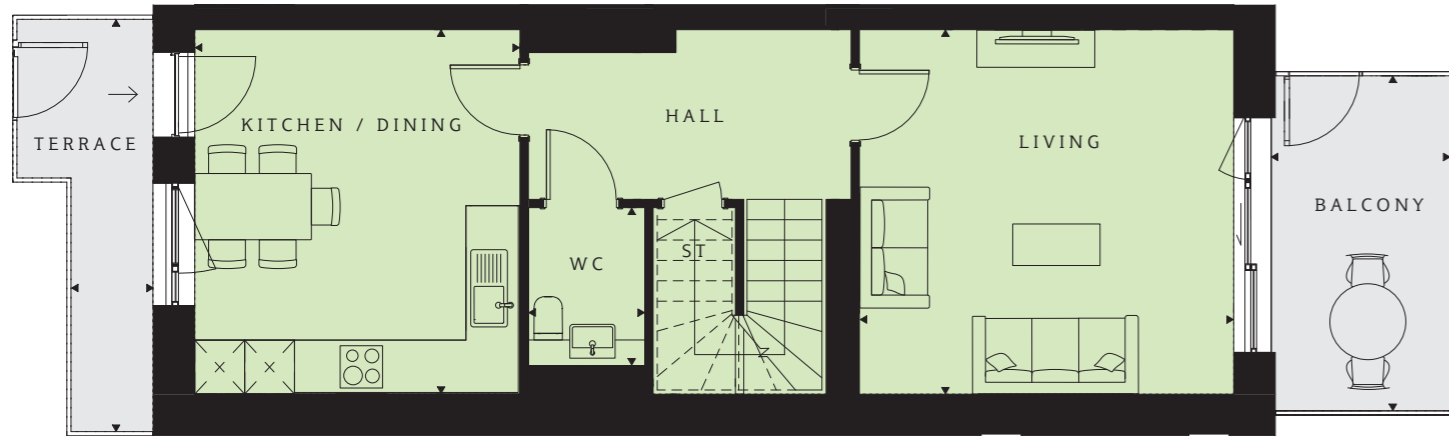
Windows are subject to changes



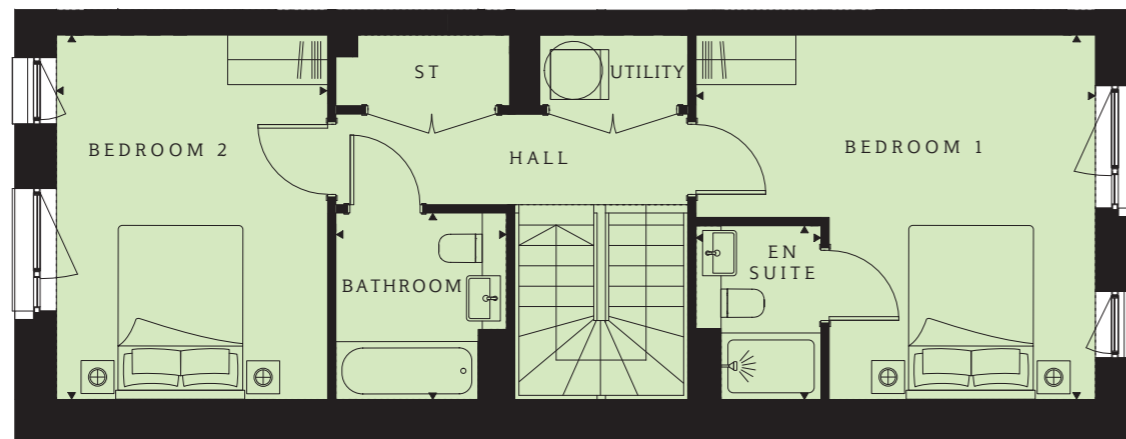
Eider Apartments 2 bedroom apartment



Level 0



Level 1



PLOT 359 (0 & 1)

Kitchen/Dining
14'4" x 12'10" (4383 x 3910mm)

Living
14'9" x 14'4" (4500 x 4383mm)

WC
6'3" x 4'7" (1900 x 1400mm)

Bedroom 1
15'9" x 14'4" (4800 x 4383mm)

En suite
6'10" x 4'11" (2090 x 1500mm)

Bedroom 2
14'4" x 10'8" (4383 x 3260mm)

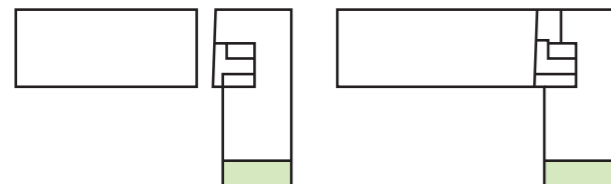
Bathroom
7'4" x 6'8" (2243 x 2050mm)

TOTAL AREA
1173 sq ft (109 sq m)

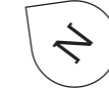
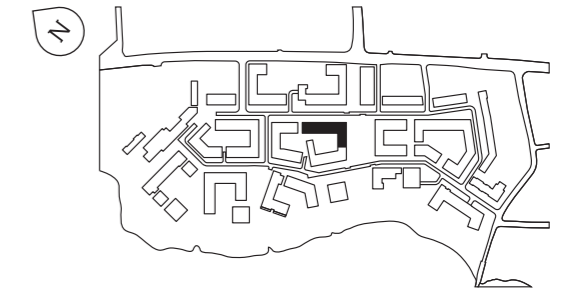
Terrace
15'3" x 3'3" (4635 x 985mm)

Balcony
11'2" x 7'1" (3400 x 2160mm)

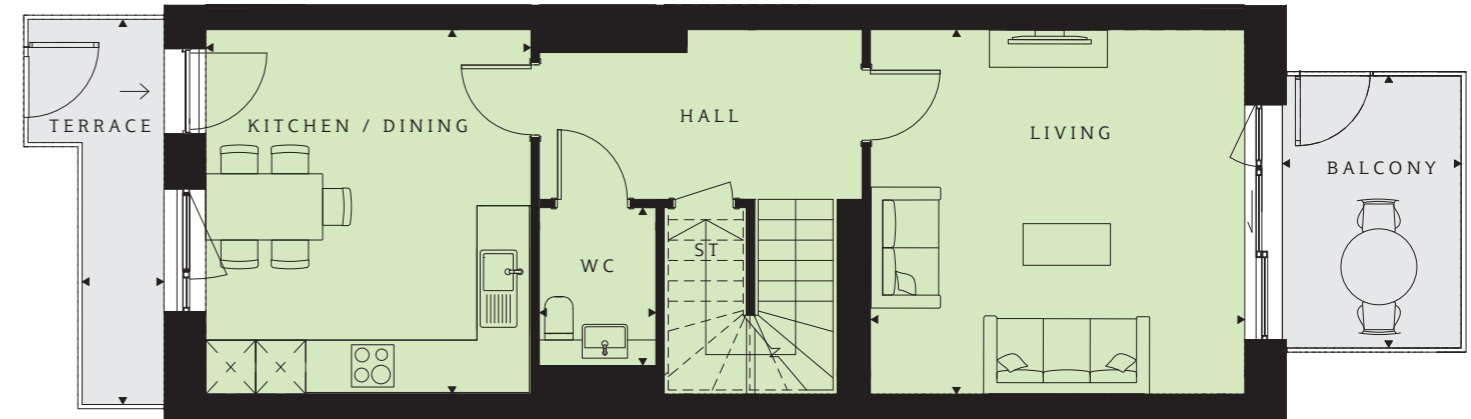
Windows are subject to changes



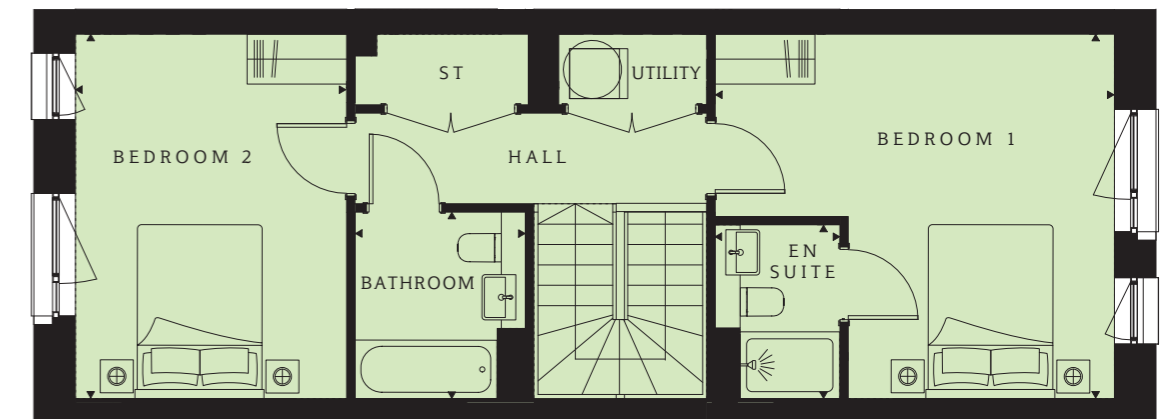
Eider Apartments 2 bedroom apartment



Level 0



Level 1



PLOT 360 (0 & 1)

Kitchen/Dining
14'4" x 12'10" (4383 x 3910mm)

Living
14'9" x 14'4" (4500 x 4383mm)

WC
6'3" x 4'7" (1900 x 1400mm)

Bedroom 1
15'9" x 14'4" (4800 x 4383mm)

En suite
6'10" x 4'11" (2090 x 1500mm)

Bedroom 2
14'4" x 10'8" (4383 x 3260mm)

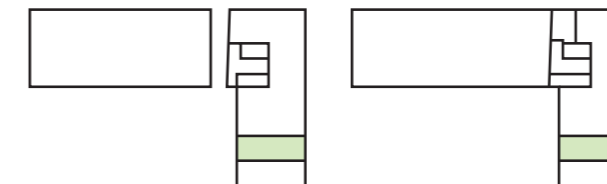
Bathroom
7'4" x 6'8" (2243 x 2050mm)

TOTAL AREA
1173 sq ft (109 sq m)

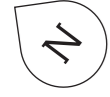
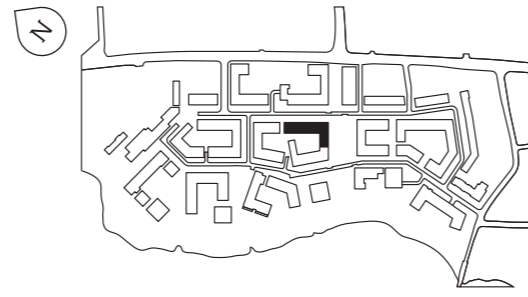
Terrace
15'2" x 3'3" (4635 x 985mm)

Balcony
11'2" x 7'1" (3400 x 2160mm)

Windows are subject to changes



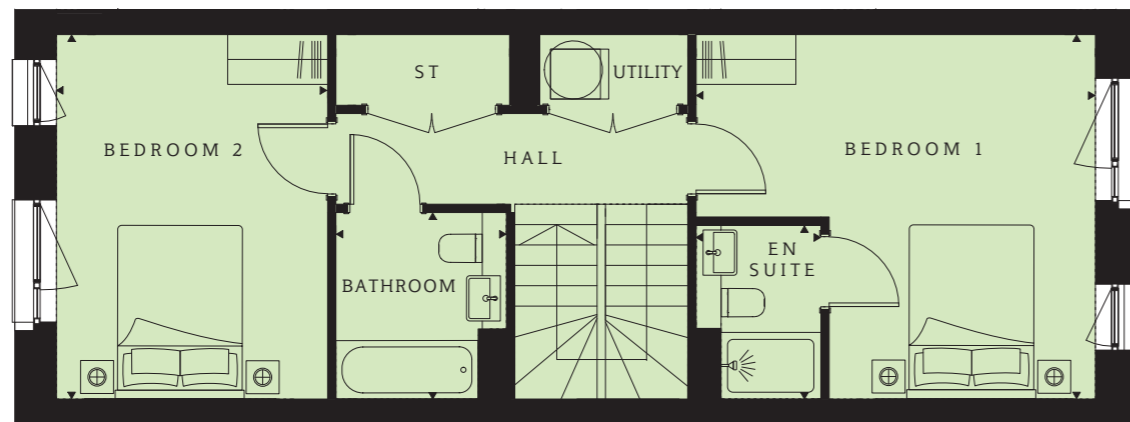
Eider Apartments 2 bedroom apartment



Level 0



Level 1



PLOT 361 (0 & 1)

Kitchen/Dining
14'4" x 12'10" (4383 x 3910mm)

Living
14'9" x 14'4" (4500 x 4383mm)

WC
6'3" x 4'7" (1900 x 1400mm)

Bedroom 1
15'9" x 14'4" (4800 x 4383mm)

En suite
6'10" x 4'11" (2090 x 1500mm)

Bedroom 2
14'4" x 10'8" (4383 x 3260mm)

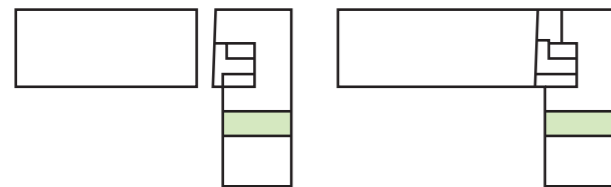
Bathroom
7'4" x 6'8" (2243 x 2050mm)

TOTAL AREA
1173 sq ft (109 sq m)

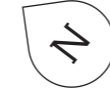
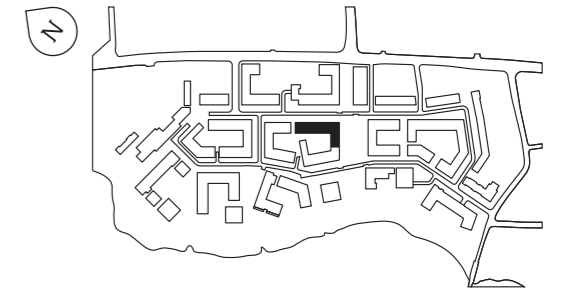
Terrace
15'2" x 3'3" (4635 x 985mm)

Balcony
11'2" x 7'1" (3400 x 2160mm)

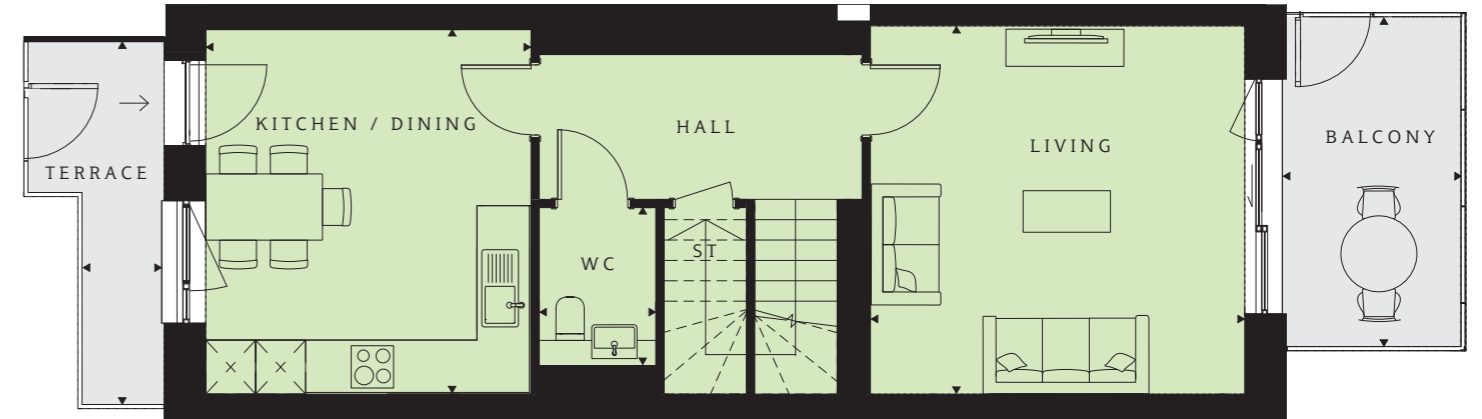
Windows are subject to changes



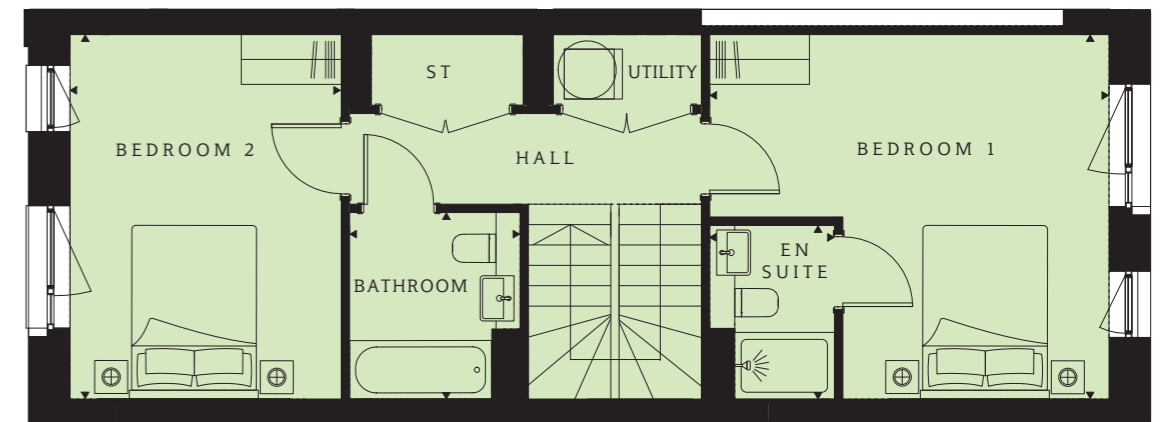
Eider Apartments 2 bedroom apartment



Level 0



Level 1



PLOT 362 (0 & 1)

Kitchen/Dining
14'4" x 12'10" (4383 x 3910mm)

Living
14'9" x 14'6" (4500 x 4383mm)

WC
6'3" x 4'7" (1900 x 1400mm)

Bedroom 1
15'9" x 14'4" (4800 x 4383mm)

En suite
6'10" x 4'11" (2090 x 1500mm)

Bedroom 2
14'4" x 10'8" (4383 x 3260mm)

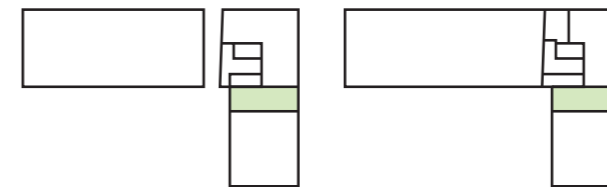
Bathroom
7'4" x 6'8" (2243 x 2050mm)

TOTAL AREA
1173 sq ft (109 sq m)

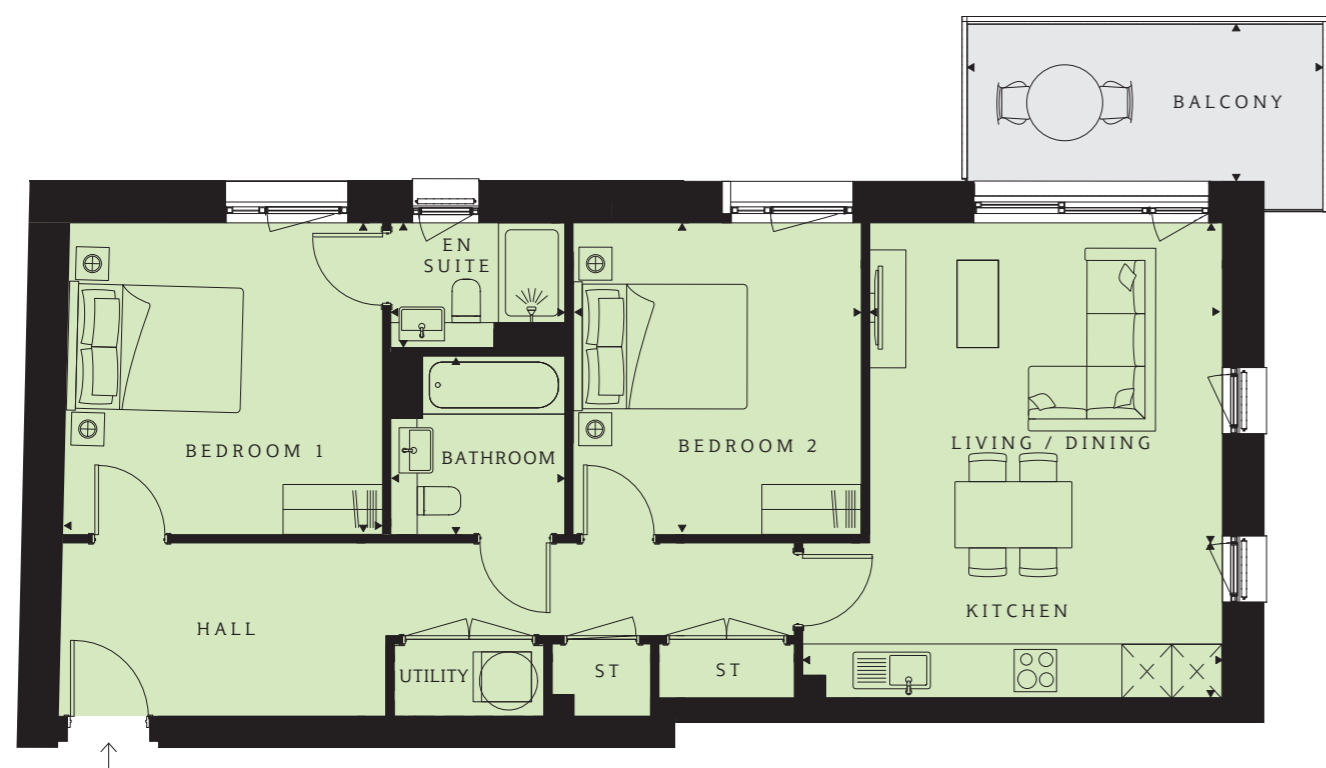
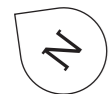
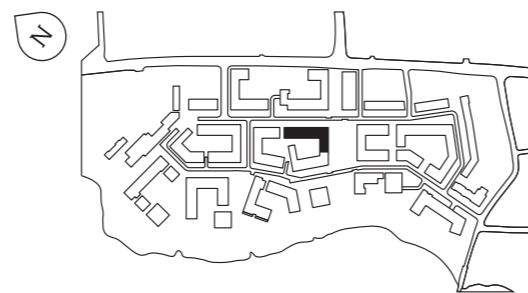
Terrace
15'2" x 3'3" (4635 x 985mm)

Balcony
11'2" x 7'11" (3400 x 2160mm)

Windows are subject to changes



Eider Apartments 2 bedroom apartment



PLOT 372 (1)

Kitchen
16'6" x 6'3" (5047 x 1915mm)

Living/Dining
13'11" x 12'5" (4241 x 3800mm)

Bedroom 1
12'6" x 12'3" (3810 x 3750mm)

En suite
6'10" x 4'11" (2090 x 1500mm)

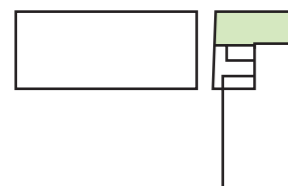
Bedroom 2
12'3" x 11'4" (3750 x 3465mm)

Bathroom
7'0" x 6'10" (2150 x 2090mm)

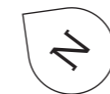
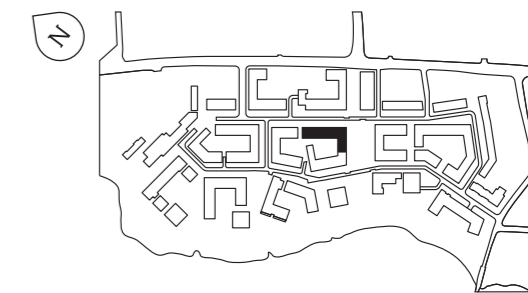
TOTAL AREA
872 sq ft (81 sq m)

Balcony
14'0" x 6'4" (4277 x 1922mm)

Windows are subject to changes



Eider Apartments 2 bedroom apartment



PLOT 376 (2)

Kitchen/Dining
9'4" x 9'4" (2857 x 2855mm)

Living
15'3" x 12'5" (4660 x 3875mm)

Bedroom 1
12'5" x 10'9" (3785 x 3290mm)

Bedroom 2
12'5" x 7'4" (3785 x 2250mm)

Bathroom
7'0" x 6'8" (2150 x 2050mm)

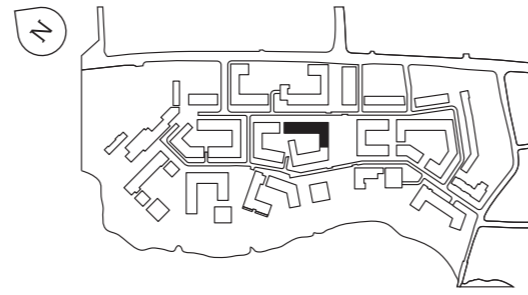
TOTAL AREA
678 sq ft (63 sq m)

Balcony
12'5" x 6'4" (3780 x 1932mm)

Windows are subject to changes



Eider Apartments 2 bedroom apartment



**PLOT 380 (2), 389 (3),
398 (4), 407 (5)**

Living
15'0" x 11'9" (4590 x 3599mm)

Kitchen/Dining
11'9" x 6'8" (3599 x 2050mm)

Bedroom 1
12'2" x 10'10" (3713 x 3300mm)

En suite
6'10" x 4'11" (2090 x 1500mm)

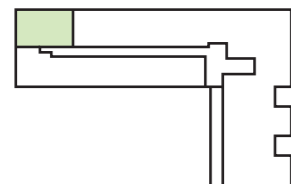
Bedroom 2
10'10" x 9'9" (3300 x 2977mm)

Bathroom
7'0" x 6'8" (2150 x 2050mm)

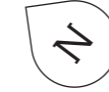
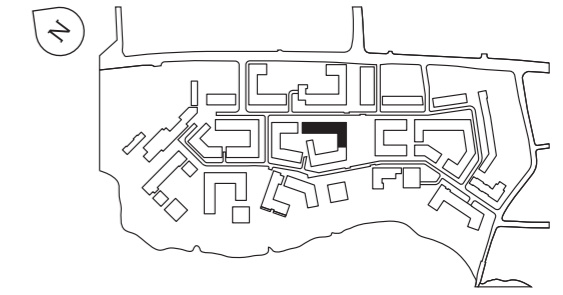
TOTAL AREA
742 sq ft (69 sq m)

Balcony
12'5" x 6'4" (3780 x 1932mm)

Windows are subject to changes



Eider Apartments 2 bedroom apartment



**PLOT 381 (2), 390 (3), 399 (4),
408 (5)**

Kitchen/Dining
12'8" x 10'4" (3860 x 3150mm)

Living
13'0" x 12'8" (3975 x 3860mm)

Bedroom 1
11'9" x 11'0" (3575 x 3353mm)

En suite
6'10" x 5'5" (2090 x 1650mm)

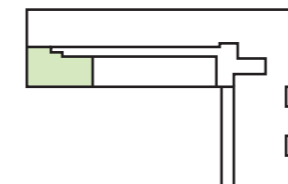
Bedroom 2
15'1" x 9'1" (4596 x 2768mm)

Bathroom
7'0" x 6'8" (2150 x 2050mm)

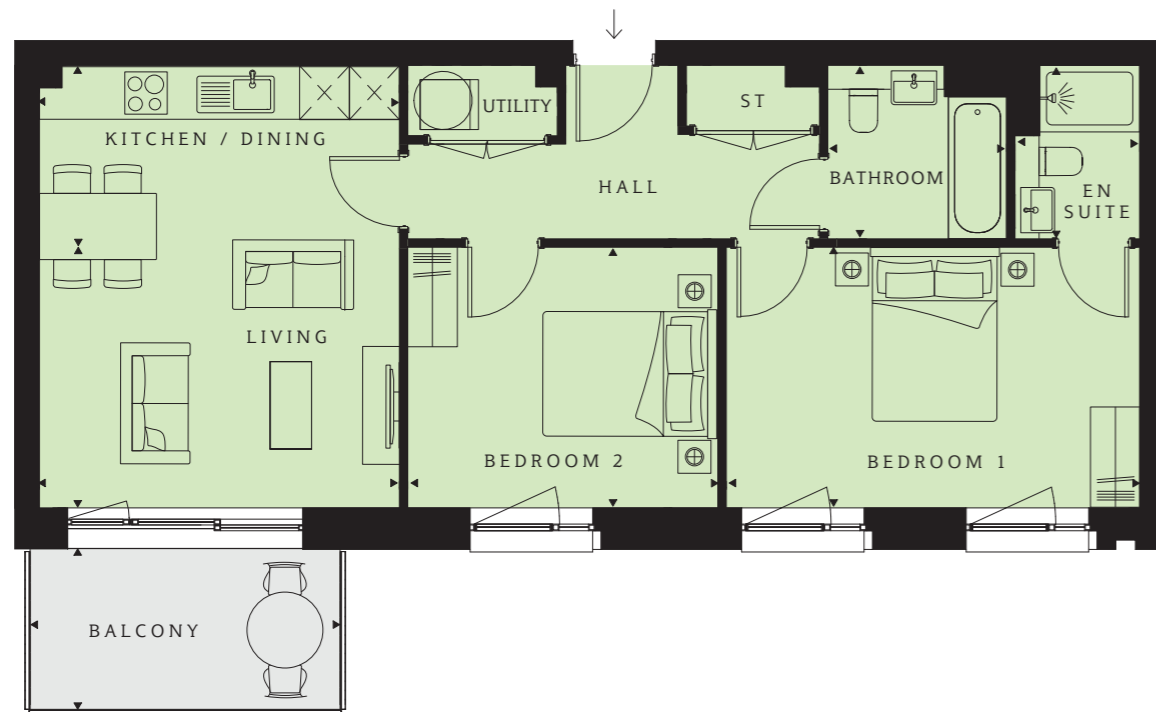
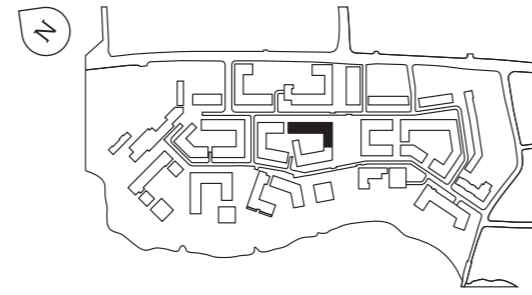
TOTAL AREA
785 sq ft (73 sq m)

Balcony
14'3" x 6'7" (4340 x 1865mm)

Windows are subject to changes



Eider Apartments 2 bedroom apartment



**PLOT 382 (2), 391 (3), 400 (4),
409 (5)**

Living
14'2" x 11'5" (4330 x 3474mm)

Kitchen/Dining
14'2" x 6'1" (4330 x 1850mm)

Bedroom 1
16'3" x 10'3" (4971 x 3135mm)

En Suite
6'10" x 4'11" (2090 x 1500mm)

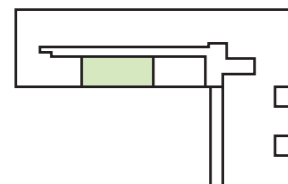
Bedroom 2
12'3" x 10'3" (3729 x 3135mm)

Bathroom
7'0" x 6'10" (2150 x 2090mm)

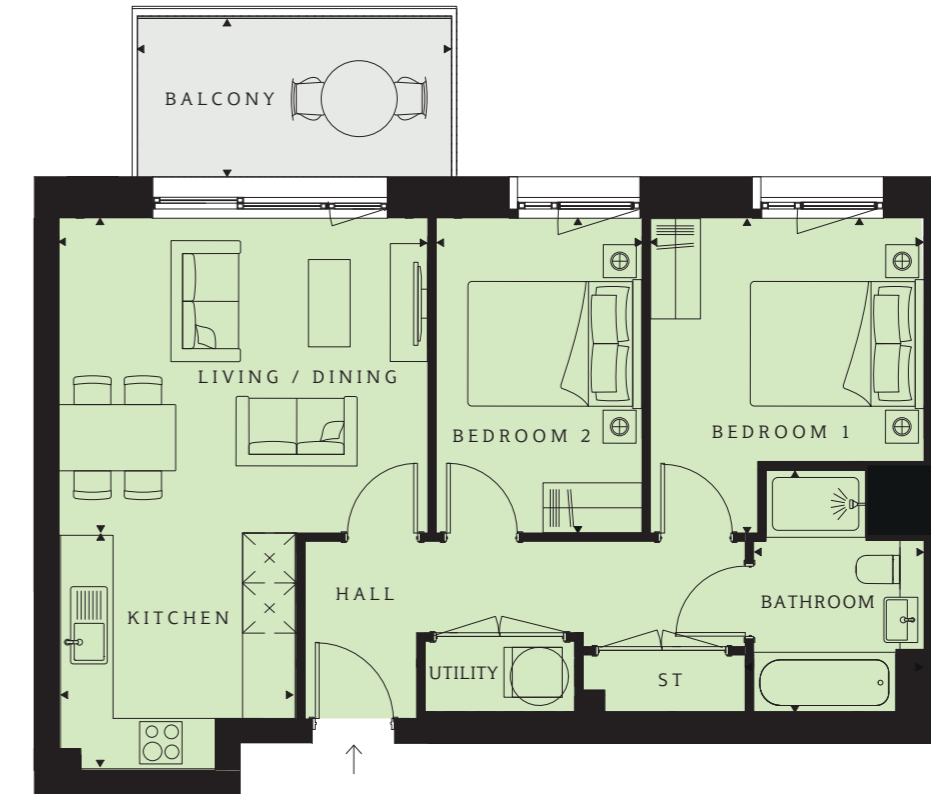
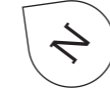
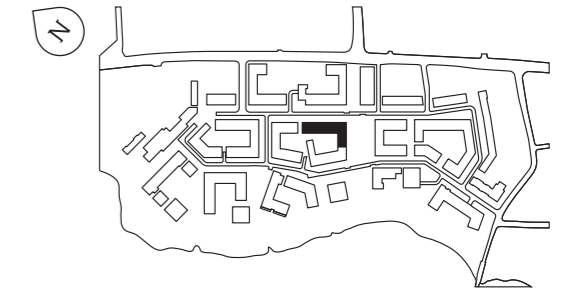
TOTAL AREA
753 sq ft (70 sq m)

Balcony
12'4" x 6'4" (3750 x 1923mm)

Windows are subject to changes



Eider Apartments 2 bedroom apartment



PLOT 385 (3), 394 (4), 403 (5)

Living/Dining
14'6" x 12'5" (4435 x 3785mm)

Kitchen
9'4" x 9'4" (2857 x 2855mm)

Bedroom 1
12'5" x 10'9" (3785 x 3290mm)

Bedroom 2
12'5" x 8'11" (3785 x 2475mm)

Bathroom
9'6" x 6'8" (2910 x 2050mm)

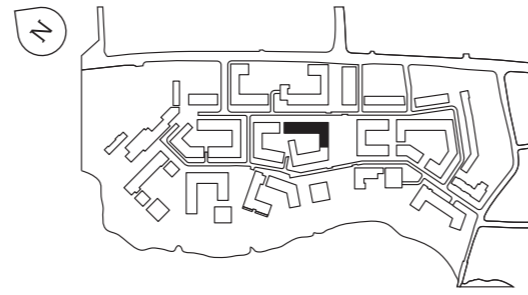
TOTAL AREA
678 sq ft (63 sq m)

Balcony
12'5" x 6'4" (3780 x 1932mm)

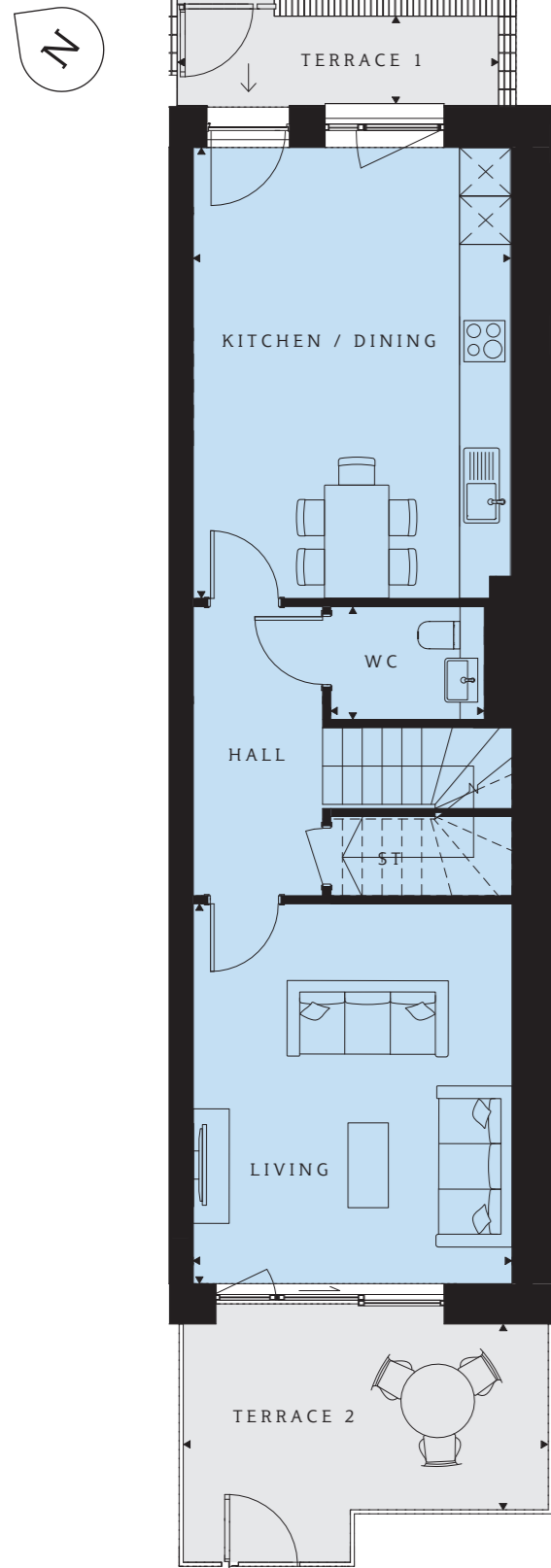
Windows are subject to changes



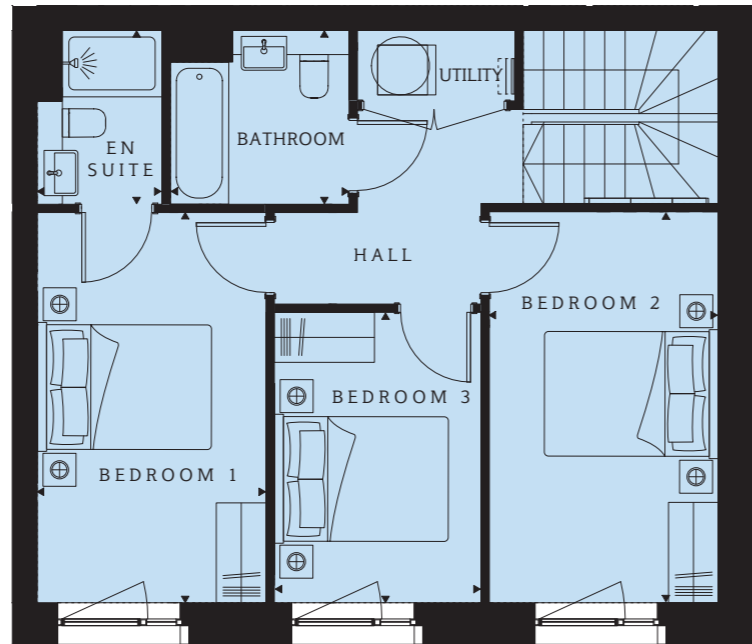
Eider Apartments 3 bedroom apartment



Level 0

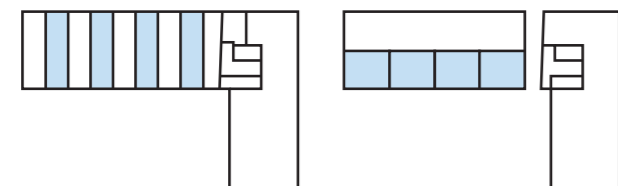


Level 1

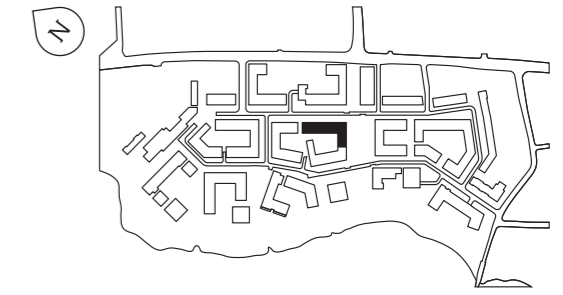


PLOT 363 (0 & 1), 365 (0 & 1), 367 (0 & 1), 369 (0 & 1)	Bedroom 2 15'5" x 9'0" (4702 x 2750mm)
Kitchen/Dining 18'4" x 12'11" (5583 x 3943mm)	Bedroom 3 11'5" x 8'2" (3492 x 2484mm)
Living 15'5" x 12'11" (4702 x 3943mm)	Bathroom 7'0" x 6'10" (2150 x 2090mm)
WC 6'3" x 4'7" (1900 x 1400mm)	TOTAL AREA 1206 sq ft (112 sq m)
Bedroom 1 15'4" x 9'0" (4962 x 2751mm)	Terrace 1 13'1" x 3'8" (4000 x 1115mm)
En suite 6'10" x 4'11" (2090 x 1500mm)	Terrace 2 13'9" x 7'6" (4192 x 2300mm)

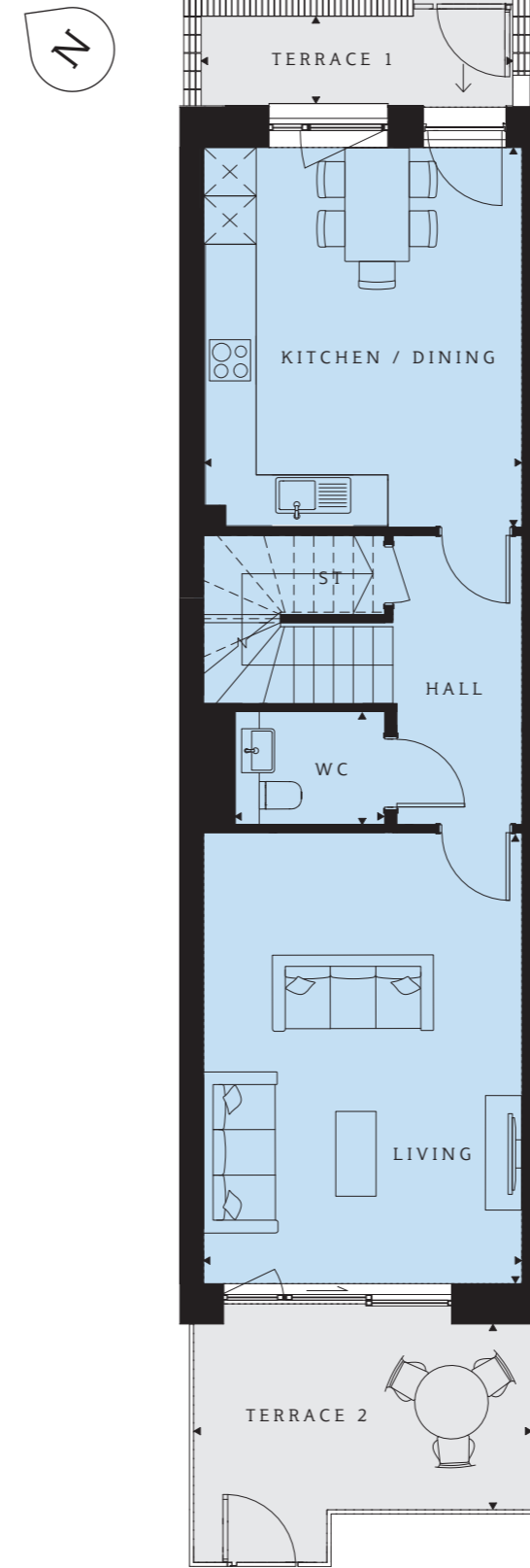
Windows are subject to changes



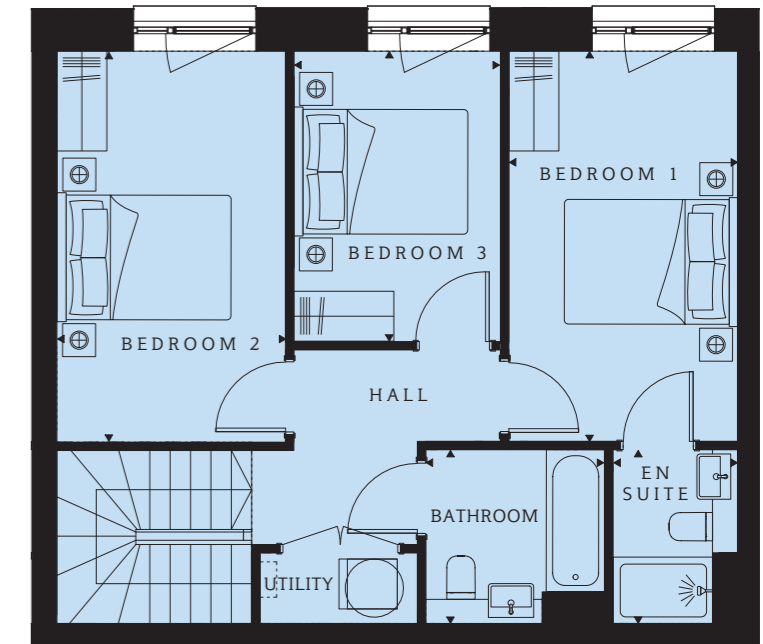
Eider Apartments 3 bedroom apartment



Level 0

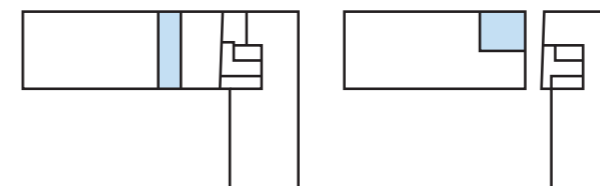


Level 1

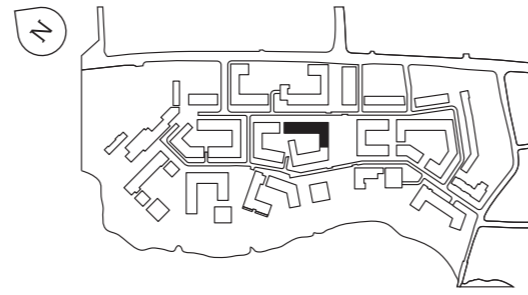


PLOT 364 (0 & 1)	Kitchen/Dining 15'5" x 12'11" (4703 x 3943mm)
Living 18'4" x 12'11" (5582 x 3943mm)	Bedroom 3 11'5" x 8'2" (3493 x 2484mm)
WC 6'3" x 4'7" (1900 x 1400mm)	Bathroom 7'0" x 6'10" (2150 x 2090mm)
Bedroom 1 15'5" x 9'0" (4693 x 2751mm)	TOTAL AREA 1206 sq ft (112 sq m)
En suite 6'10" x 4'11" (2090 x 1500mm)	Terrace 1 13'2" x 3'8" (4000 x 1115mm)
Bedroom 2 15'5" x 9'0" (4703 x 2750mm)	Terrace 2 13'9" x 7'7" (4192 x 2300mm)

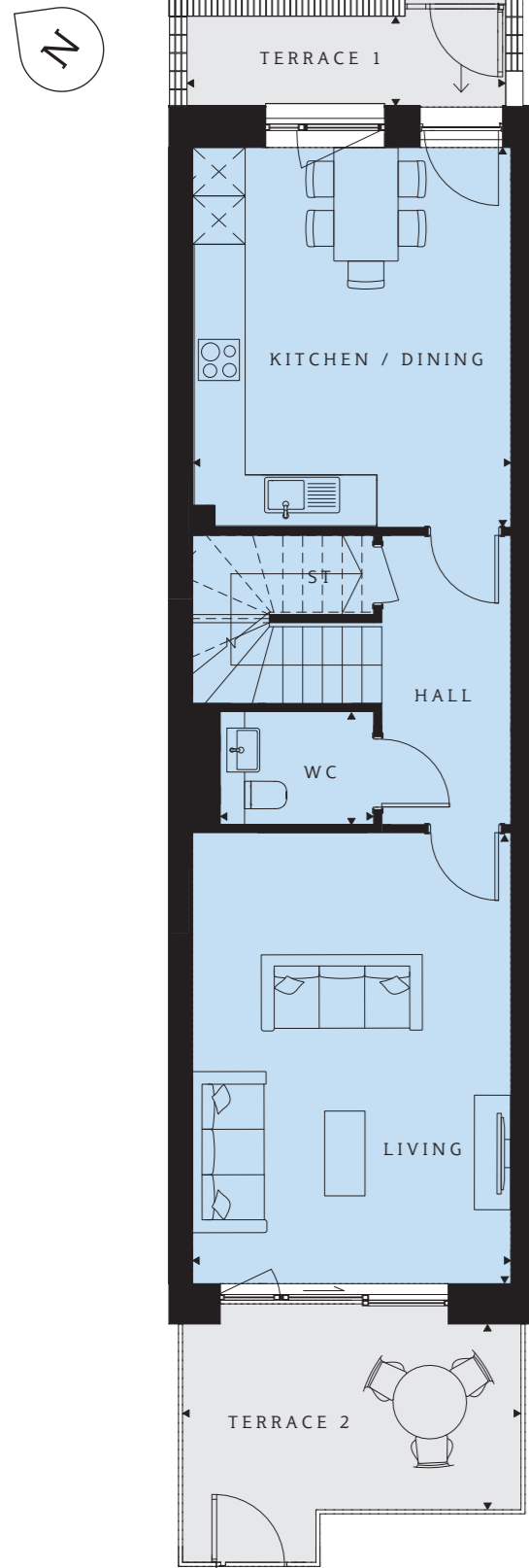
Windows are subject to changes



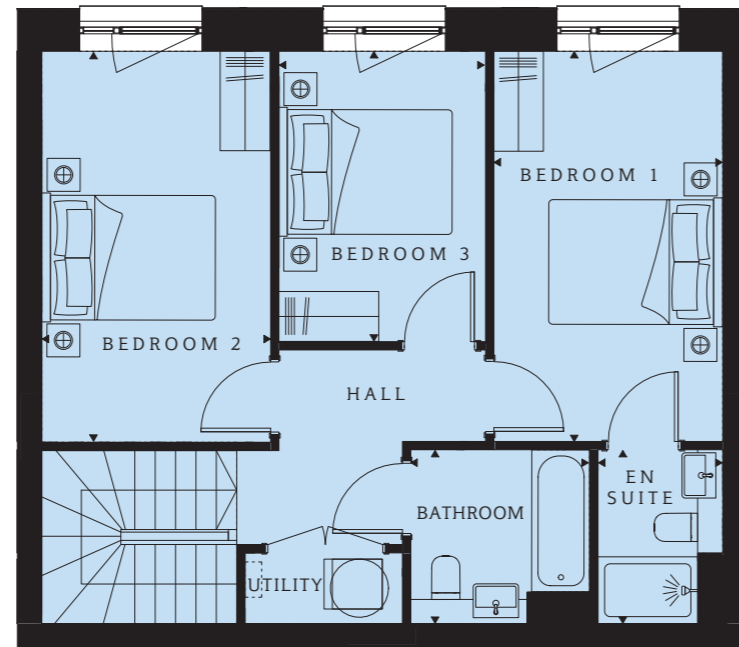
Eider Apartments 3 bedroom apartment



Level 0



Level 1



PLOT 366 (0 & 1), 368 (0 & 1)

Kitchen/Dining
15'5" x 12'11" (4703 x 3943mm)

Living
18'4" x 12'11" (5582 x 3943mm)

WC
6'3" x 4'7" (1900 x 1400mm)

Bedroom 1
15'5" x 9'0" (4693 x 2751mm)

En suite
6'10" x 4'11" (2090 x 1500mm)

Bedroom 2
15'5" x 9'0" (4703 x 2750mm)

Bedroom 3
11'5" x 8'2" (3493 x 2484mm)

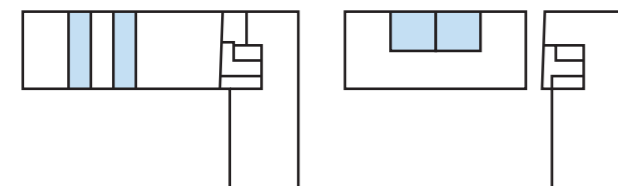
Bathroom
7'0" x 6'10" (2150 x 2090mm)

TOTAL AREA
1206 sq ft (112 sq m)

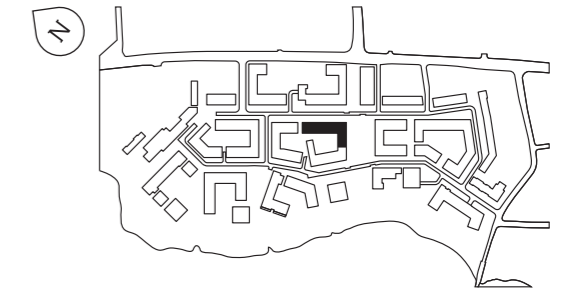
Terrace 1
13'2" x 3'8" (4000 x 1115mm)

Terrace 2
13'9" x 7'7" (4192 x 2300mm)

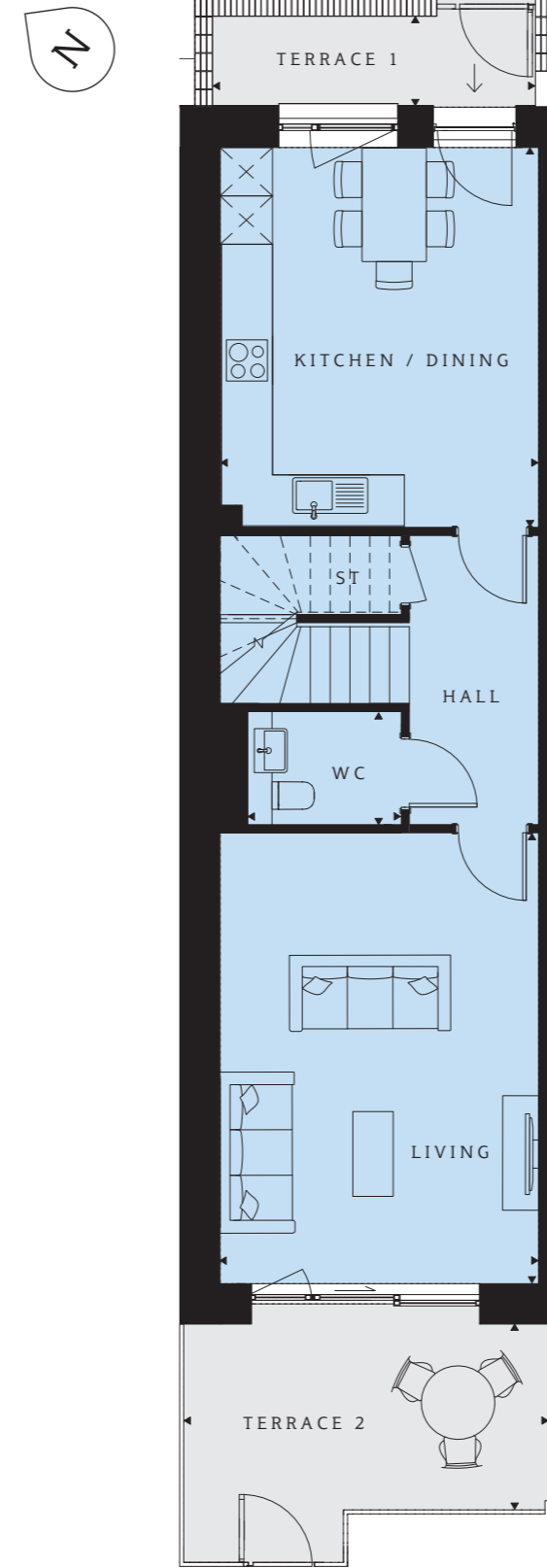
Windows are subject to changes



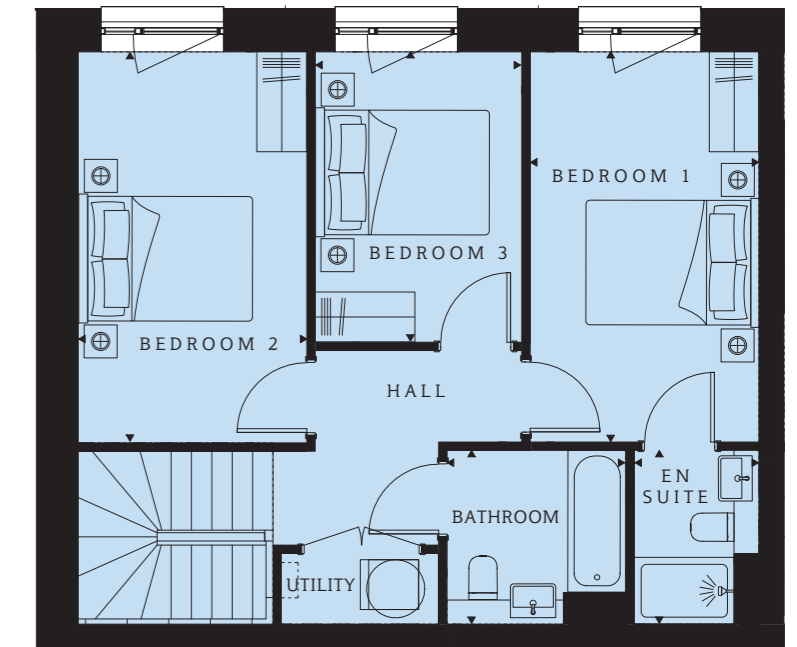
Eider Apartments 3 bedroom apartment



Level 0



Level 1



PLOT 370 (0 & 1)

Kitchen/Dining
15'5" x 12'11" (4703 x 3943mm)

Living
18'4" x 12'11" (5582 x 3943mm)

WC
6'3" x 4'7" (1900 x 1400mm)

Bedroom 1
15'5" x 9'0" (4693 x 2751mm)

En suite
6'10" x 4'11" (2090 x 1500mm)

Bedroom 2
15'5" x 9'0" (4703 x 2750mm)

Bedroom 3
11'5" x 8'2" (3493 x 2484mm)

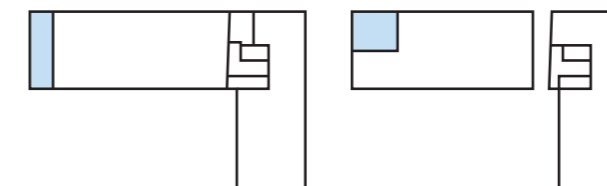
Bathroom
7'0" x 6'10" (2150 x 2090mm)

TOTAL AREA
1206 sq ft (112 sq m)

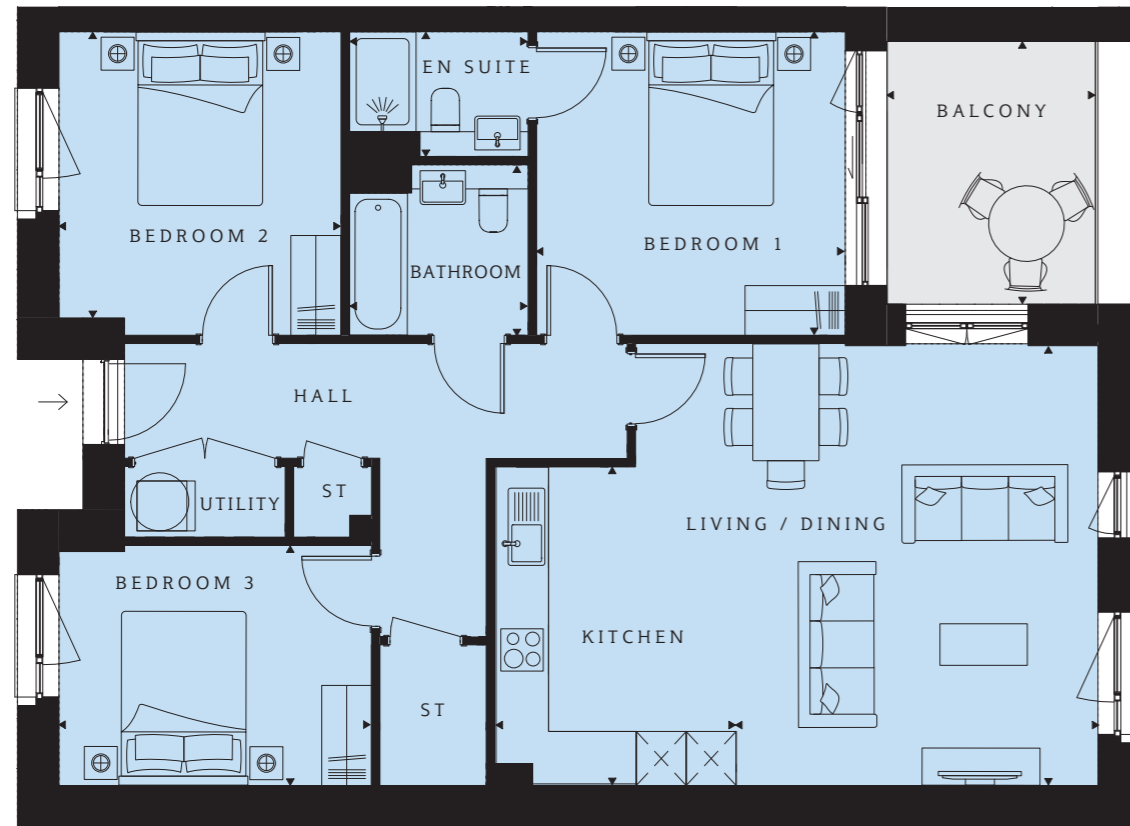
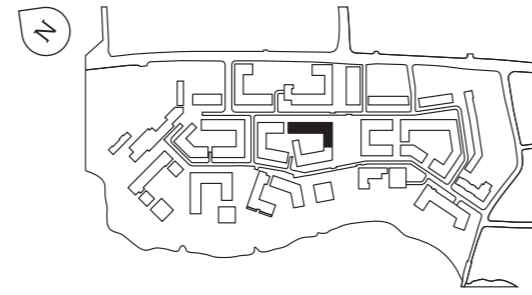
Terrace 1
13'2" x 3'8" (4000 x 1115mm)

Terrace 2
13'9" x 7'7" (4192 x 2300mm)

Windows are subject to changes



Eider Apartments 3 bedroom apartment



PLOT 373 (2), 374 (2)

Kitchen
12'7" x 8'0" (3832 x 2450mm)

Living/Dining
18'3" x 17'4" (5560 x 5290mm)

Bedroom 1
12'2" x 11'11" (3712 x 3650mm)

En suite
7'0" x 4'11" (2150 x 1500mm)

Bedroom 2
11'11" x 11'1" (3650 x 3390mm)

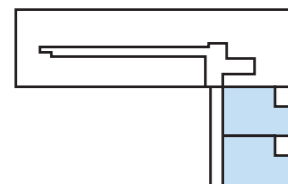
Bedroom 3
12'4" x 9'5" (3756 x 2887mm)

Bathroom
7'0" x 6'8" (2150 x 2050mm)

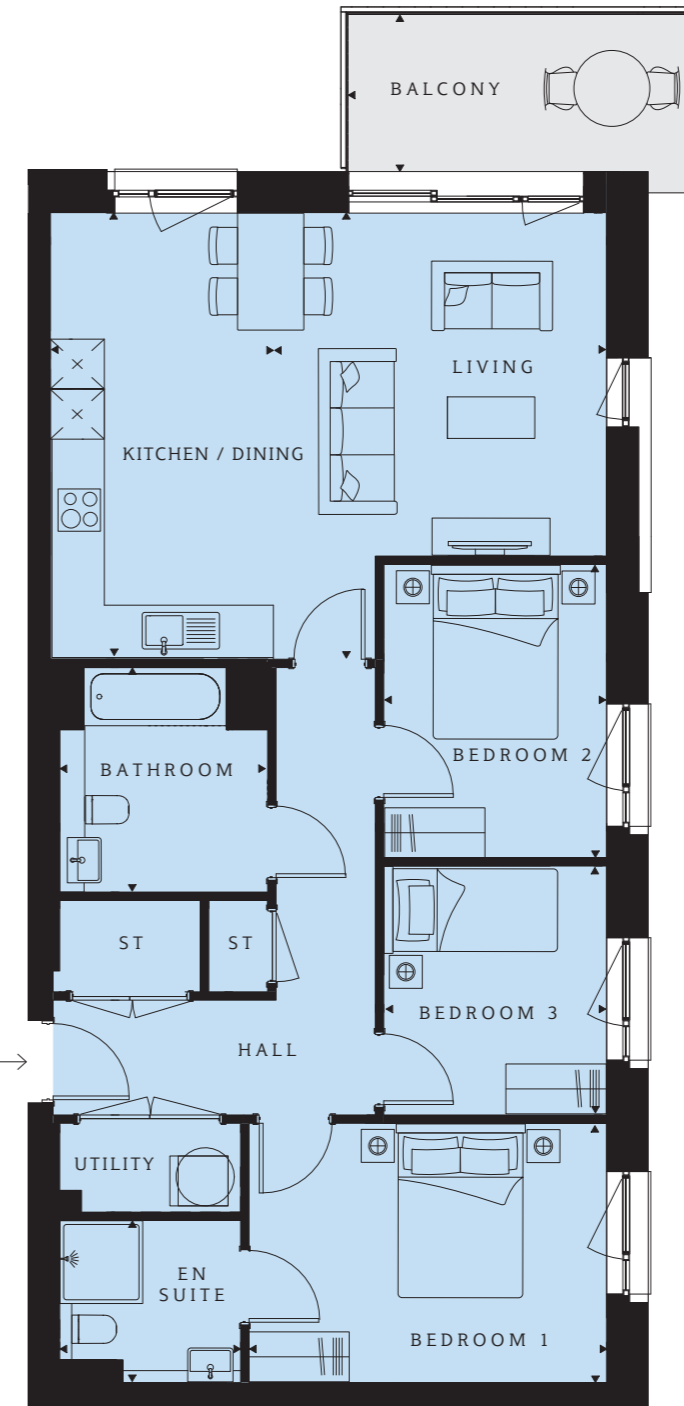
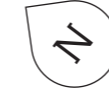
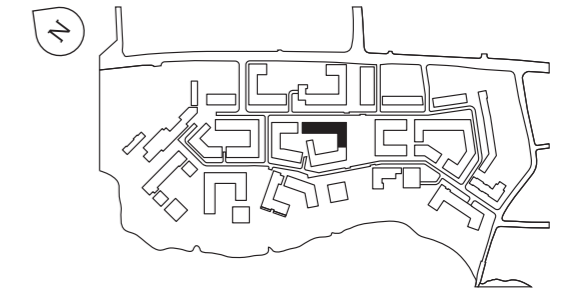
TOTAL AREA
1066 sq ft (99 sq m)

Balcony
10'4" x 8'4" (3160 x 2535mm)

Windows are subject to changes



Eider Apartments 3 bedroom apartment



PLOT 375 (2)

Living
17'7" x 13'4" (5365 x 4074mm)

Kitchen/Dining
17'7" x 8'7" (5365 x 2614mm)

Bedroom 1
14'1" x 10'3" (4301 x 3119mm)

En suite
7'1" x 6'5" (2175 x 1950mm)

Bedroom 2
11'7" x 8'9" (3528 x 2680mm)

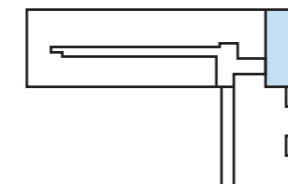
Bedroom 3
9'10" x 8'9" (2994 x 2680mm)

Bathroom
8'10" x 8'2" (2700 x 2500mm)

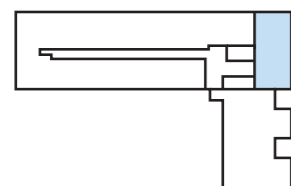
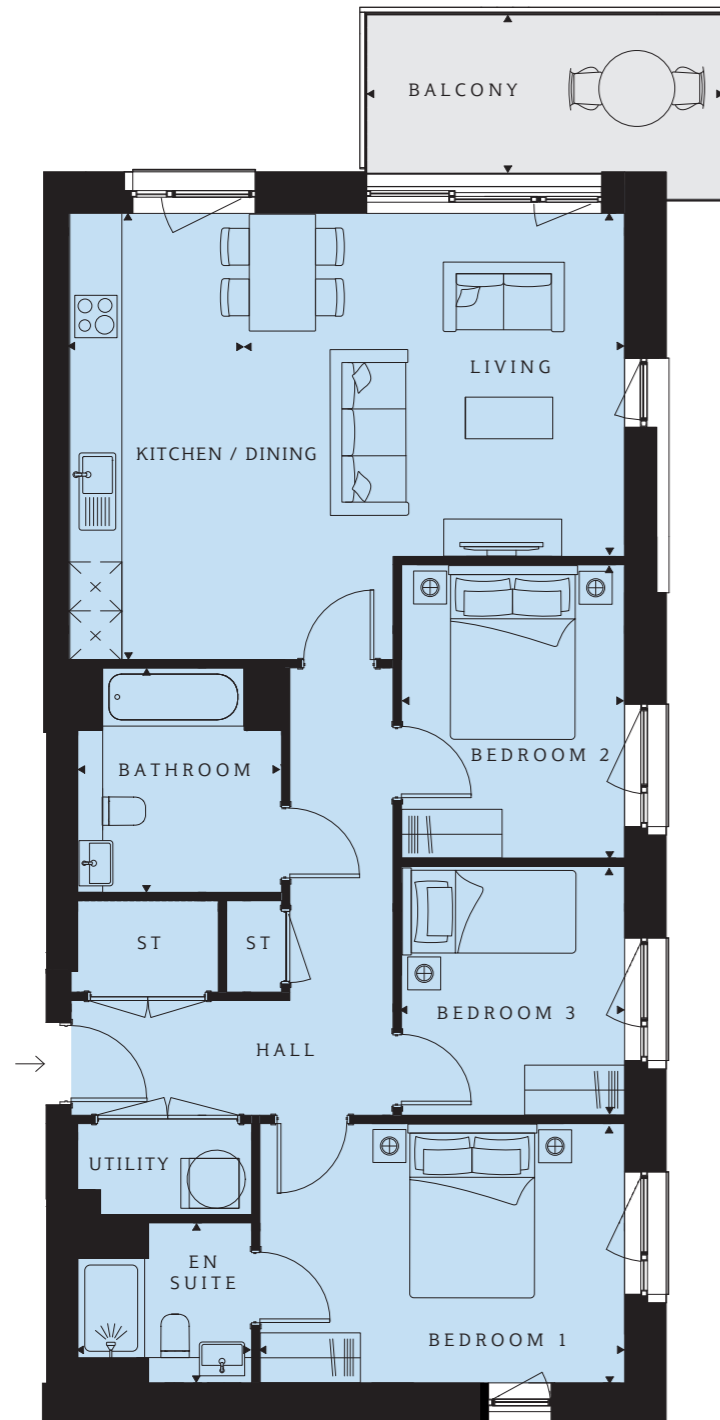
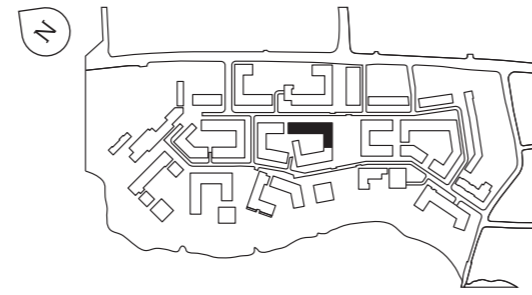
TOTAL AREA
1001 sq ft (93 sq m)

Balcony
14'0" x 6'4" (4276 x 1932mm)

Windows are subject to changes



Eider Apartments 3 bedroom apartment



PLOT 384 (3), 393 (4), 402 (5)

Kitchen/Dining
17'7" x 6'5" (5365 x 1953mm)

Living
17'7" x 15'6" (5365 x 4375mm)

Bedroom 1
14'4" x 10'3" (4384 x 3119mm)

En suite
6'10" x 6'4" (2090 x 1925mm)

Bedroom 2
11'7" x 8'9" (3528 x 2683mm)

Bedroom 3
9'10" x 8'9" (2994 x 2683mm)

Bathroom
8'10" x 8'0" (2700 x 2450mm)

TOTAL AREA
1001 sq ft (93 sq m)

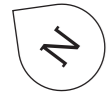
Balcony
14'0" x 6'3" (4276 x 1922mm)

Windows are subject to changes



Hawthorn Apartments Floor plates

One-bedroom apartments
 Two-bedroom apartments
 Three-bedroom apartments



Lower Ground Level



Ground Level



Level 1



Level 2



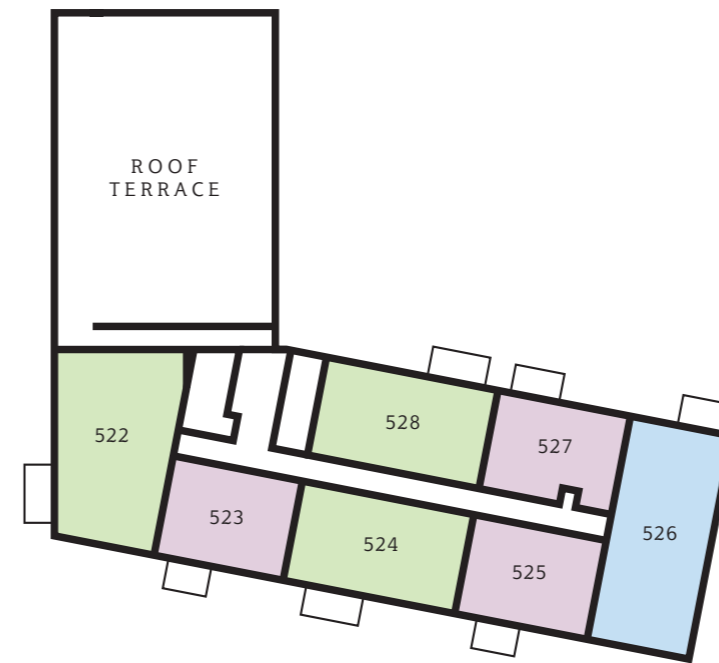
Level 3



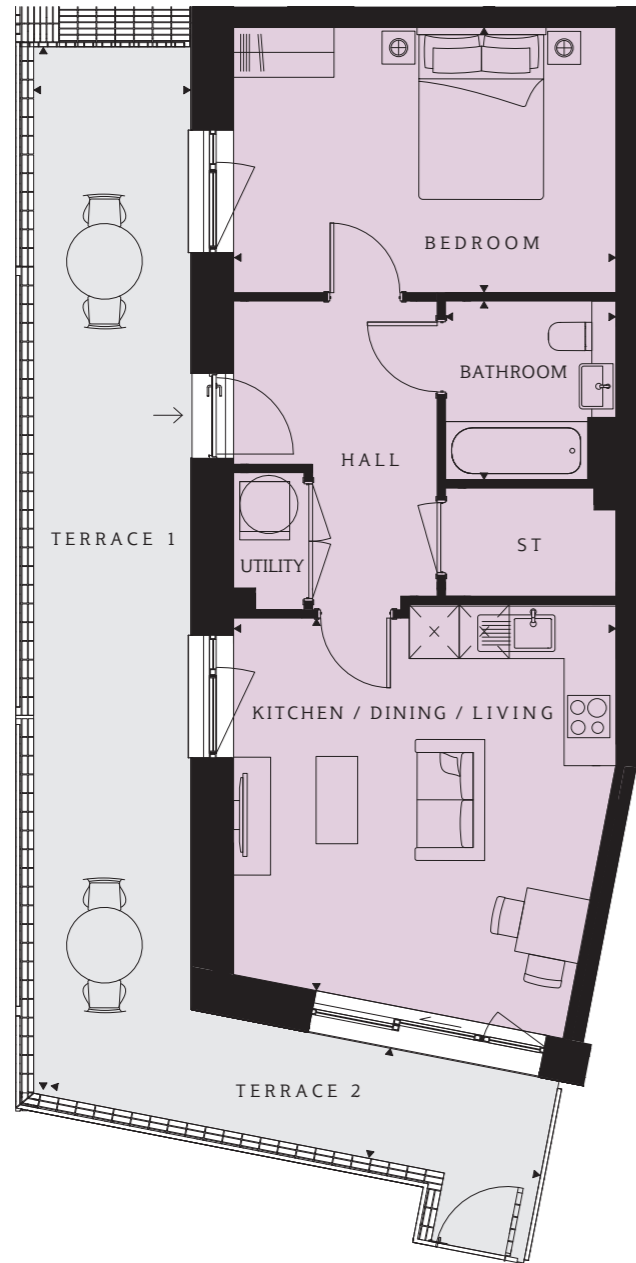
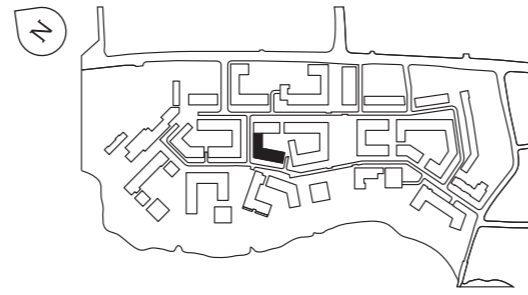
Level 4



Level 5



Hawthorn Apartments 1 bedroom apartment



PLOT 472 (-1)

Living/Kitchen/Dining
15'1" x 14'7" (4597 x 4450mm)

Bedroom
15'1" x 10'5" (4597 x 3190mm)

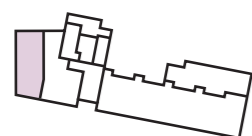
Bathroom
7'0" x 6'8" (2150 x 2050mm)

TOTAL AREA
570 sq ft (53 sq m)

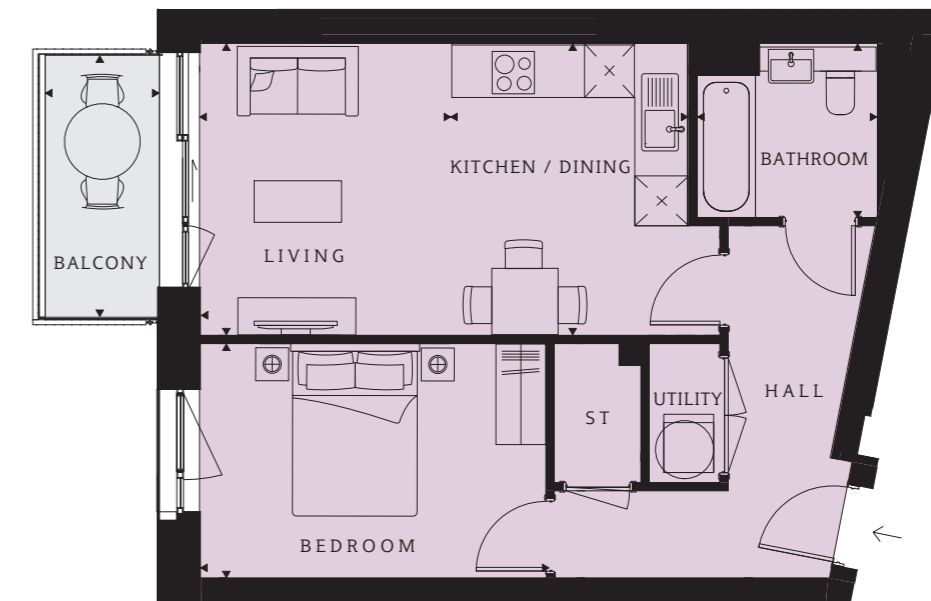
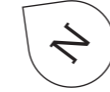
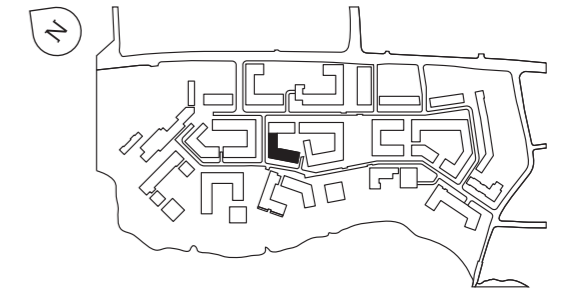
Terrace 1
41'3" x 6'3" (12586 x 1904mm)

Terrace 2
20'1" x 4'3" (6117 x 1360mm)

Windows are subject to changes



Hawthorn Apartments 1 bedroom apartment



PLOT 478 (0)

Kitchen/Dining
11'6" x 10'7" (3511 x 3223mm)

Living
11'6" x 9'10" (3511 x 3015mm)

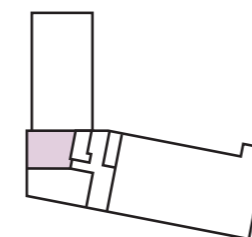
Bedroom
13'8" x 9'3" (4164 x 2817mm)

Bathroom
7'1" x 6'1" (2167 x 2094mm)

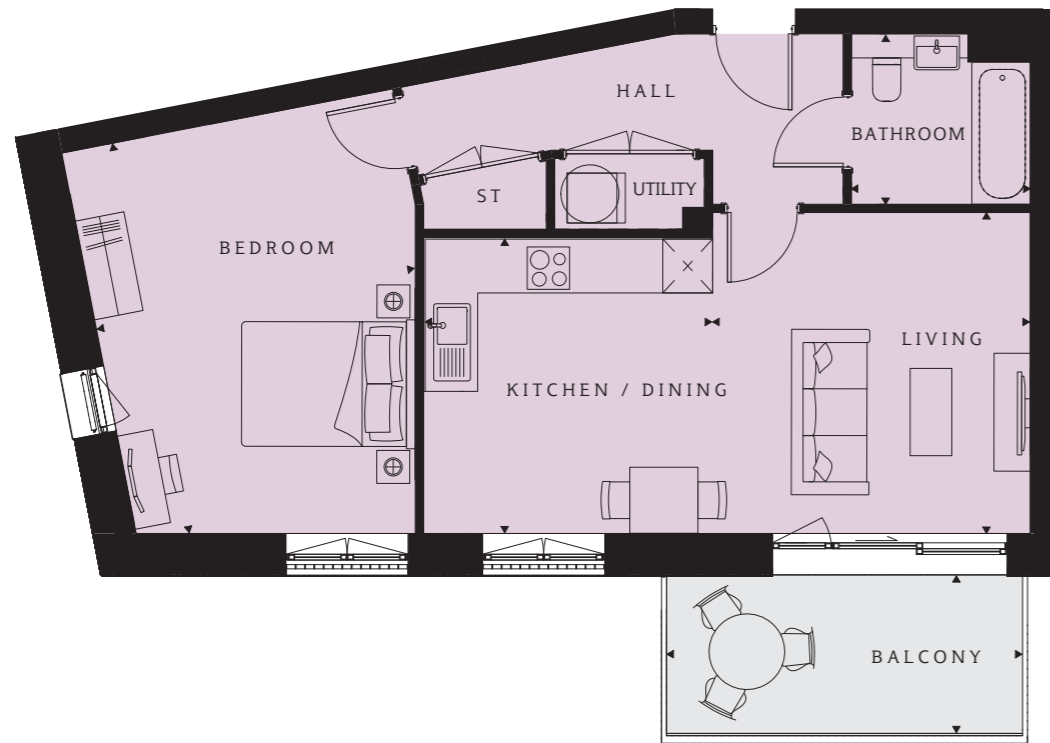
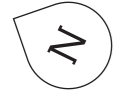
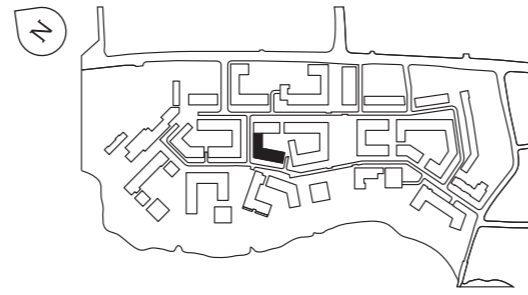
TOTAL AREA
549 sq ft (51 sq m)

Balcony
14'0" x 6'4" (4276 x 1930mm)

Windows are subject to changes



Hawthorn Apartments 1 bedroom apartment



PLOT 479 (0)

Kitchen/Dining
11'8" x 11'5" (3560 x 3475mm)

Living
12'8" x 12'6" (3860 x 3819mm)

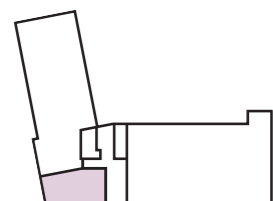
Bedroom
15'3" x 11'0" (4662 x 3354mm)

Bathroom
7'0" x 6'8" (2150 x 2050mm)

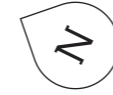
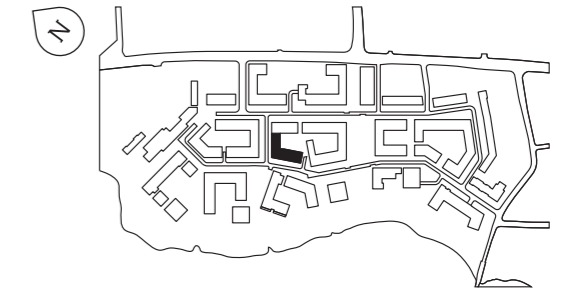
TOTAL AREA
678 sq ft (63 sq m)

Balcony
14'0" x 6'4" (4275 x 1930mm)

Windows are subject to changes



Hawthorn Apartments 1 bedroom apartment



PLOT 486 (1), 505 (3)

Living Dining
17'0" x 12'3" (5195 x 3730mm)

Kitchen
9'8" x 7'4" (2955 x 2250mm)

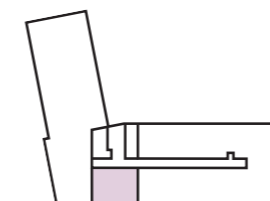
Bedroom
12'3" x 10'7" (3730 x 3240mm)

Bathroom
7'0" x 6'8" (2150 x 2050mm)

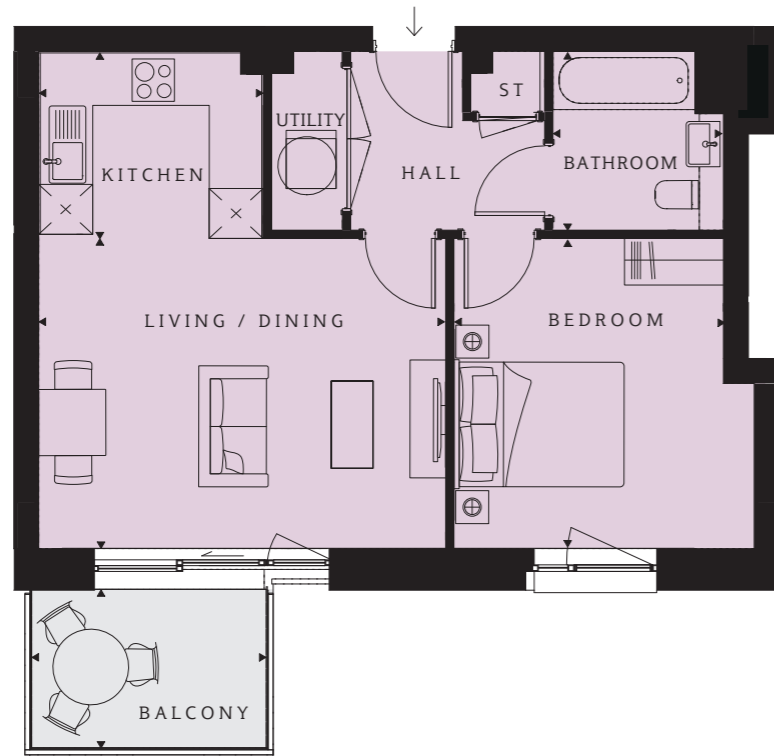
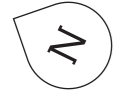
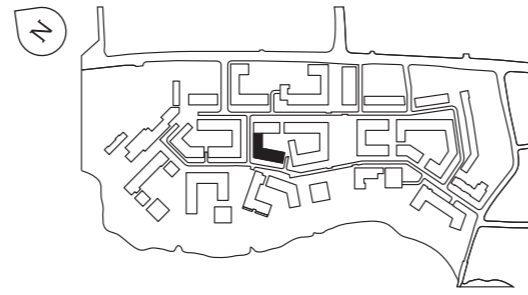
TOTAL AREA
549 sq ft (51 sq m)

Balcony
9'4" x 6'4" (2850 x 1930mm)

Windows are subject to changes



Hawthorn Apartments 1 bedroom apartment



PLOT 488 (1), 495 (2)

Kitchen
8'10" x 7'2" (2700 x 2200mm)

Living/Dining
16'0" x 12'3" (4871 x 3730mm)

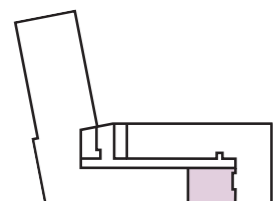
Bedroom
12'3" x 10'7" (3730 x 3240mm)

Bathroom
7'0" x 6'8" (2150 x 2050mm)

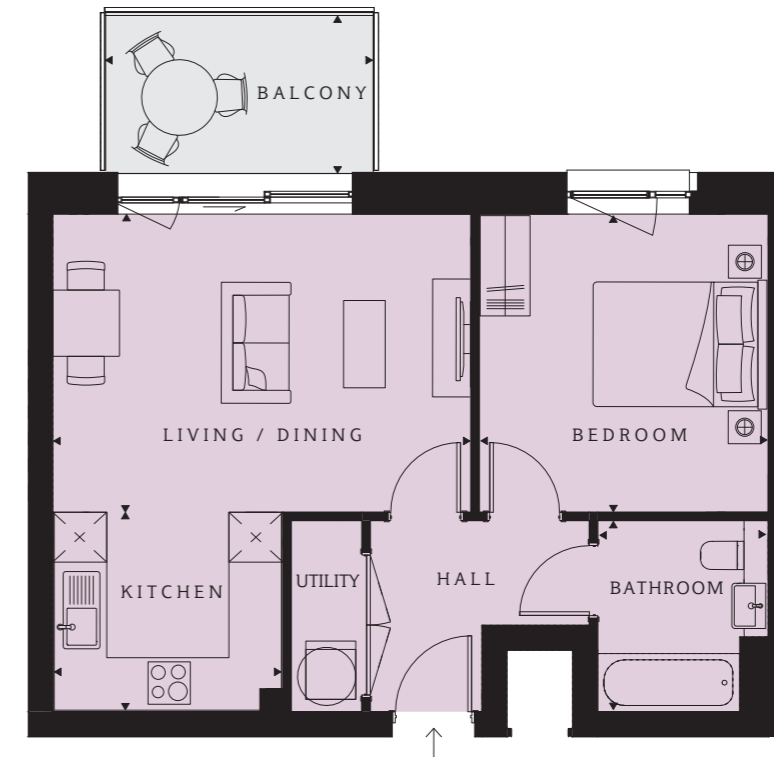
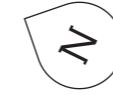
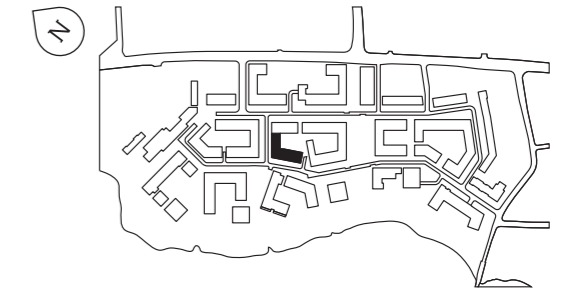
TOTAL AREA
538 sq ft (50 sq m)

Balcony
9'4" x 6'6" (2850 x 1980mm)

Windows are subject to changes



Hawthorn Apartments 1 bedroom apartment



**PLOT 490 (1), 497 (2), 509 (3),
516 (4)**

Living Dining
16'6" x 11'9" (5027 x 3585mm)

Kitchen
9'1" x 7'10" (2767 x 2400mm)

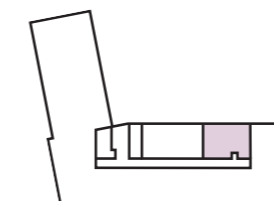
Bedroom
11'9" x 11'5" (3585 x 3474mm)

Bathroom
7'6" x 6'8" (2300 x 2050mm)

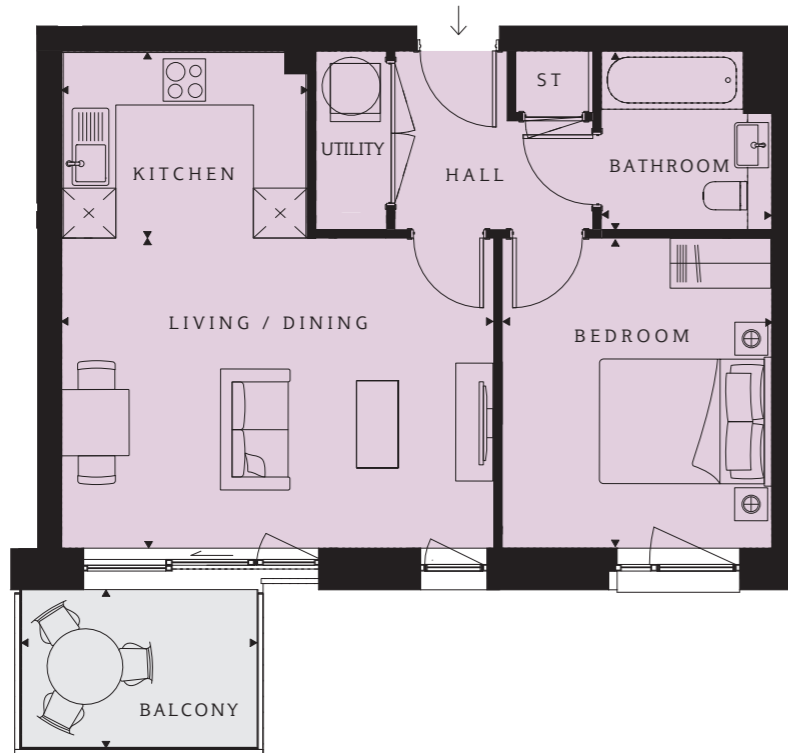
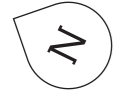
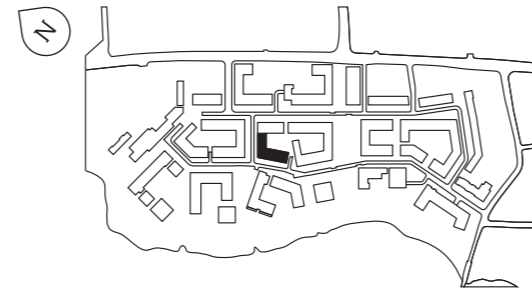
TOTAL AREA
538 sq ft (50 sq m)

Balcony
9'10" x 6'2" (3240 x 1890mm)

Windows are subject to changes



Hawthorn Apartments 1 bedroom apartment



PLOT 493 (2), 512 (4)

Living Dining
17'0" x 12'3" (5195 x 3730mm)

Kitchen
9'8" x 7'2" (2955 x 2200mm)

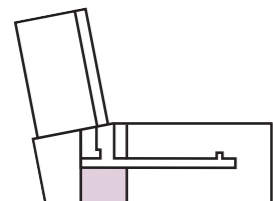
Bedroom
12'3" x 10'9" (3730 x 3290mm)

Bathroom
7'0" x 6'8" (2150 x 2050mm)

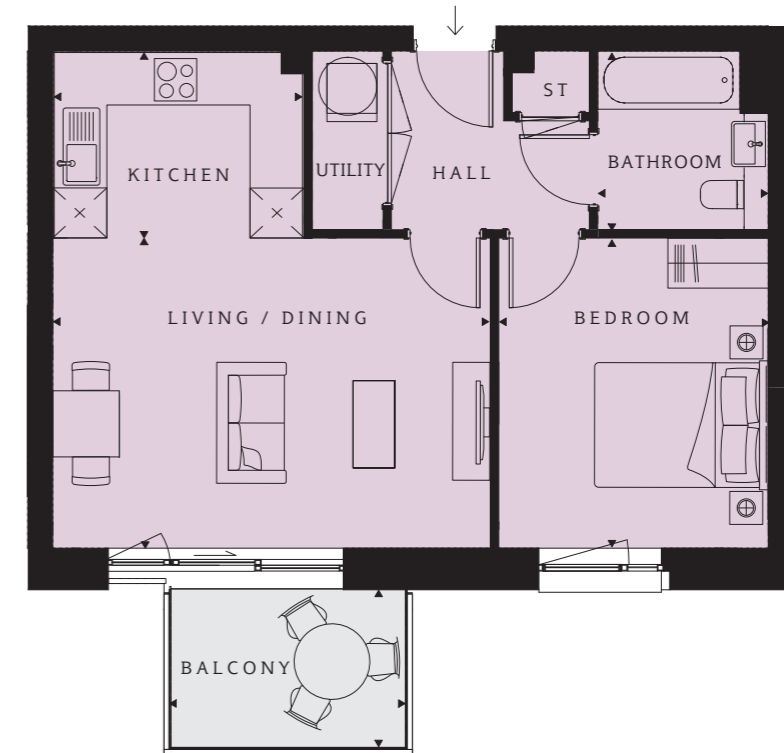
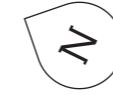
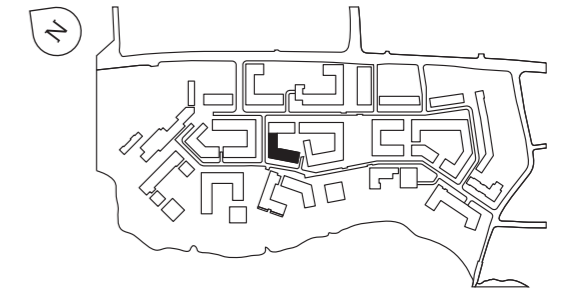
TOTAL AREA
549 sq ft (51 sq m)

Balcony
9'4" x 6'6" (2850 x 1980mm)

Windows are subject to changes



Hawthorn Apartments 1 bedroom apartment



PLOT 507 (3)

Living Dining
17'3" x 12'3" (5261 x 3730mm)

Kitchen
9'11" x 7'4" (3730 x 2250mm)

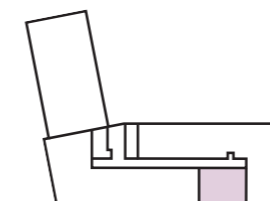
Bedroom
12'3" x 10'7" (3730 x 3240mm)

Bathroom
7'0" x 6'8" (2150 x 2050mm)

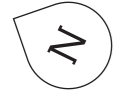
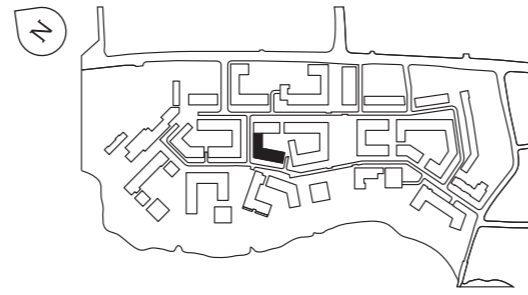
TOTAL AREA
549 sq ft (51sq m)

Balcony
9'4" x 6'4" (2855 x 1930mm)

Windows are subject to changes



Hawthorn Apartments 1 bedroom apartment



PLOT 514 (4)

Living/Dining
17'3" x 12'3" (5261 x 3730mm)

Kitchen
9'11" x 7'4" (3021 x 2250mm)

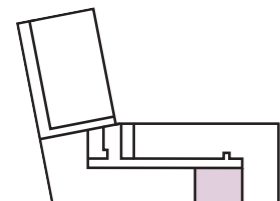
Bedroom
12'3" x 10'7" (3730 x 3240mm)

Bathroom
7'0" x 6'8" (2150 x 2050mm)

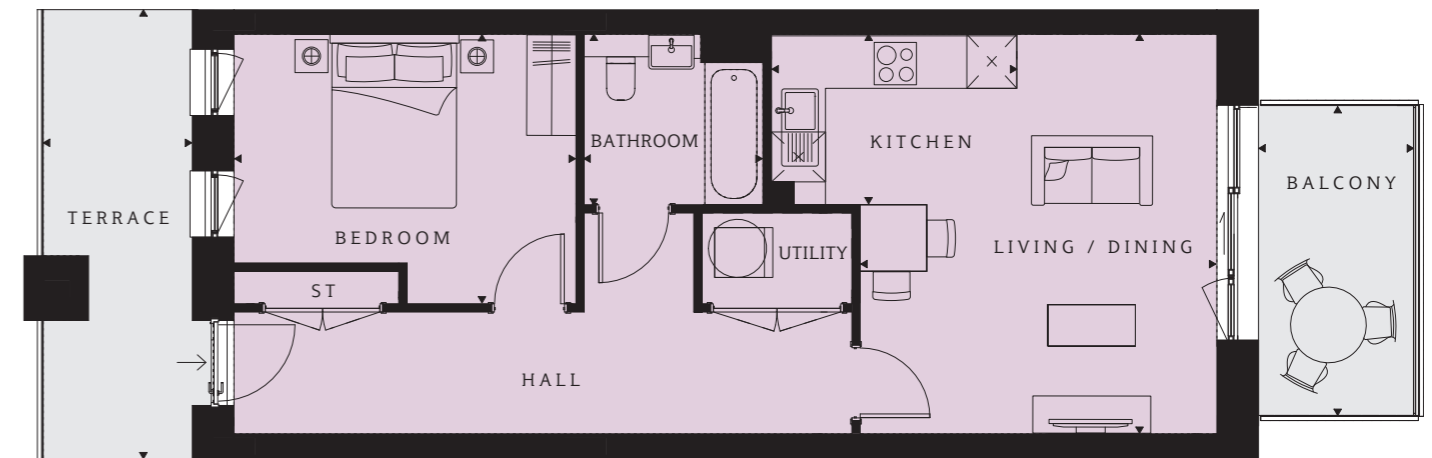
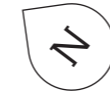
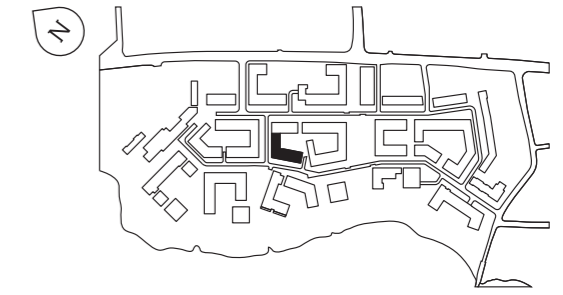
TOTAL AREA
549 sq ft (51 sq m)

Balcony
9'4" x 6'4" (2855 x 1930mm)

Windows are subject to changes



Hawthorn Apartments 1 bedroom apartment



**PLOT 518 (4), 519 (4), 520 (4),
521 (4)**

Living/Dining
17'7" x 15'9" (5356 x 4805mm)

Kitchen
9'8" x 6'8" (2950 x 2050mm)

Bedroom
13'6" x 10'7" (4111 x 3241mm)

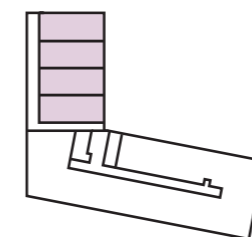
Bathroom
7'0" x 6'8" (2150 x 2050mm)

TOTAL AREA
602 sq ft (56 sq m)

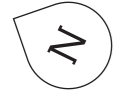
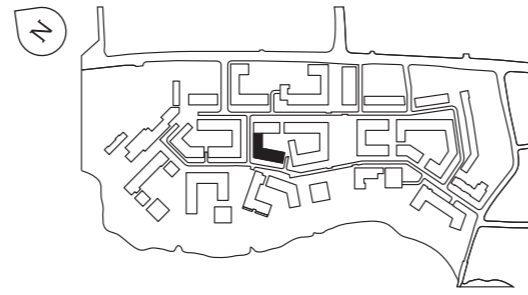
Terrace
16'7" x 5'10" (5045 x 1795mm)

Balcony
12'4" x 6'2" (3750 x 1890mm)

Windows are subject to changes



Hawthorn Apartments 1 bedroom apartment



PLOT 523 (5)

Living/Dining
17'0" x 12'3" (5195 x 3730mm)

Kitchen
9'8" x 7'2" (2955 x 2200mm)

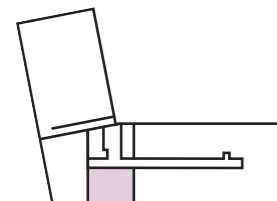
Bedroom
12'3" x 10'7" (3730 x 3240mm)

Bathroom
7'0" x 6'8" (2150 x 2050mm)

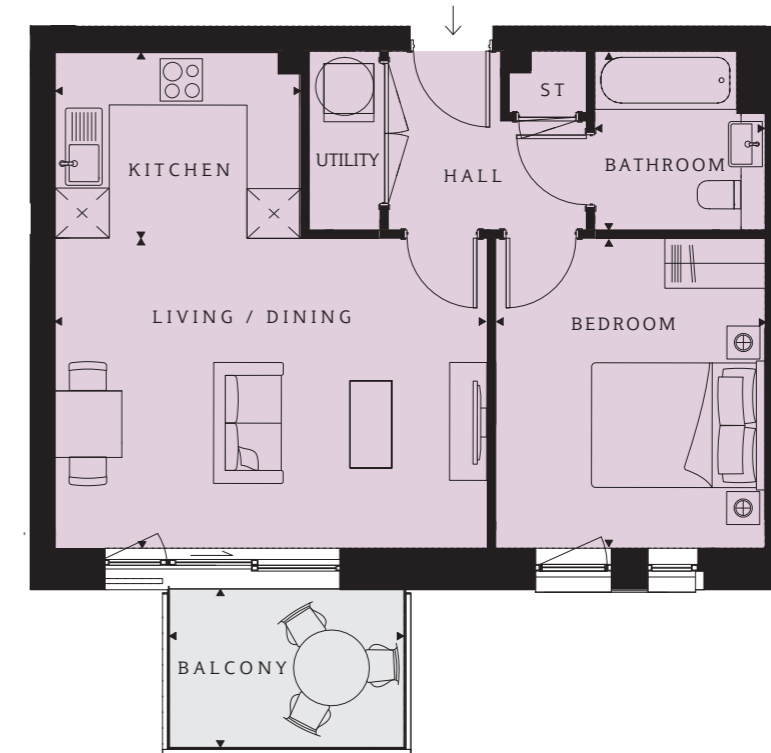
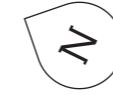
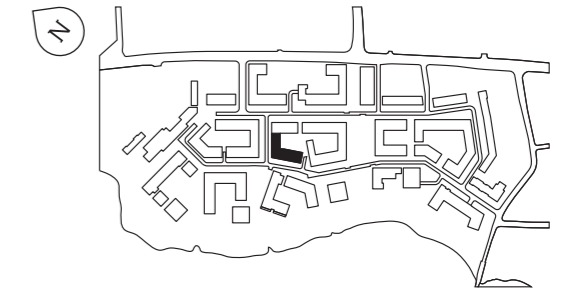
TOTAL AREA
549 sq ft (51 sq m)

Balcony
9'4" x 6'4" (2850 x 1930mm)

Windows are subject to changes



Hawthorn Apartments 1 bedroom apartment



PLOT 525 (5)

Living/Dining
17'3" x 12'3" (5261 x 3730mm)

Kitchen
9'11" x 7'4" (3021 x 2250mm)

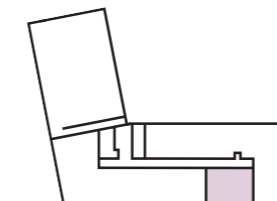
Bedroom
12'3" x 10'7" (3730 x 3240mm)

Bathroom
7'0" x 6'8" (2150 x 2050mm)

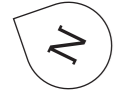
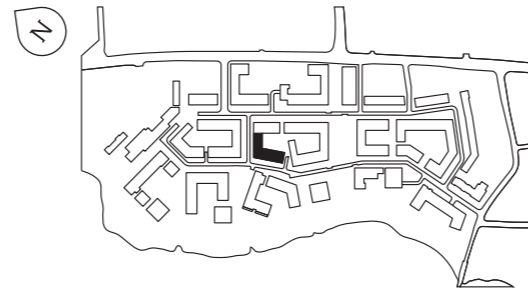
TOTAL AREA
549 sq ft (51 sq m)

Balcony
9'4" x 6'4" (2850 x 1930mm)

Windows are subject to changes



Hawthorn Apartments 1 bedroom apartment



PLOT 527 (5)

Living/Dining
16'6" x 11'9" (5027 x 3585mm)

Kitchen
9'1" x 7'10" (2767 x 2400mm)

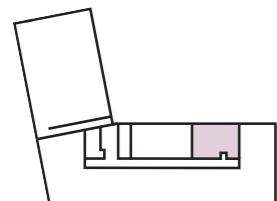
Bedroom
11'9" x 11'5" (3585 x 3474mm)

Bathroom
7'6" x 6'8" (2300 x 2050mm)

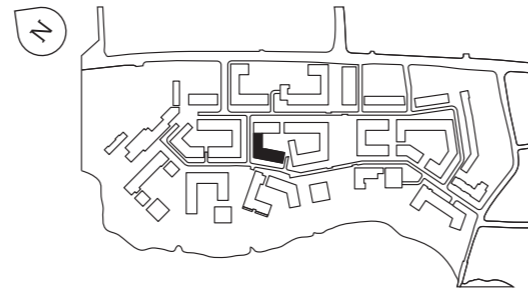
TOTAL AREA
538 sq ft (50 sq m)

Balcony
9'4" x 6'4" (2850 x 1930mm)

Windows are subject to changes

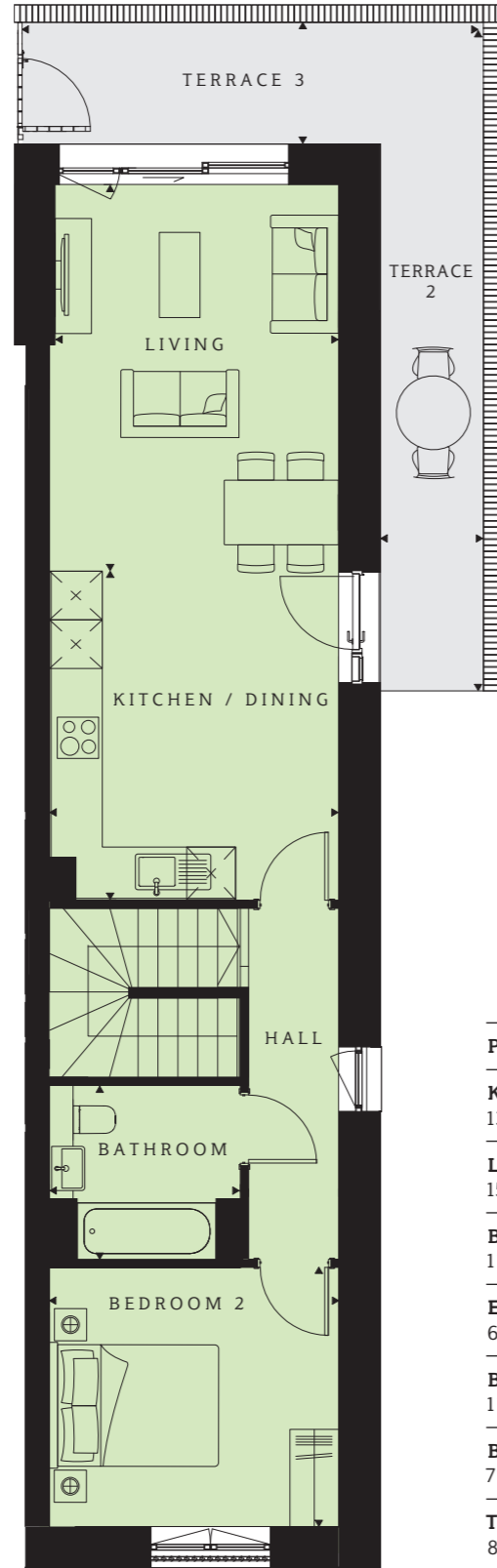
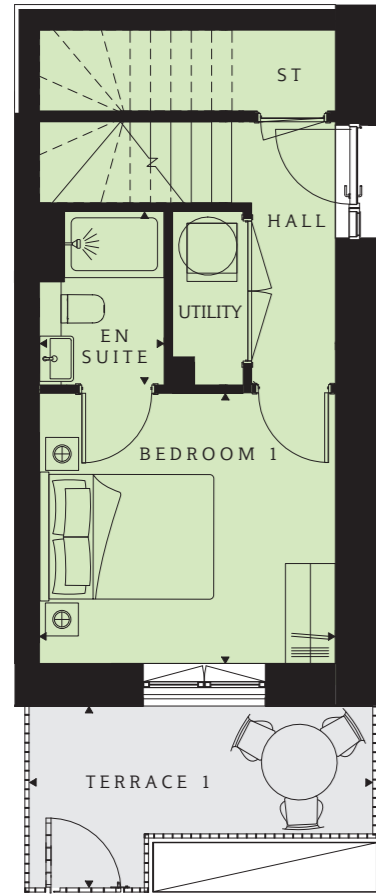


Hawthorn Apartments 2 bedroom apartment



Lower Ground Level

Level 0



PLOT 477 (-1 & 0)

Kitchen/Dining
13'3" x 11'8" (4050 x 3558mm)

Living
15'7" x 11'5" (4766 x 3491mm)

Bedroom 1
11'8" x 10'8" (3558 x 3249mm)

En suite
6'10" x 4'11" (2090 x 1500mm)

Bedroom 2
11'8" x 10'6" (3558 x 3194mm)

Bathroom
7'8" x 7'0" (2350 x 2150mm)

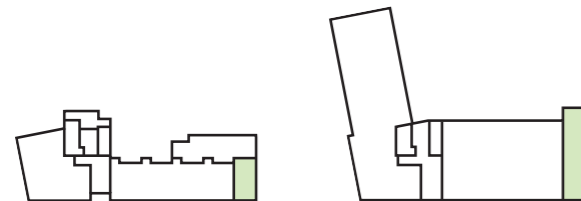
TOTAL AREA
872 sq ft (81 sq m)

Terrace 1
18'10" x 5'1" (5736 x 1550mm)

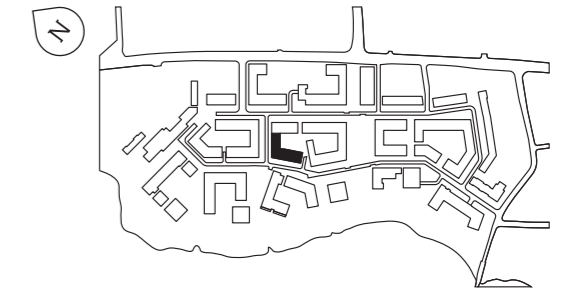
Terrace 2
27'1" x 3'11" (8250 x 1200mm)

Terrace 3
18'8" x 3'11" (5681 x 1200mm)

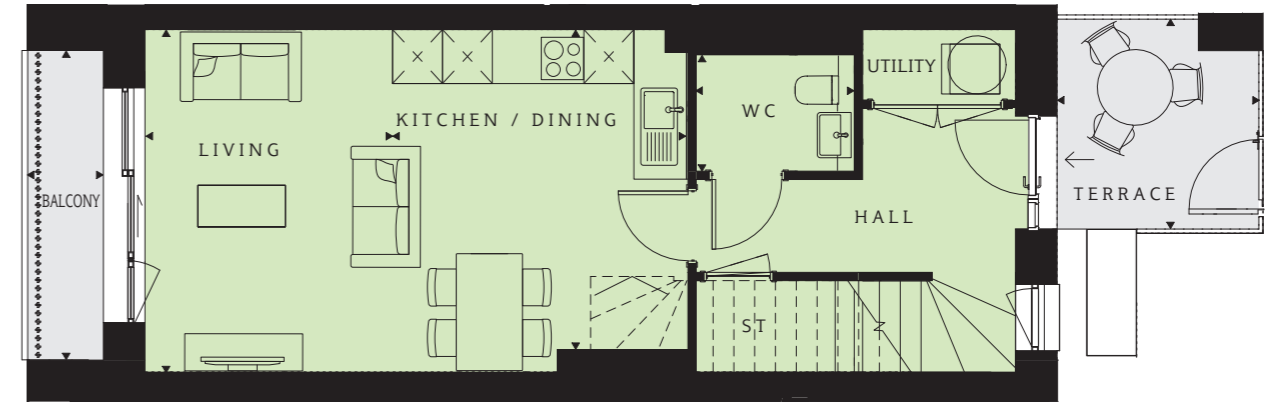
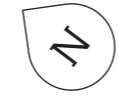
Windows are subject to changes



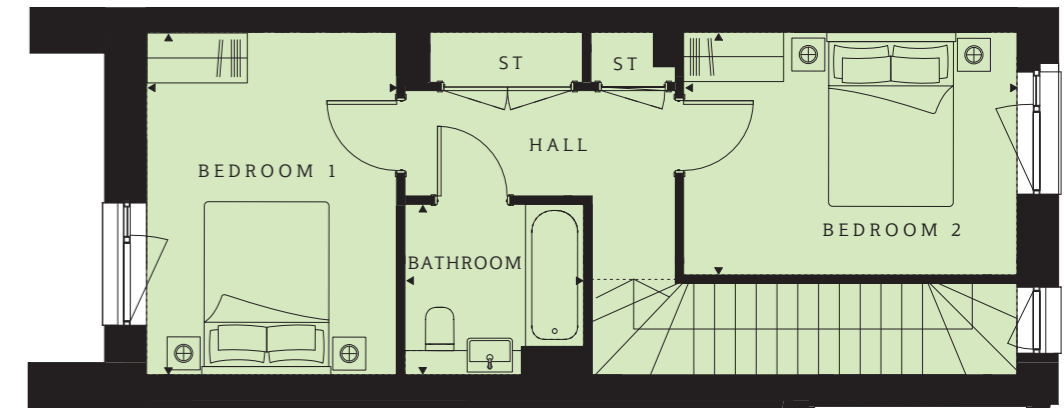
Hawthorn Apartments 2 bedroom apartment



Level 0



Level 1



PLOT 480 (0 & 1), 484 (0 & 1)

Kitchen/Dining
13'6" x 11'8" (4120 x 3550mm)

Living
13'6" x 9'9" (4120 x 2976mm)

WC
6'3" x 4'7" (1900 x 1400mm)

Bedroom 1
13'6" x 9'10" (4120 x 3005mm)

Bedroom 2
13'2" x 9'7" (4009 x 2920mm)

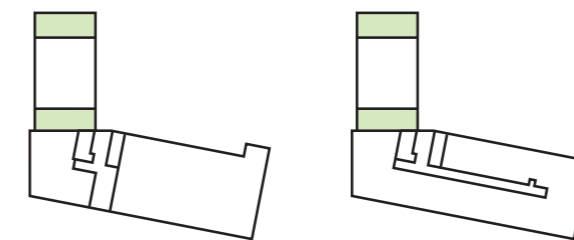
Bathroom
7'0" x 6'8" (2150 x 2050mm)

TOTAL AREA
775 sq ft (72 sq m)

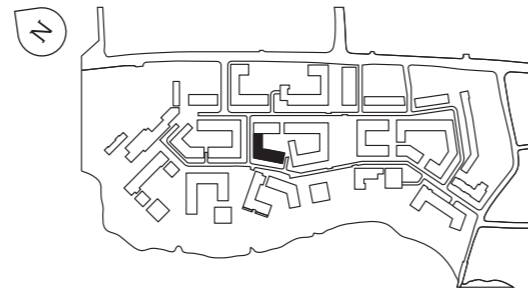
Terrace
8'3" x 7'11" (2525 x 2425mm)

Balcony
12'3" x 3'3" (3725 x 980mm)

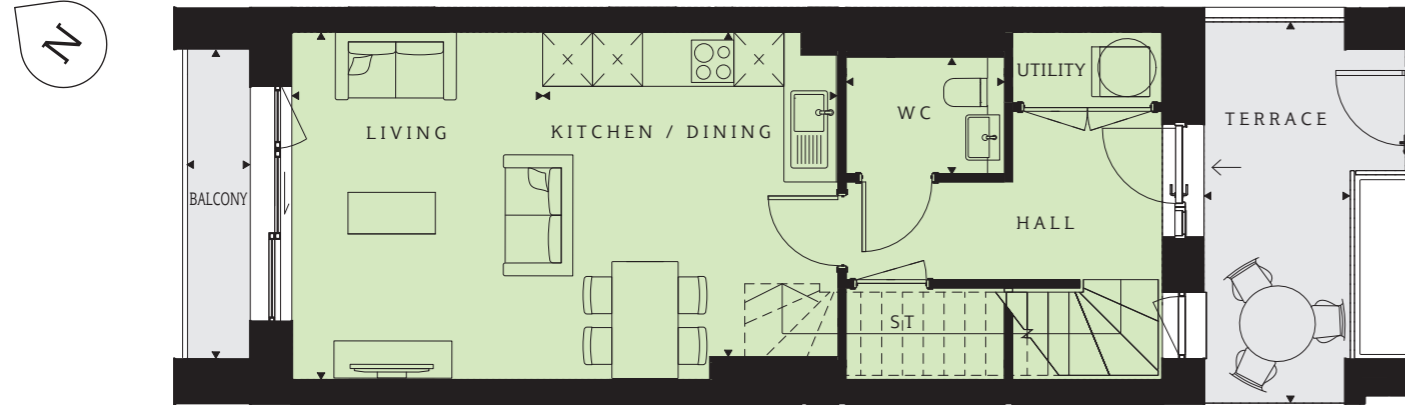
Windows are subject to changes



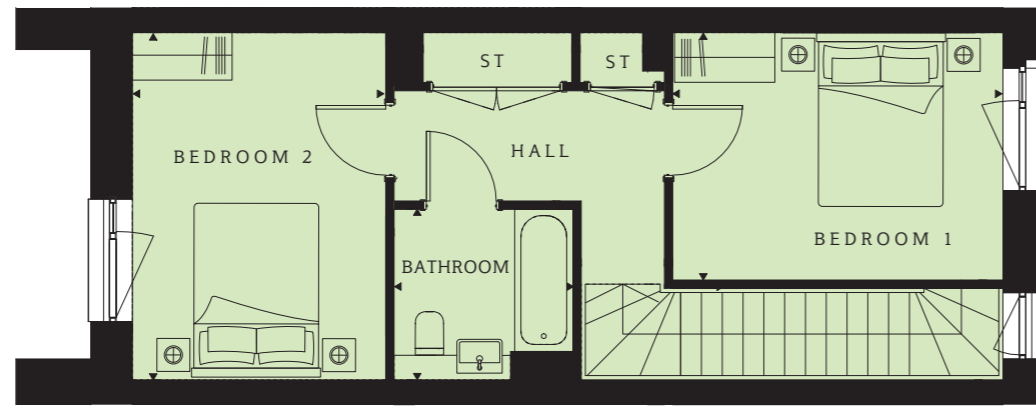
Hawthorn Apartments 2 bedroom apartment



Level 0



Level 1



**PLOT 481 (0 & 1), 482 (0 & 1),
483 (0 & 1)**

Kitchen/Dining
13'8" x 11'8" (4175 x 3550mm)

Living
13'8" x 9'10" (4175 x 3015mm)

WC
6'3" x 4'7" (1900 x 1400mm)

Bedroom 1
13'0" x 9'9" (3970 x 2975mm)

Bedroom 2
13'8" x 10'0" (4175 x 3045mm)

Bathroom
7'0" x 6'8" (2150 x 2050mm)

TOTAL AREA
775 sq ft (72 sq m)

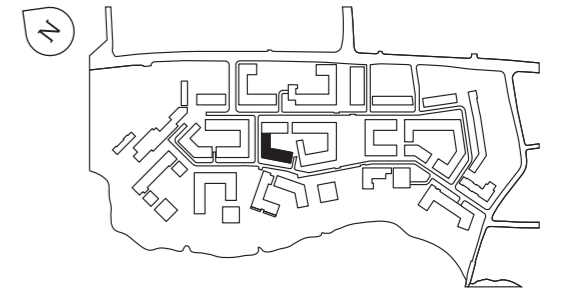
Terrace
15'0" x 5'11" (4585 x 1800mm)

Balcony
12'3" x 3'3" (3725 x 980mm)

Windows are subject to changes



Hawthorn Apartments 2 bedroom apartment



**PLOT 485 (1), 492 (2), 504 (3),
511 (4)**

Kitchen/Dining
13'3" x 6'11" (4079 x 2103mm)

Living
14'11" x 14'10" (4557 x 4519mm)

Bedroom 1
12'10" x 12'6" (3920 x 3816mm)

En suite
6'10" x 4'11" (2090 x 1500mm)

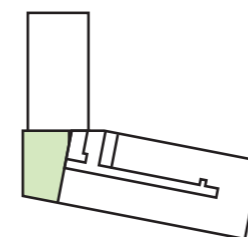
Bedroom 2
14'11" x 9'0" (4557 x 2750mm)

Bathroom
8'10" x 8'2" (2700 x 2500mm)

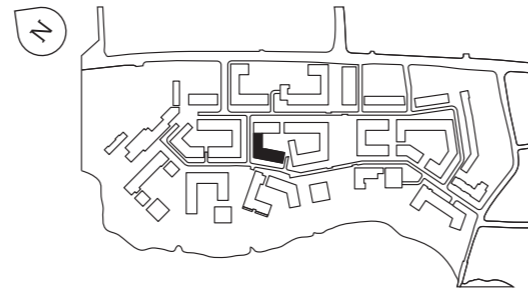
TOTAL AREA
938 sq ft (87 sq m)

Balcony
12'4" x 6'4" (3775 x 1930mm)

Windows are subject to changes



Hawthorn Apartments 2 bedroom apartment



PLOT 487 (1), 506 (3)

Kitchen/Dining
13'4" x 6'1" (4080 x 1850mm)

Living
13'6" x 13'4" (4130 x 4080mm)

Bedroom 1
12'5" x 10'10" (3790 x 3300mm)

En suite
6'10" x 4'11" (2090 x 1500mm)

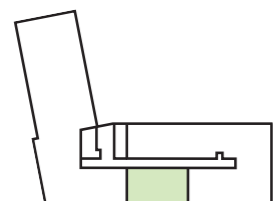
Bedroom 2
12'1" x 8'8" (3693 x 2640mm)

Bathroom
7'0" x 6'10" (2150 x 2090mm)

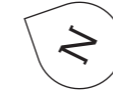
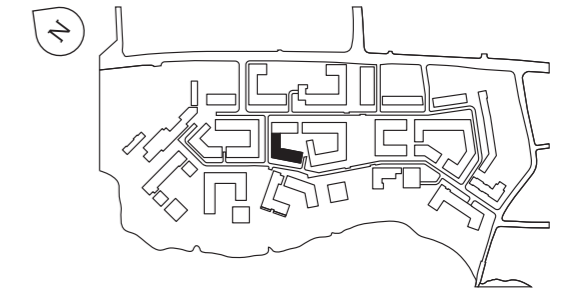
TOTAL AREA
721 sq ft (67 sq m)

Balcony
12'4" x 6'4" (3775 x 1930mm)

Windows are subject to changes



Hawthorn Apartments 2 bedroom apartment



**PLOT 491 (1), 498 (2), 510 (3),
517 (4)**

Kitchen/Dining
13'4" x 6'0" (4077 x 1829mm)

Living
13'7" x 13'4" (5985 x 4077mm)

Bedroom 1
12'5" x 10'10" (3795 x 3300mm)

En suite
6'10" x 4'11" (2090 x 1500mm)

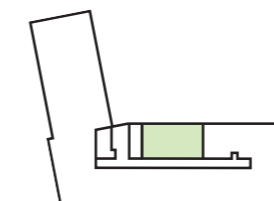
Bedroom 2
12'1" x 8'8" (3693 x 2646mm)

Bathroom
7'0" x 6'10" (2150 x 2090mm)

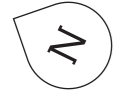
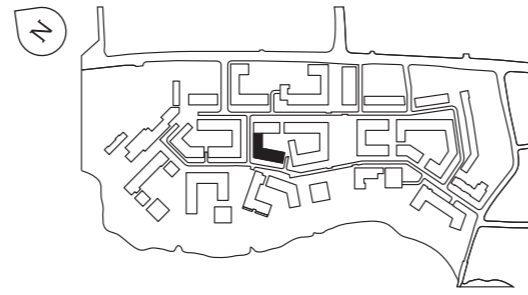
TOTAL AREA
721 sq ft (67 sq m)

Balcony
12'4" x 6'2" (3750 x 1890mm)

Windows are subject to changes



Hawthorn Apartments 2 bedroom apartment



PLOT 494 (2), 513 (4)

Kitchen/Dining
13'4" x 6'1" (4080 x 1850mm)

Living
13'6" x 13'4" (4130 x 4080mm)

Bedroom 1
12'5" x 10'10" (3790 x 3300mm)

En suite
6'10" x 4'11" (2090 x 1500mm)

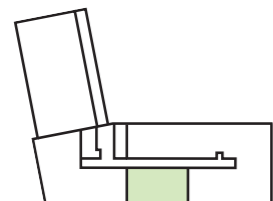
Bedroom 2
12'1" x 8'8" (3693 x 2640mm)

Bathroom
7'0" x 6'10" (2150 x 2090mm)

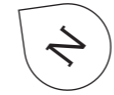
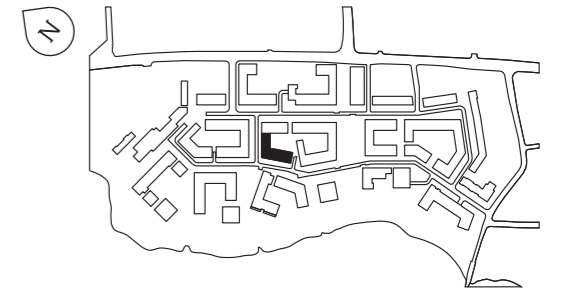
TOTAL AREA
721 sq ft (67 sq m)

Balcony
12'4" x 6'2" (3750 x 1890mm)

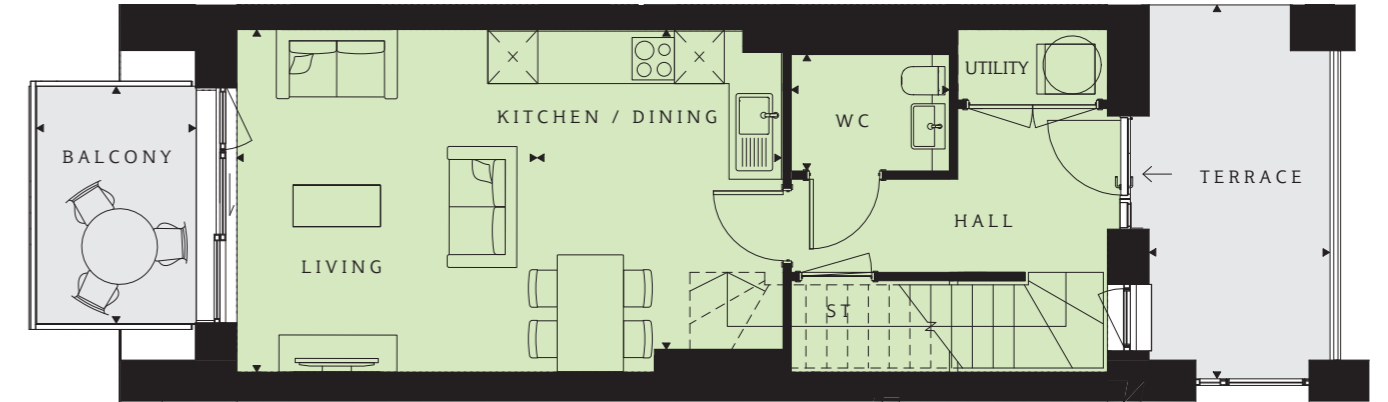
Windows are subject to changes



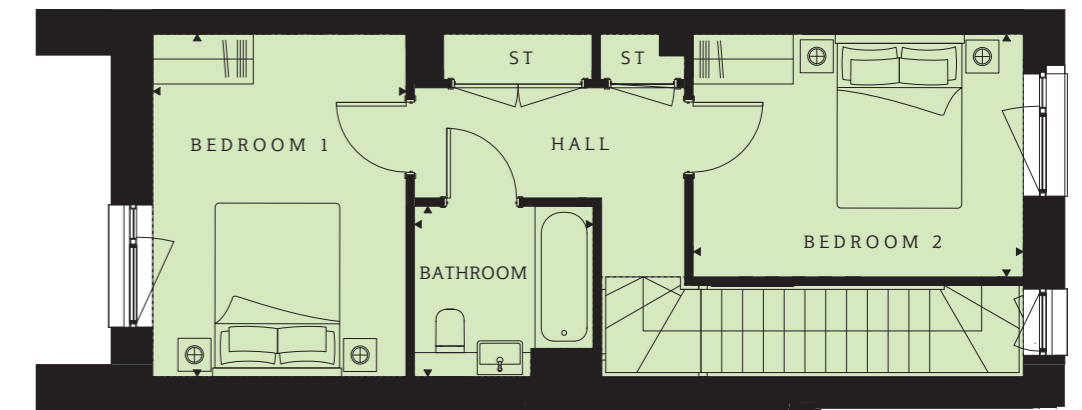
Hawthorn Apartments 2 bedroom apartment



Level 2



Level 3



PLOT 499 (2 & 3), 503 (2 & 3)

Kitchen/Dining
11'7" x 13'6" (3550 x 4120mm)

Living
13'6" x 9'10" (4120 x 3015mm)

WC
6'3" x 4'7" (1900 x 1400mm)

Bedroom 1
13'6" x 10'2" (4120 x 3095mm)

Bedroom 2
13'0" x 9'7" (3970 x 2920mm)

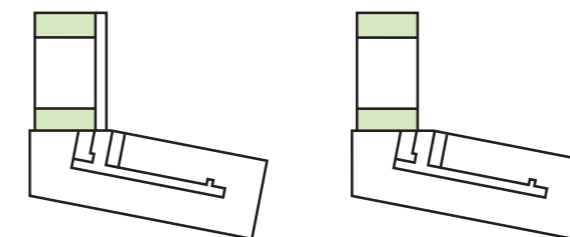
Bathroom
7'0" x 6'8" (2150 x 2050mm)

TOTAL AREA
924 sq ft (86 sq m)

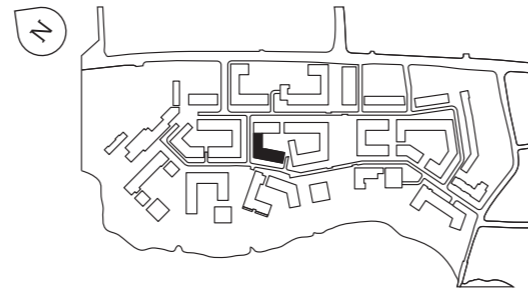
Terrace
15'7" x 5'10" (4775 x 1800mm)

Balcony
9'1" x 6'0" (2760 x 1840mm)

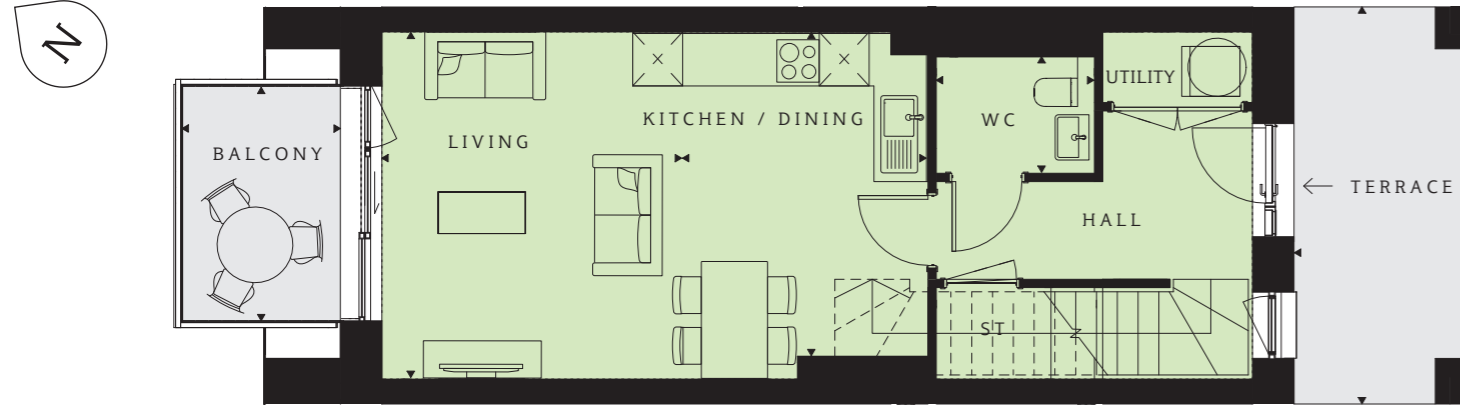
Windows are subject to changes



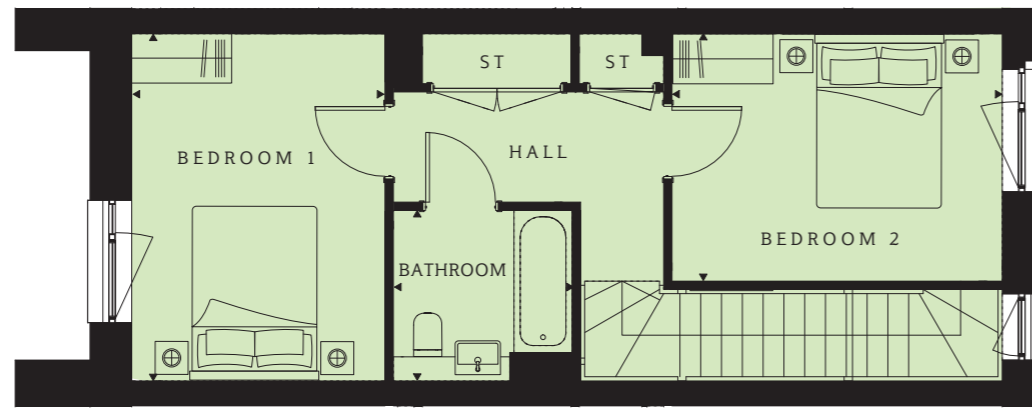
Hawthorn Apartments 2 bedroom apartment



Level 2



Level 3



**PLOT 500 (2 & 3), 501 (2 & 3),
502 (2 & 3)**

Kitchen/Dining
13'8" x 11'8" (4175 x 3550mm)

Living
13'8" x 9'10" (4175 x 3015mm)

WC
6'3" x 4'7" (1900 x 1400mm)

Bedroom 1
13'8" x 10'0" (4175 x 3045mm)

Bedroom 2
13'0" x 9'9" (3970 x 2975mm)

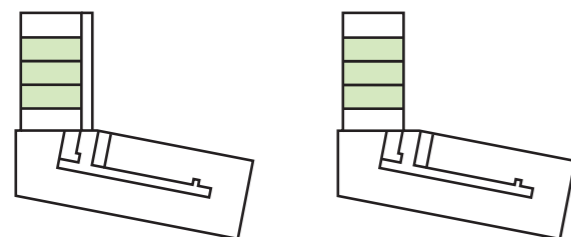
Bathroom
7'0" x 6'8" (2150 x 2050mm)

TOTAL AREA
872 sq ft (81 sq m)

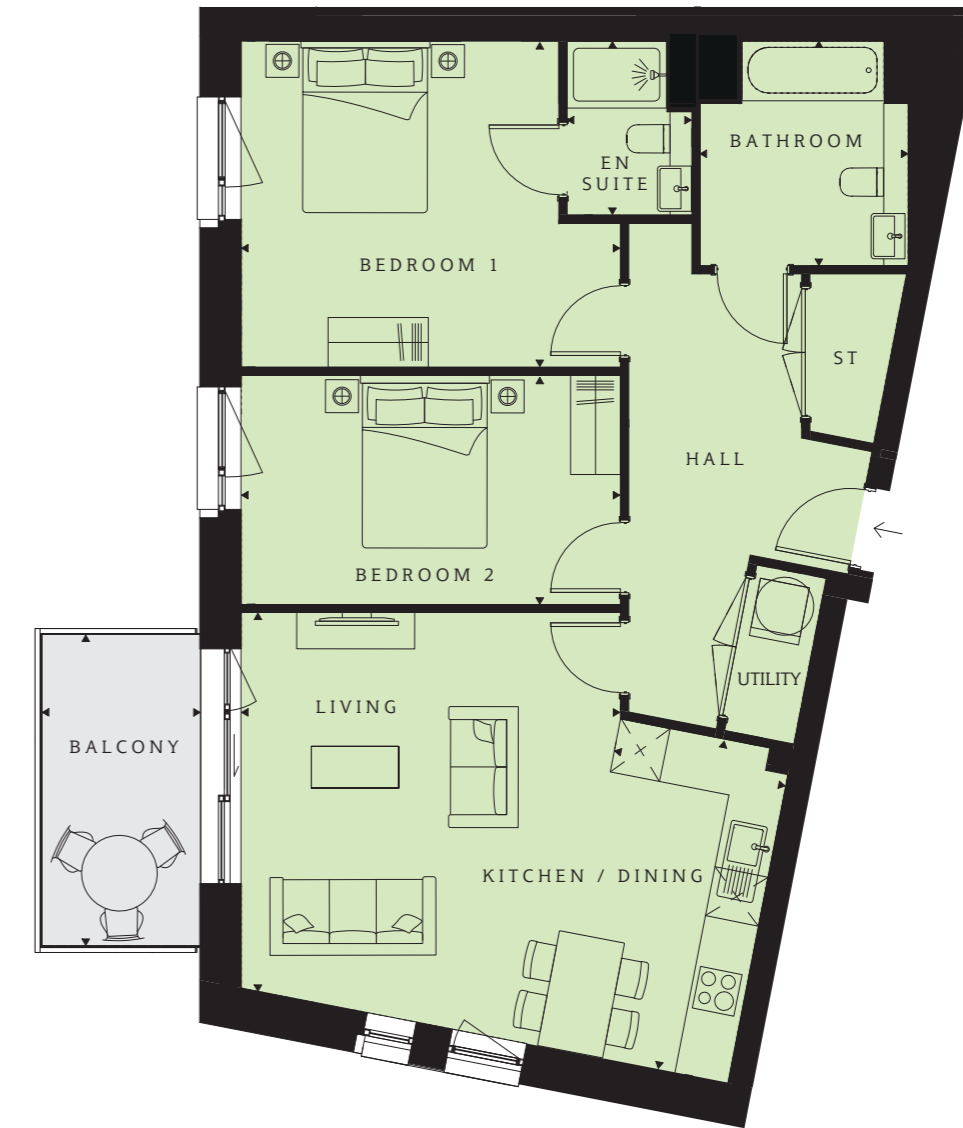
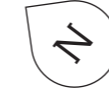
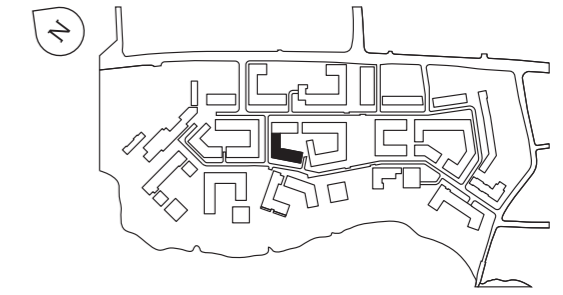
Terrace
15'7" x 5'10" (4775 x 1800mm)

Balcony
9'1" x 6'0" (2760 x 1840mm)

Windows are subject to changes



Hawthorn Apartments 2 bedroom apartment



PLOT 522 (5)

Kitchen/Dining
13'3" x 6'11" (4049 x 2103mm)

Living
14'11" x 14'10" (4557 x 4519mm)

Bedroom 1
14'11" x 12'10" (4557 x 3920mm)

En suite
6'10" x 4'11" (2090 x 1500mm)

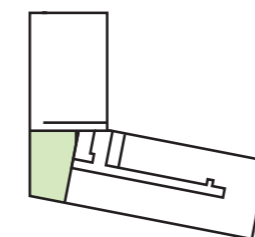
Bedroom 2
14'11" x 9'0" (4557 x 2750mm)

Bathroom
8'10" x 8'2" (2700 x 2500mm)

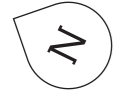
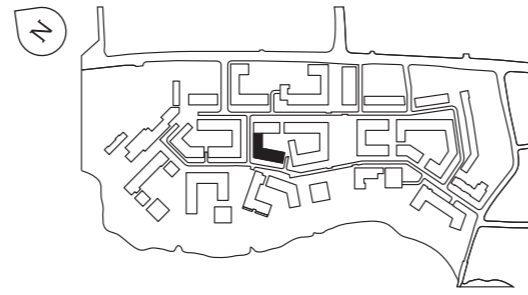
TOTAL AREA
936 sq ft (87 sq m)

Balcony
12'4" x 6'2" (3570 x 1890mm)

Windows are subject to changes



Hawthorn Apartments 2 bedroom apartment



PLOT 524 (5)

Kitchen/Dining
13'4" x 6'1" (4080 x 1850mm)

Living
13'6" x 13'4" (4130 x 4080mm)

Bedroom 1
12'5" x 10'10" (3790 x 3300mm)

En suite
6'10" x 4'11" (2090 x 1500mm)

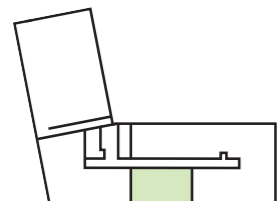
Bedroom 2
12'1" x 8'8" (3693 x 2640mm)

Bathroom
7'0" x 6'10" (2150 x 2090mm)

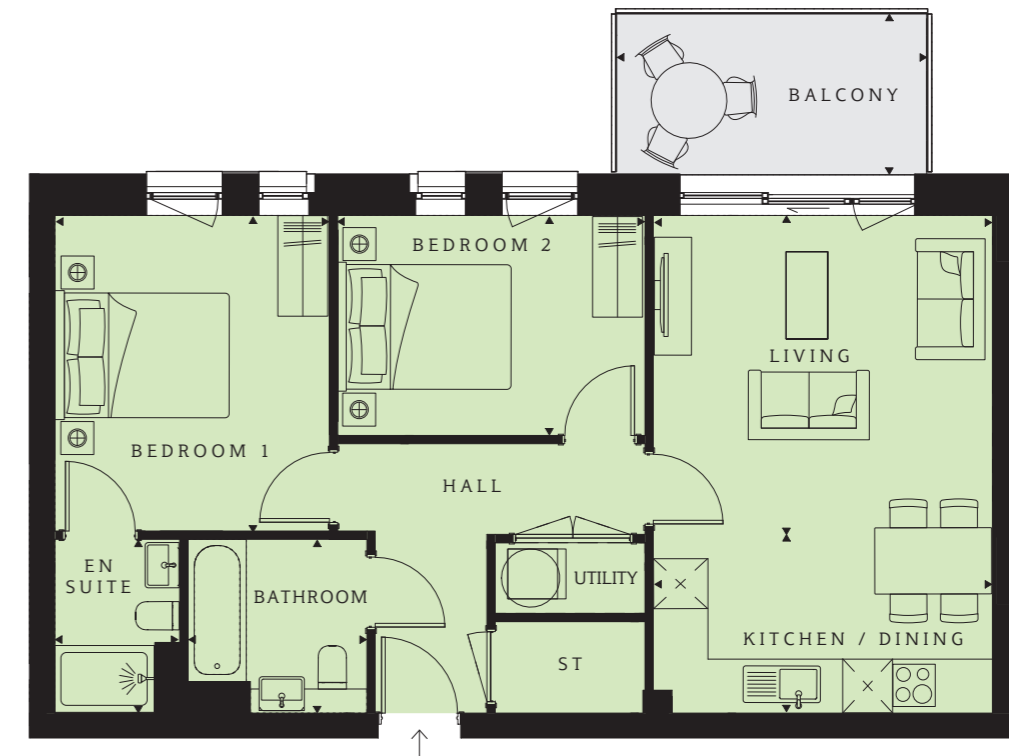
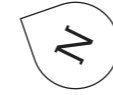
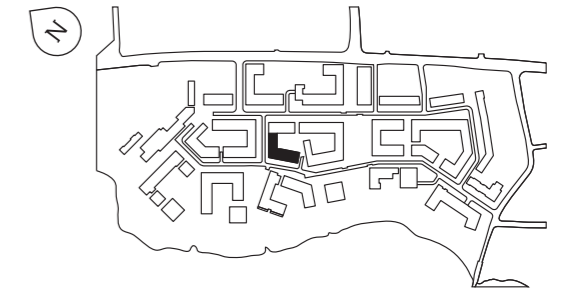
TOTAL AREA
721 sq ft (67 sq m)

Balcony
12'4" x 6'2" (3750 x 1890mm)

Windows are subject to changes



Hawthorn Apartments 2 bedroom apartment



PLOT 528 (5)

Kitchen/Dining
13'4" x 6'1" (4077 x 1850mm)

Living
13'7" x 13'4" (4135 x 4077mm)

Bedroom 1
12'5" x 10'10" (3795 x 3300mm)

En suite
6'10" x 4'11" (2090 x 1500mm)

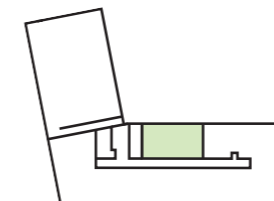
Bedroom 2
12'1" x 8'8" (3693 x 2646mm)

Bathroom
7'0" x 6'10" (2150 x 2090mm)

TOTAL AREA
721 sq ft (67 sq m)

Balcony
12'4" x 6'2" (3750 x 1890mm)

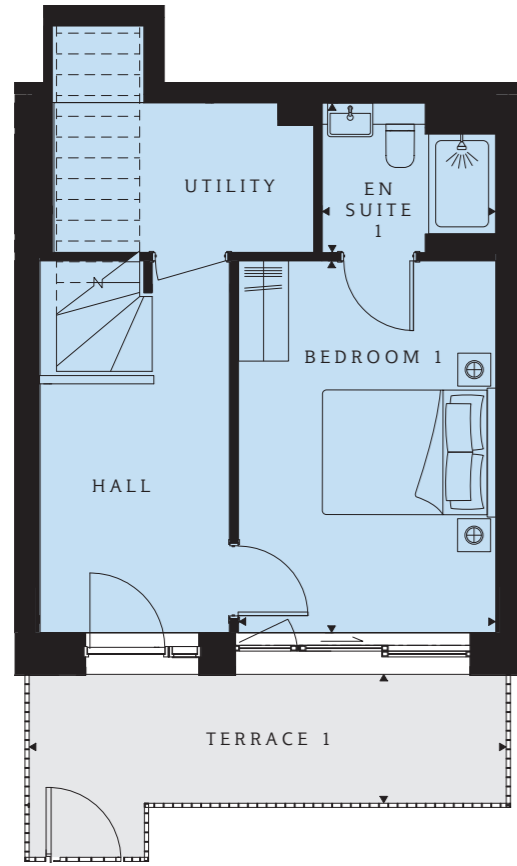
Windows are subject to changes



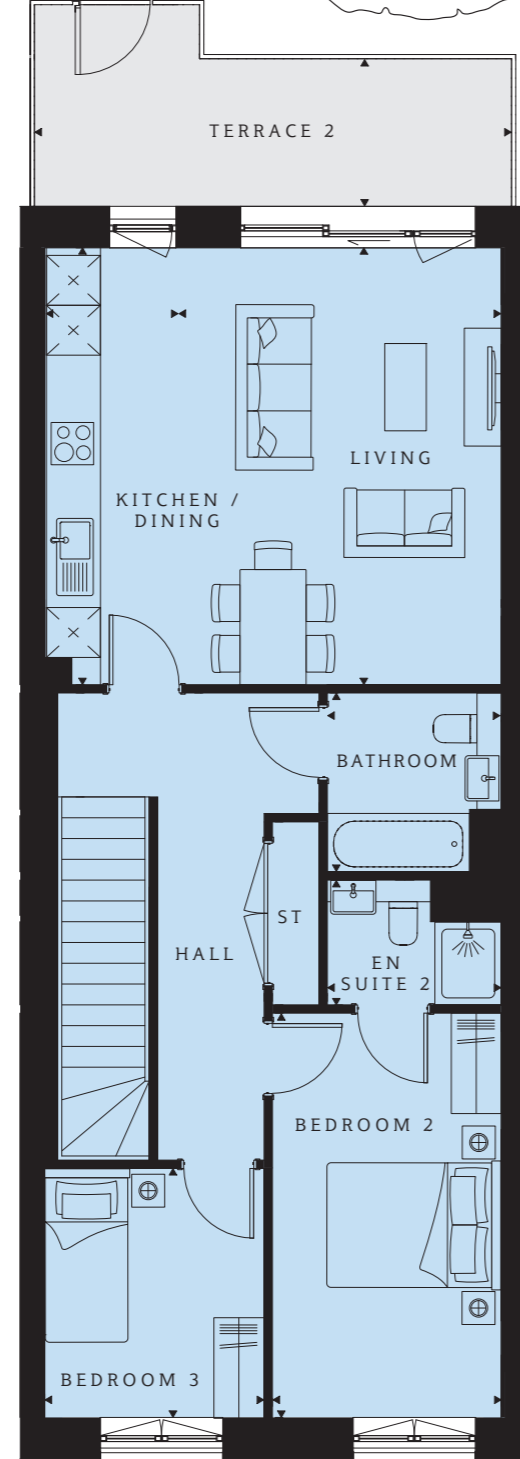
Hawthorn Apartments 3 bedroom apartment



Lower Ground Level



Level 0



**PLOT 473 (-1 & 0), 474 (-1 & 0),
475 (-1 & 0), 476 (-1 & 0)**

Kitchen/Dining
17'3" x 6'1" (5253 x 1850mm)

Living
17'3" x 11'11" (5253 x 3636mm)

Bedroom 1
14'8" x 10'2" (4472 x 3097mm)

En suite 1
6'10" x 5'11" (2090 x 1800mm)

Bedroom 2
15'11" x 9'0" (4862 x 2750mm)

En suite 2
6'10" x 4'11" (2090 x 1500mm)

Bedroom 3
9'10" x 8'8" (2994 x 2636mm)

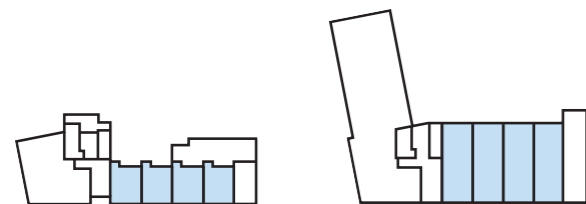
Bathroom
7'0" x 6'10" (2150 x 2090mm)

TOTAL AREA
1162 sq ft (108 sq m)

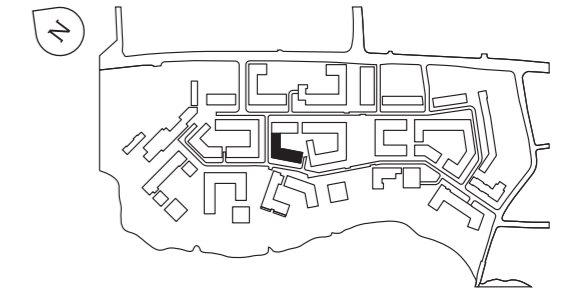
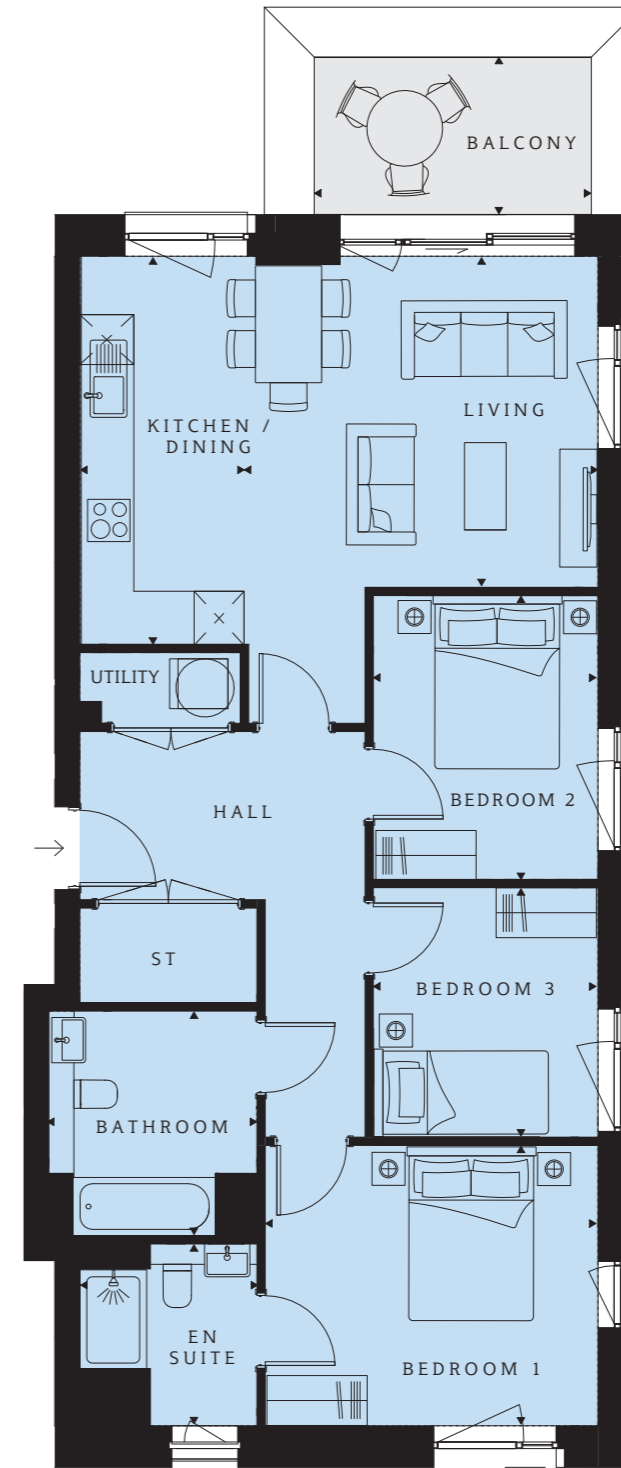
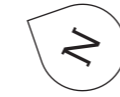
Terrace 1
18'10" x 5'1" (5735 x 1550mm)

Terrace 2
18'10" x 5'1" (5735 x 1550mm)

Windows are subject to changes



Hawthorn Apartments 3 bedroom apartment



PLOT 489 (1)

Kitchen/Dining
15'3" x 6'1" (4666 x 1850mm)

Living
14'4" x 13'0" (4380 x 3981mm)

Bedroom 1
13'1" x 11'0" (4000 x 3371mm)

En suite
7'2" x 7'0" (2187 x 2130mm)

Bedroom 2
11'2" x 8'10" (3413 x 2700mm)

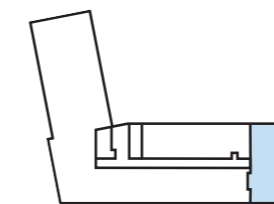
Bedroom 3
9'10" x 8'10" (3000 x 2700mm)

Bathroom
8'10" x 8'2" (2700 x 2500mm)

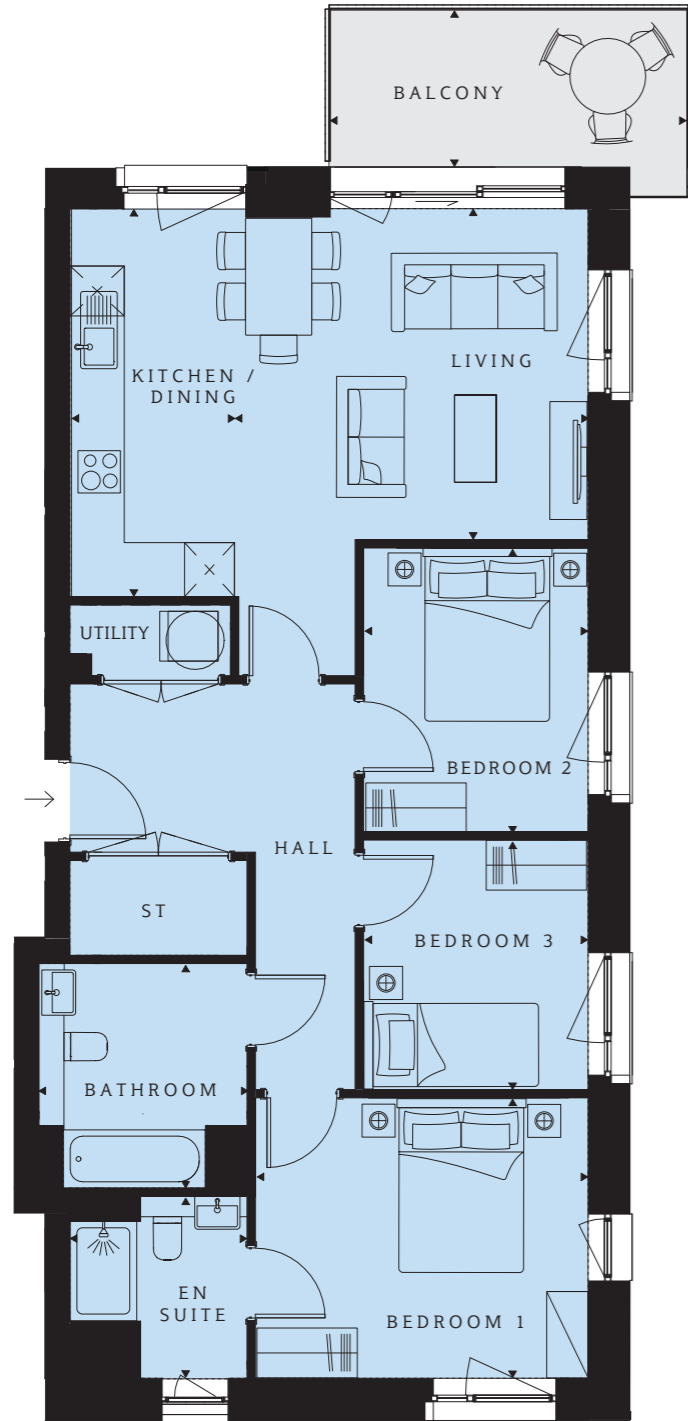
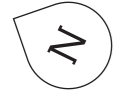
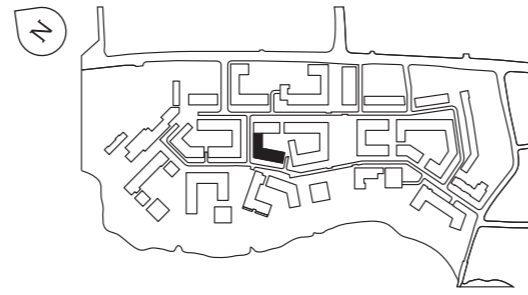
TOTAL AREA
958 sq ft (89 sq m)

Balcony
9'10" x 6'10" (3000 x 2090mm)

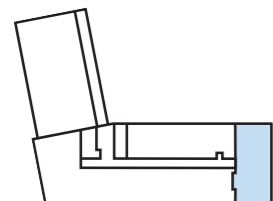
Windows are subject to changes



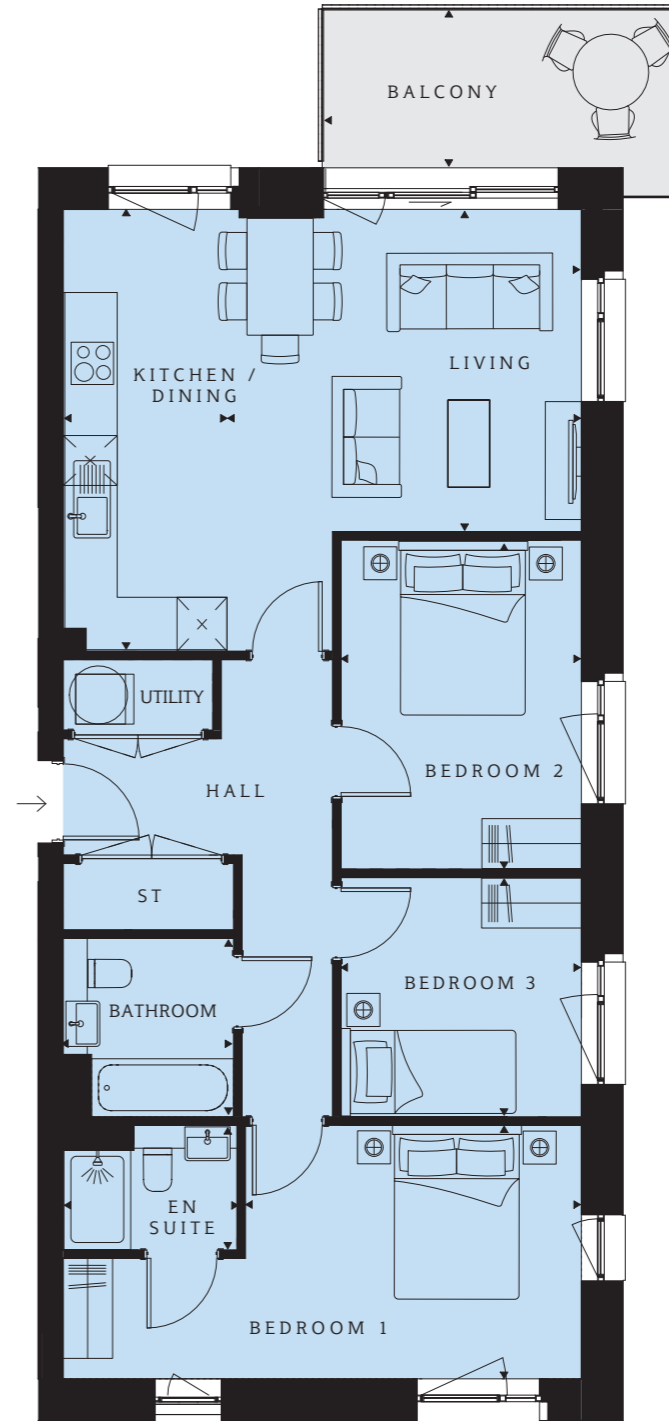
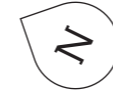
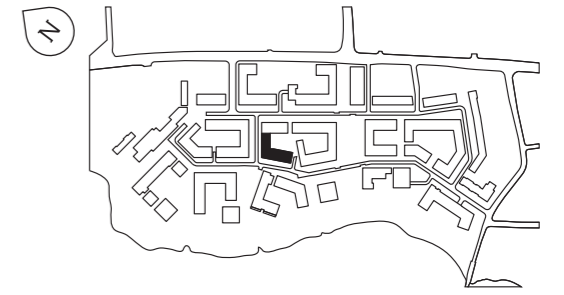
Hawthorn Apartments 3 bedroom apartment



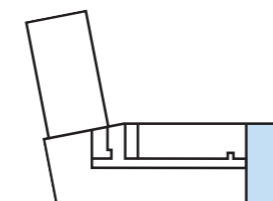
PLOT 496 (2)
Kitchen/Dining 15'3" x 6'1" (4666 x 1850mm)
Living 14'4" x 13'0" (4380 x 3981mm)
Bedroom 1 13'1" x 11'0" (4000 x 3371mm)
En suite 7'2" x 7'0" (2187 x 2130mm)
Bedroom 2 11'2" x 8'10" (3413 x 2700mm)
Bedroom 3 9'10" x 8'10" (3000 x 2700mm)
Bathroom 8'10" x 8'2" (2700 x 2500mm)
TOTAL AREA 958 sq ft (89 sq m)
Balcony 14'2" x 6'2" (4315 x 1890mm)
Windows are subject to changes



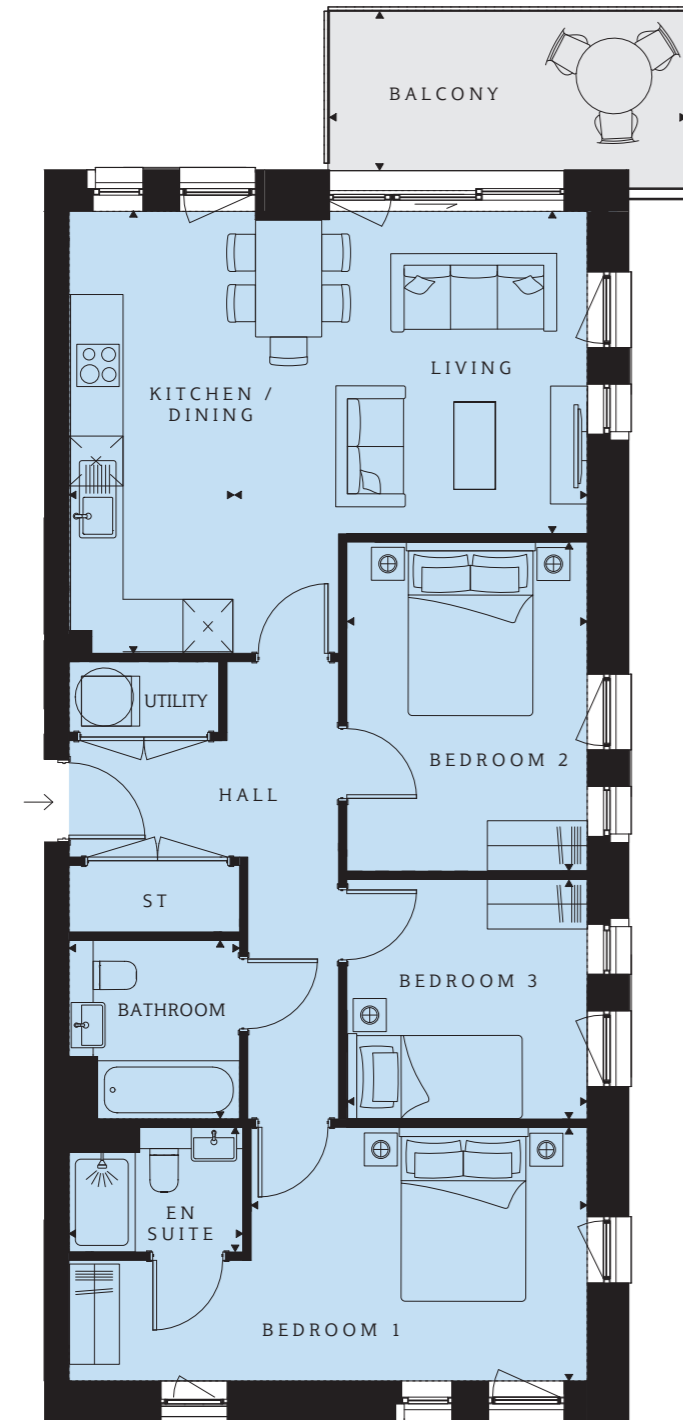
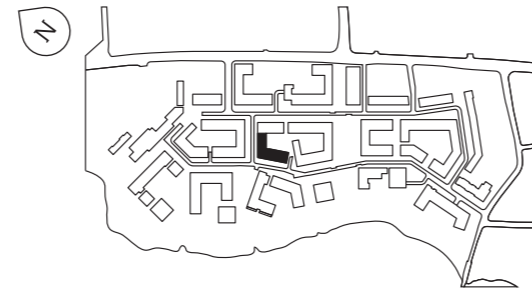
Hawthorn Apartments 3 bedroom apartment



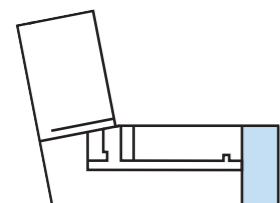
PLOT 508 (3), 515 (4)
Kitchen/Dining 17'5" x 6'5" (5315 x 1973mm)
Living 17'5" x 13'11" (5315 x 4257mm)
Bedroom 1 13'3" x 10'0" (4040 x 3050mm)
En suite 6'10" x 4'11" (2090 x 1500mm)
Bedroom 2 13'0" x 9'6" (3958 x 2890mm)
Bedroom 3 9'6" x 9'5" (2890 x 2880mm)
Bathroom 7'0" x 6'8" (2150 x 2050mm)
TOTAL AREA 947 sq ft (88 sq m)
Balcony 14'2" x 6'2" (4315 x 1890mm)
Windows are subject to changes



Hawthorn Apartments 3 bedroom apartment



PLOT 526 (5)
Kitchen/Dining 17'5" x 6'5" (5315 x 1973mm)
Living 17'5" x 13'11" (5315 x 4257mm)
Bedroom 1 13'3" x 10'0" (4040 x 3050mm)
En suite 6'10" x 4'11" (2090 x 1500mm)
Bedroom 2 13'0" x 9'6" (3958 x 2890mm)
Bedroom 3 9'6" x 9'5" (2890 x 2880mm)
Bathroom 7'0" x 6'8" (2150 x 2050mm)
TOTAL AREA 947 sq ft (88 sq m)
Balcony 14'2" x 6'2" (4315 x 1890mm)
Windows are subject to changes



Specification

Kitchen

- Individually designed German kitchens with soft close doors and drawers
- Colour choice of wall and base units*
- Matching worktops and full-height upstands
- Under-cabinet lighting
- Integrated recycle bins
- Stainless steel single bowl sink and chrome tap to one-bedroom apartments
- Stainless steel 1 ½ bowl sink and chrome tap to two and three-bedroom apartments

- Fully integrated Electrolux Group appliances including single oven, ceramic hob, extractor, dishwasher and fridge freezer
- Eye-level cooking**

Bathroom

- Grohe brassware
- White semi-recessed wash hand basin
- Back to wall WC pan with soft close WC seat
- Concealed cistern and dual flushplate
- White steel bath
- Chrome hinged bathscreen
- White heated towel rail
- Ceramic wall tiles

En Suite

- Grohe brassware
- White semi-recessed wash hand basin
- Back to wall WC pan with softclose WC seat
- Concealed cistern and dual flushplate
- White shower tray
- Chrome shower doors
- White heated towel rail
- Shaver socket
- Ceramic wall tiles

General

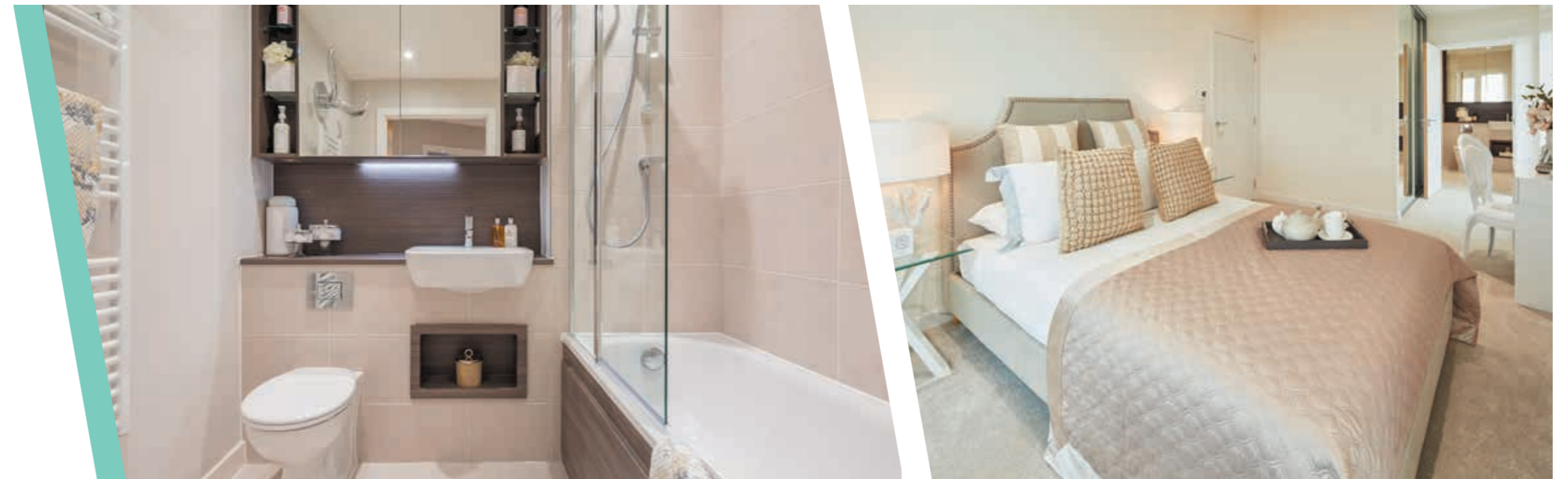
- Underfloor heating throughout
- Double USB points to living area
- Video door entry†
- BT TV/Sky+/FM connectivity to Living Area
- Downlighters to hallway, kitchen, living area and bathroom(s)
- Ceiling pendants to bedrooms
- Cat5e wiring
- Fibre broadband††
- Flooring finishes available at an additional cost – please speak to a Sales Adviser for more information

Bedrooms

- Double USB points
- BT TV/FM connectivity to master bedroom

Communal areas and facilities

- 12-hour concierge service, based in The Vista
- CCTV security system coverage across all residential buildings and entrances
- Car parking for all homes^
- Residents' fitness suite^^
- Two lifts to all floors
- Interior - designed entrance foyer
- Retail space on site
- On-site community centre



*Subject to stage of construction

**Where possible

†Duplex apartments on ground level accessed directly from the street will have door bells only

††Please speak to a Sales Adviser for more information on suppliers

^Car parking will be available from autumn 2019

^^To be completed in 2019

Why Barratt London?

About Barratt London

Barratt London is one of the market-leading residential developers in the Capital. With over 30 years' experience, we've helped shape one of the world's most exciting, diverse and dynamic cities. We've crafted our portfolio to provide homes for all Londoners, from state-of-the-art apartments and penthouses in Westminster to riverside communities in Fulham, and complex, mixed-use regeneration schemes in Hendon.

Five-star home builder

As part of Barratt Developments PLC, Barratt London is incredibly proud to have been recognised as a market leader for quality. We became the first major nationwide house builder to be awarded the maximum five-star rating, every year since 2009, in the annual Home Builders Federation Customer Satisfaction survey. For our customers, this gives peace of mind that when you buy a Barratt London home, you can be confident you are buying a high-quality home and you will receive unbeatable customer service.

Ten-year NHBC Buildmark Warranty

When you move into a new-build home, you expect everything to be pristine and in working order. With a new Barratt London home you can expect it to stay that way, with the ten-year structural NHBC Buildmark Warranty and a two-year fixtures and fittings warranty.*

On-site property management

Barratt London's on-site property management company, Barratt Residential Asset Management (BRAM), will manage and maintain our developments. This means we take care of all of the communal areas, allowing you total peace of mind when you buy a new Barratt London home.

*First two years covered by Builder Warranty and NHBC Guarantee or similar. Years three-ten covered by NHBC insurance or similar. Full exclusions and limitations can be found on the NHBC website. Available on virtually all of our developments. Your statutory rights are unaffected.

Joint Venture with Metropolitan

The West Hendon Estate regeneration is being delivered by Barratt Metropolitan Limited Liability Partnership (LLP) – a joint venture in which Barratt London is the construction partner and Metropolitan is the affordable housing provider. Barratt Metropolitan LLP supports

and funds the delivery of a range of community projects at West Hendon and in the local area. This includes the new Community Hub, where various initiatives and services are available – such as employment and training workshops, health and wellbeing classes, and activities for young people.



Aldgate Place E1

Camden Courtyards NW1

Lombard Wharf SW11

Greenland Place SE8

Enderby Wharf SE10

The Consumer Code

The Consumer Code for Home Builders ("the Code"), which came into effect in April 2010, applies to all home builders registered with the UK's main new Home Warranty Bodies: NHBC, Premier Guarantee and LABC Warranty.

The Code gives protection and rights to purchasers of new homes. It requires all new home buyers to be treated fairly and ensure they are fully informed about their purchase before and after they sign the contract.

The aim of the Code is for all new home buyers to:

- be treated fairly
- know what levels of service to expect
- be given reliable information about their purchase and their consumer rights before and after they move in
- know how to access speedy, low-cost dispute resolution arrangements to deal with complaints about breaches of the Code.

The Code reinforces best practice among home builders to encourage a consistently high level of information and customer service. It builds on successful efforts already made by the industry to improve consumer satisfaction in recent years.

The Code covers every stage of the home-buying purchase – pre-contract, exchange of contract and during occupation.

As a 5 star housebuilder, we are committed to the Consumer Code for Home Builders. For more information on the Consumer Code for Home Builders, please visit <http://www.consumercode.co.uk/>

**CONSUMER
CODE FOR
HOME BUILDERS**

www.consumercode.co.uk



FIND YOUR PIECE
OF LONDON

+44 (0)844 811 4321

BARRATTLONDON.COM/HENDONWATERSIDE

Computer generated images, maps and development layouts are intended for illustrative purposes and should be treated as general guidance only. The features, designs, materials and visual depictions of and in our Show Apartments and in our Show Apartment photography must be treated as general illustration and guidance. Images may also include upgrades which are available at extra cost. Furniture and furnishings are not included. Fixtures, fittings and specification may be subject to change as necessary and without notice and their accuracy or completeness is not guaranteed. Nor are they intended to form part of any contract or a warranty unless specifically incorporated into the contract. Please ask your Sales Adviser for the current specification. Individual features such as windows, brick and other materials' colours may vary, as may drainage, heating and electrical layouts. Floorplans are intended to give a general indication of the proposed floor layout only. The dimensions are accurate to within + or - 50mm. Dimensions should not be used for carpet or flooring sizes, appliance spaces or items of furniture. Please ask our Sales Adviser for details of the treatments specified for individual plots. Specification may be subject to change as necessary and without notice. Development layouts and landscaping, specification, dimensions and computer generated images are not intended to form part of any contract or warranty unless specifically incorporated in writing into the contract. The development name, Hendon Waterside and building names are for marketing purposes only and may not be the designated postal address, which may be determined by The Post Office. Calls to our 0844 numbers cost 7 pence per minute plus your phone company's access charge. All information in this document is correct to the best of our knowledge at the time of issue August 2017.

