



# WHARF SW11

FLOOR PLANS & SPECIFICATION

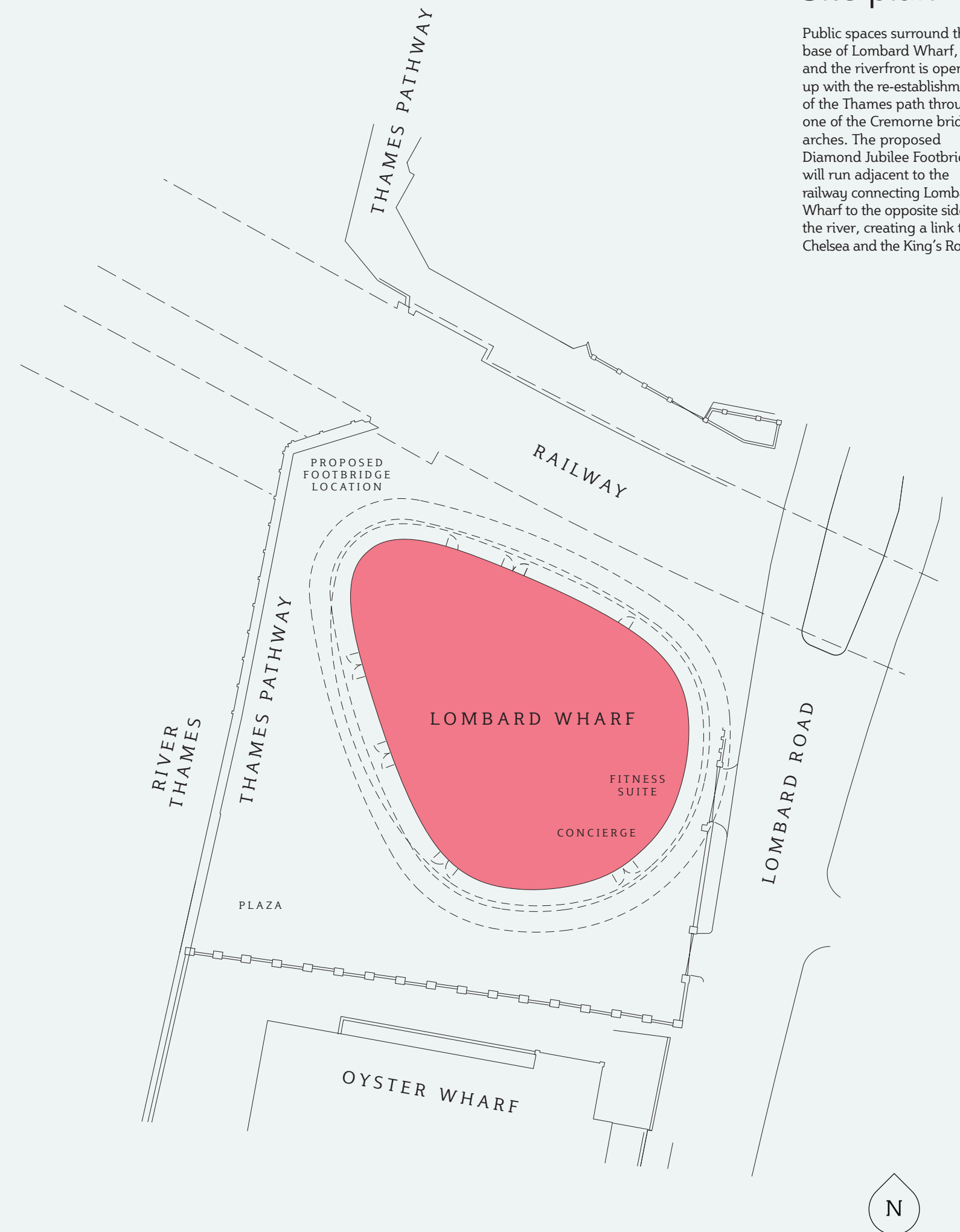
## THE PLANS





## Site plan

Public spaces surround the base of Lombard Wharf, and the riverfront is opened up with the re-establishment of the Thames path through one of the Cremorne bridge arches. The proposed Diamond Jubilee Footbridge will run adjacent to the railway connecting Lombard Wharf to the opposite side of the river, creating a link to Chelsea and the King's Road.







## Plot schedule

PLOT NO.	FLOOR	BEDS	BATHS	TOTAL SQ M	TOTAL SQ FT	ASPECT	PAGE NO.
25	3rd Floor	2	2	91.5	985	SINGLE	17
26	4th Floor	2	2	98.3	1,058	SINGLE	19
27	4th Floor	1	1	51.4	553	SINGLE	19
29	4th Floor	1	1	57.3	617	SINGLE	19
32	4th Floor	2	2	91.5	985	SINGLE	19
33	5th Floor	2	2	96.6	1,040	DUAL	21
34	5th Floor	2	2	81.4	876	DUAL	21
35	5th Floor	2	1	71.6	771	DUAL	21
36	5th Floor	1	1	51.6	555	SINGLE	21
37	5th Floor	3	2	94.3	1,015	DUAL	21
38	6th Floor	2	2	96.6	1,040	DUAL	23
39	6th Floor	2	2	81.4	876	DUAL	23
40	6th Floor	2	1	71.6	771	DUAL	23
41	6th Floor	1	1	51.6	555	SINGLE	23
42	6th Floor	3	2	94.3	1,015	DUAL	23
43	7th Floor	2	2	96.6	1,040	DUAL	25
44	7th Floor	2	2	81.4	876	DUAL	25
45	7th Floor	2	1	71.6	771	DUAL	25
46	7th Floor	1	1	51.6	555	SINGLE	25
47	7th Floor	3	2	94.3	1,015	DUAL	25
48	8th Floor	2	2	96.6	1,040	DUAL	27
49	8th Floor	2	2	81.4	876	DUAL	27
50	8th Floor	2	1	71.6	771	DUAL	27
51	8th Floor	1	1	51.6	555	SINGLE	27
52	8th Floor	3	2	94.3	1,015	DUAL	27
53	9th Floor	2	2	96.6	1,040	DUAL	29
54	9th Floor	2	2	81.4	876	DUAL	29
55	9th Floor	2	1	71.6	771	DUAL	29
56	9th Floor	1	1	51.6	555	SINGLE	29
57	9th Floor	3	2	94.3	1,015	DUAL	29
58	10th Floor	2	2	96.6	1,040	DUAL	31
59	10th Floor	2	2	81.4	876	DUAL	31
60	10th Floor	2	1	71.6	771	DUAL	31
61	10th Floor	1	1	51.6	555	SINGLE	31
62	10th Floor	3	2	94.3	1,015	DUAL	31
63	11th Floor	2	2	96.6	1,040	DUAL	33
64	11th Floor	2	2	81.4	876	DUAL	33
65	11th Floor	2	1	71.6	771	DUAL	33
66	11th Floor	1	1	51.6	555	SINGLE	33
67	11th Floor	3	2	94.3	1,015	DUAL	33



## Plot schedule

PLOT NO.	FLOOR	BEDS	BATHS	TOTAL SQ M	TOTAL SQ FT	ASPECT	PAGE NO.
68	12th Floor	2	2	96.6	1,040	DUAL	35
69	12th Floor	2	2	81.4	876	DUAL	35
70	12th Floor	2	1	71.6	771	DUAL	35
71	12th Floor	1	1	51.6	555	SINGLE	35
72	12th Floor	3	2	94.3	1,015	DUAL	35
73	13th Floor	2	2	96.6	1,040	DUAL	37
74	13th Floor	2	2	81.4	876	DUAL	37
75	13th Floor	2	1	71.6	771	DUAL	37
76	13th Floor	1	1	51.6	555	SINGLE	37
77	13th Floor	3	2	94.3	1,015	DUAL	37
78	14th Floor	2	2	96.6	1,040	DUAL	39
79	14th Floor	2	2	81.4	876	DUAL	39
80	14th Floor	2	2	71.8	773	DUAL	39
81	14th Floor	1	1	51.6	555	SINGLE	39
82	14th Floor	3	2	94.3	1,015	DUAL	39
83	15th Floor	2	2	96.6	1,040	DUAL	41
84	15th Floor	2	2	81.4	876	DUAL	41
85	15th Floor	2	2	71.8	773	DUAL	41
86	15th Floor	1	1	51.6	555	SINGLE	41
87	15th Floor	3	2	94.3	1,015	DUAL	41
88	16th Floor	2	2	96.6	1,040	DUAL	43
89	16th Floor	2	2	81.4	876	DUAL	43
90	16th Floor	2	2	71.8	773	DUAL	43
91	16th Floor	1	1	51.6	555	SINGLE	43
92	16th Floor	3	2	94.3	1,015	DUAL	43
93	17th Floor	2	2	96.6	1,040	DUAL	45
94	17th Floor	2	2	81.4	876	DUAL	45
95	17th Floor	2	2	71.8	773	DUAL	45
96	17th Floor	1	1	51.6	555	SINGLE	45
97	17th Floor	3	2	94.3	1,015	DUAL	45
98	18th Floor	2	2	96.6	1,040	DUAL	47
99	18th Floor	2	2	81.4	876	DUAL	47
100	18th Floor	2	2	71.8	773	DUAL	47
101	18th Floor	1	1	51.6	555	SINGLE	47
102	18th Floor	3	2	94.3	1,015	DUAL	47
103	19th Floor	2	2	96.6	1,040	DUAL	49
104	19th Floor	2	2	81.4	876	DUAL	49
105	19th Floor	2	2	71.8	773	DUAL	49
106	19th Floor	1	1	51.6	555	SINGLE	49
107	19th Floor	3	2	94.3	1,015	DUAL	49

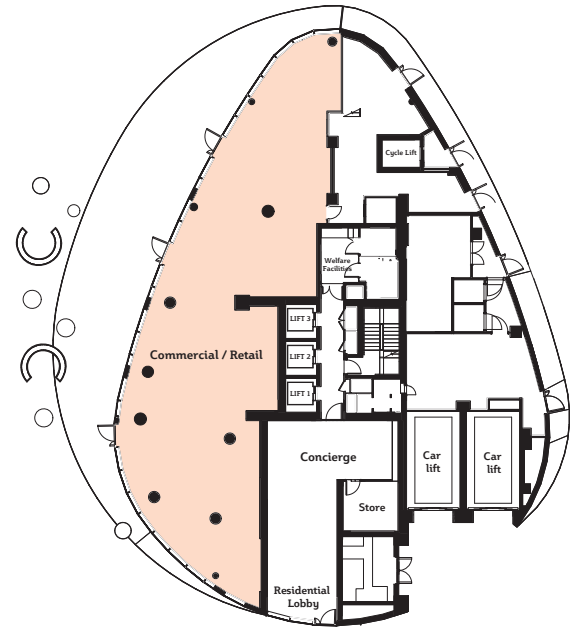
## Plot schedule

PLOT NO.	FLOOR	BEDS	BATHS	TOTAL SQ M	TOTAL SQ FT	ASPECT	PAGE NO.
108	20th Floor	2	2	96.6	1,040	DUAL	51
109	20th Floor	2	2	81.4	876	DUAL	51
110	20th Floor	2	2	71.8	773	DUAL	51
111	20th Floor	1	1	51.6	555	SINGLE	51
112	20th Floor	3	2	94.3	1,015	DUAL	51
113	21st Floor	2	2	96.6	1,040	DUAL	53
114	21st Floor	2	2	81.4	876	DUAL	53
115	21st Floor	2	2	71.8	773	DUAL	53
116	21st Floor	1	1	51.6	555	SINGLE	53
117	21st Floor	3	2	94.3	1,015	DUAL	53
118	22nd Floor	2	2	96.6	1,040	DUAL	51
119	22nd Floor	2	2	81.4	876	DUAL	51
120	22nd Floor	2	2	71.8	773	DUAL	51
121	22nd Floor	1	1	51.6	555	SINGLE	51
122	22nd Floor	3	2	94.3	1,015	DUAL	51
123	23rd Floor	2	2	96.6	1,040	DUAL	49
124	23rd Floor	2	2	81.4	876	DUAL	49
125	23rd Floor	2	2	71.8	773	DUAL	49
126	23rd Floor	1	1	51.6	555	SINGLE	49
127	23rd Floor	3	2	94.3	1,015	DUAL	49
128	24th Floor	2	2	96.6	1,040	DUAL	47
129	24th Floor	2	2	81.4	876	DUAL	47
130	24th Floor	2	2	71.8	773	DUAL	47
131	24th Floor	1	1	51.6	555	SINGLE	47
132	24th Floor	3	2	94.3	1,015	DUAL	47
133	25th Floor	3	TBC	TBC	TBC	360°	
134	26th Floor	3	TBC	TBC	TBC	360°	

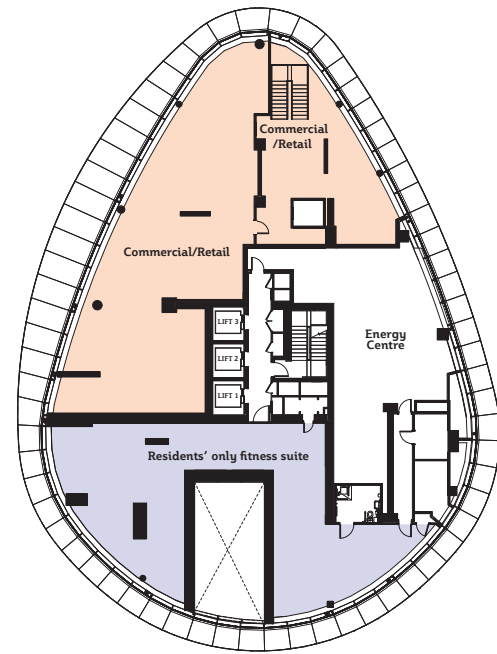


# Lombard Wharf floor plates

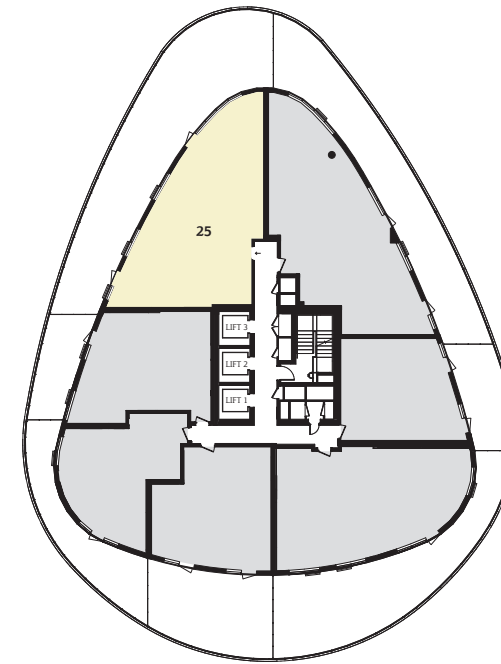
Ground Floor



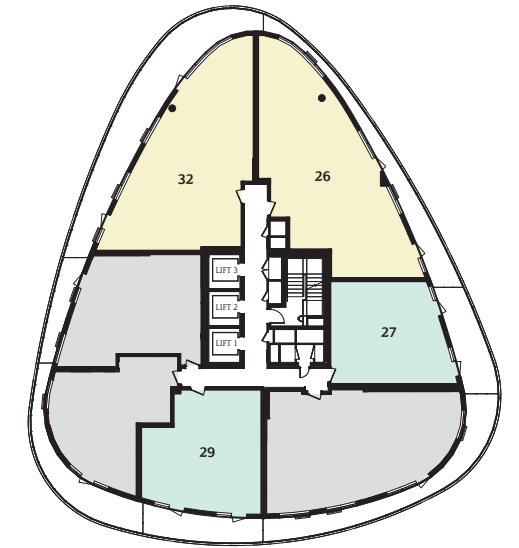
Mezzanine



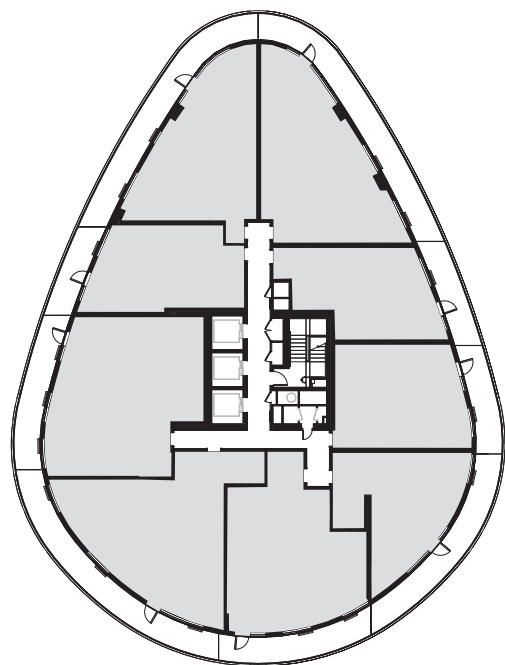
Floor 3



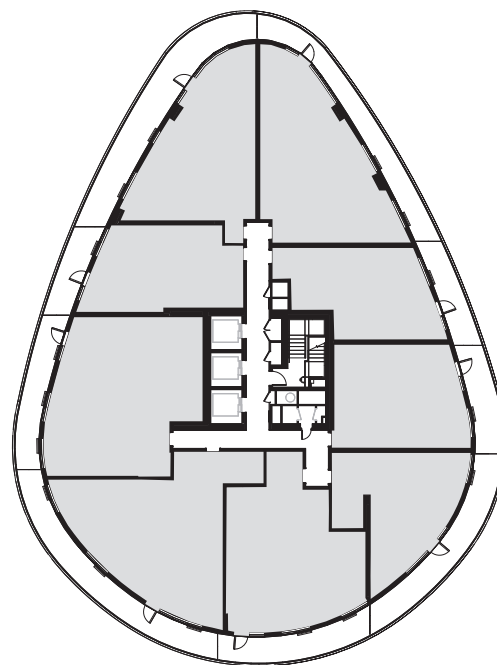
Floor 4



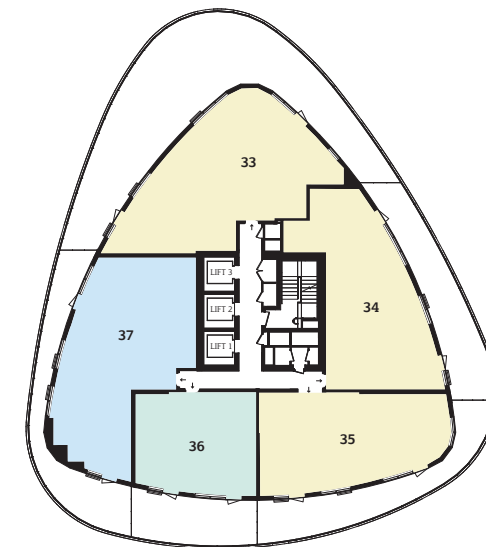
Floor 1



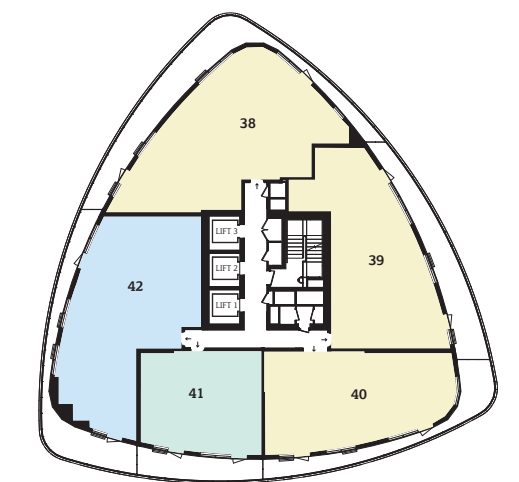
Floor 2



Floor 5



Floor 6

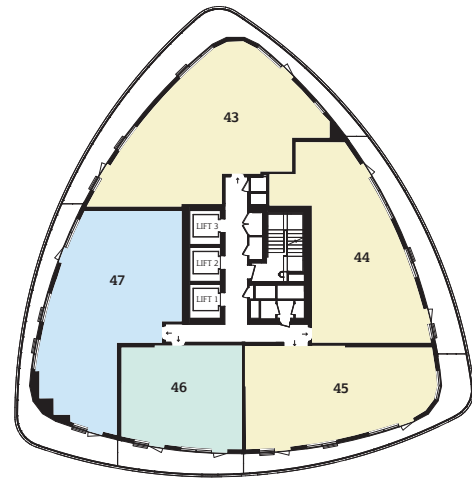


- Residents' only fitness suite
- Commercial / Retail
- Shared ownership
- One-bedroom apartments
- Two-bedroom apartments
- Three-bedroom apartments

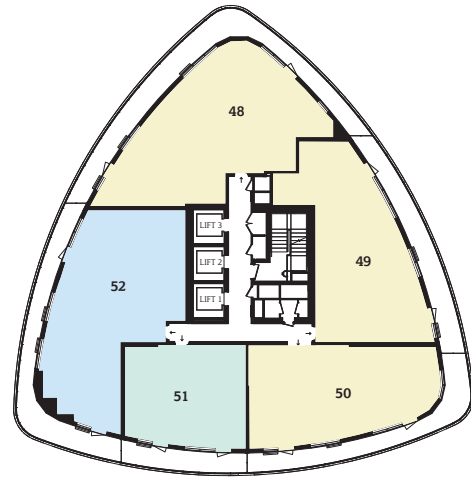


# Lombard Wharf floor plates

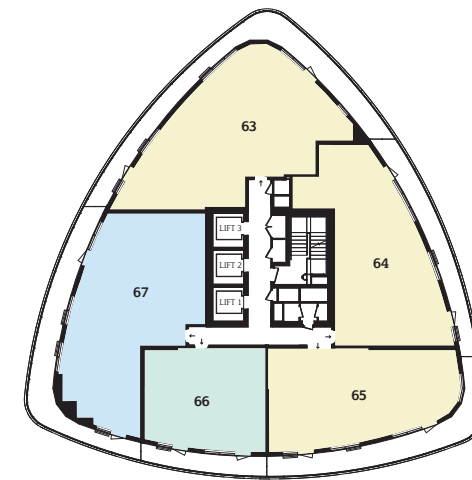
Floor 7



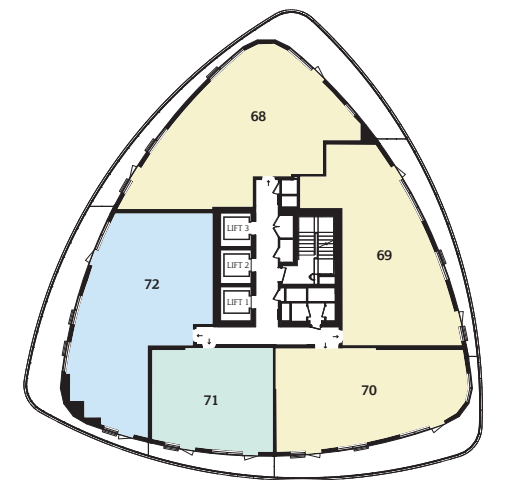
Floor 8



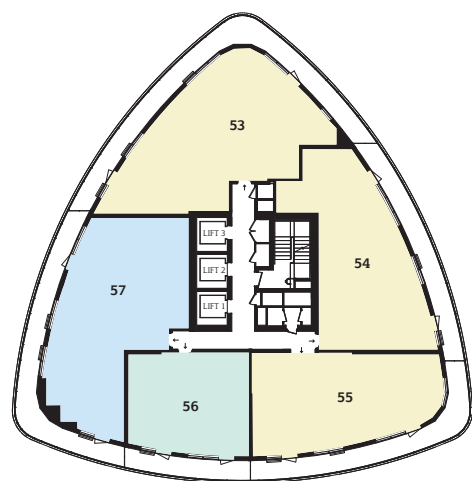
Floor 11



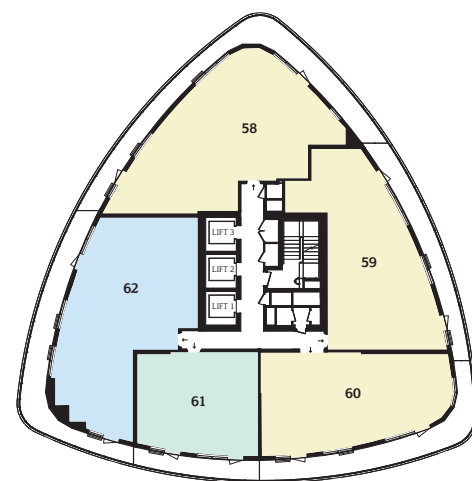
Floor 12



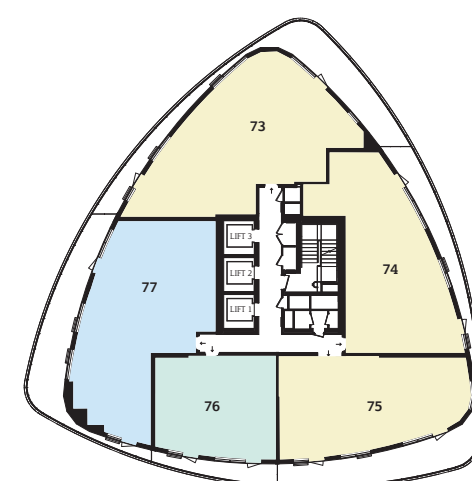
Floor 9



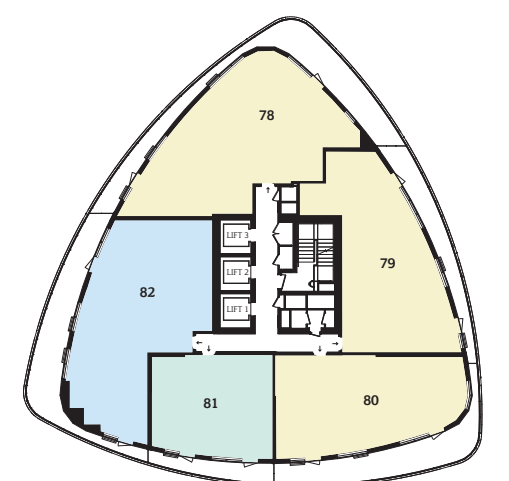
Floor 10



Floor 13



Floor 14

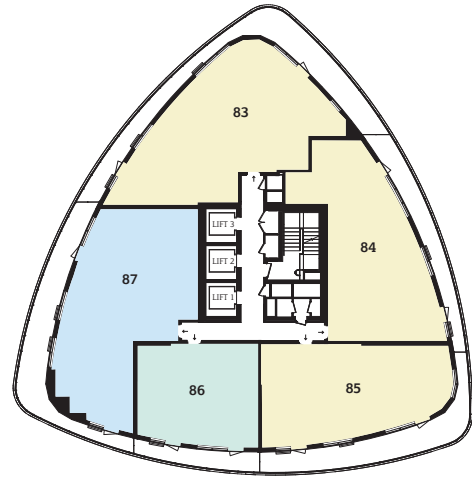


- One-bedroom apartments
- Two-bedroom apartments
- Three-bedroom apartments

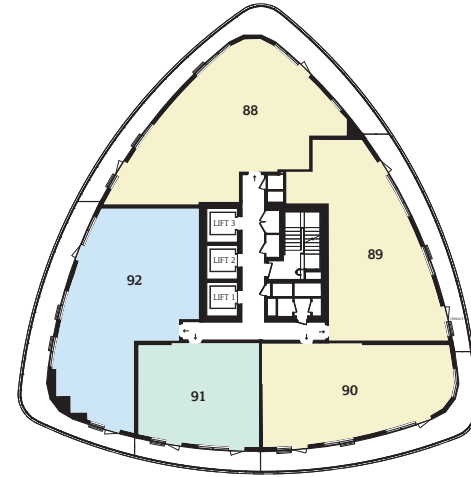


# Lombard Wharf floor plates

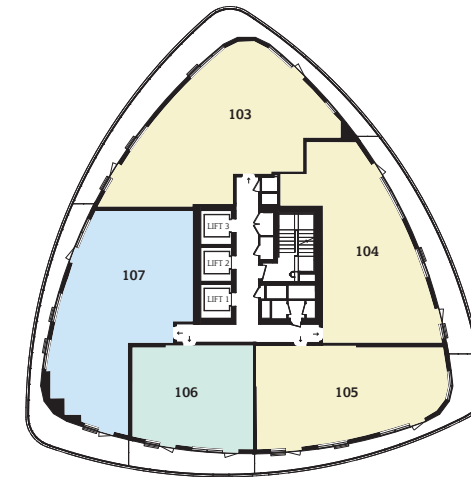
Floor 15



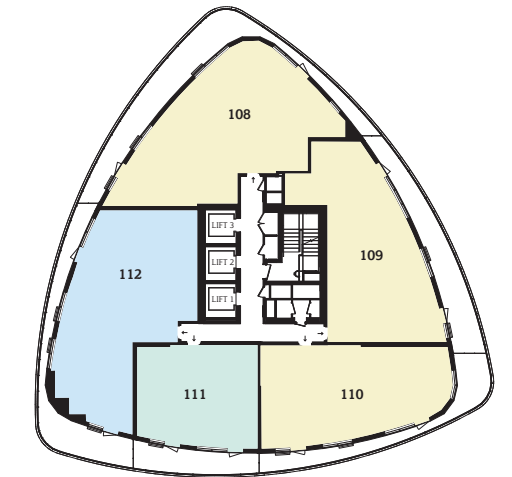
Floor 16



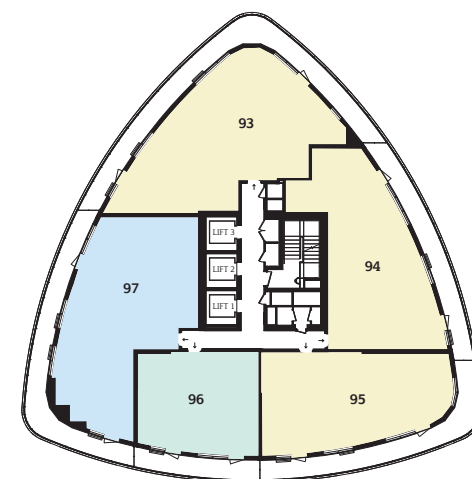
Floor 19



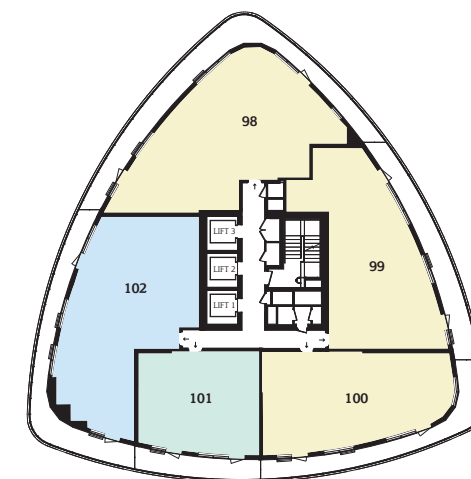
Floor 20



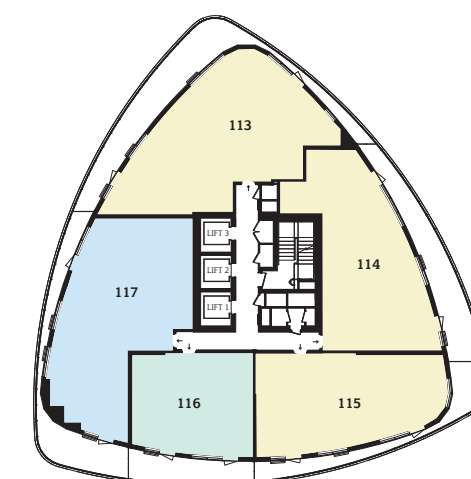
Floor 17



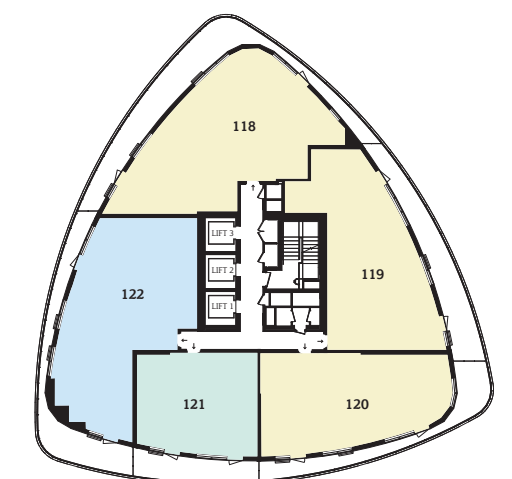
Floor 18



Floor 21



Floor 22

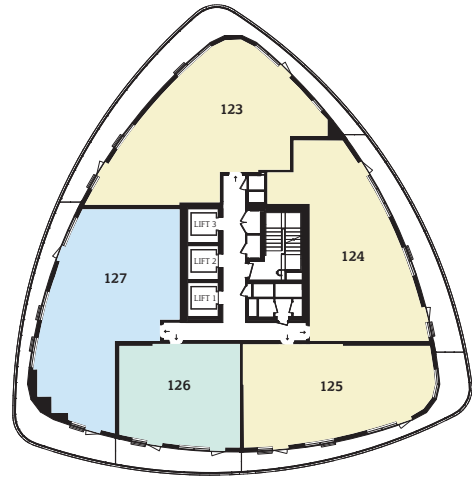


- One-bedroom apartments
- Two-bedroom apartments
- Three-bedroom apartments

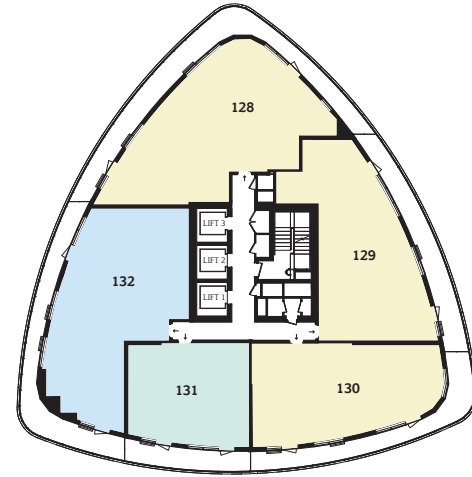


# Lombard Wharf floor plates

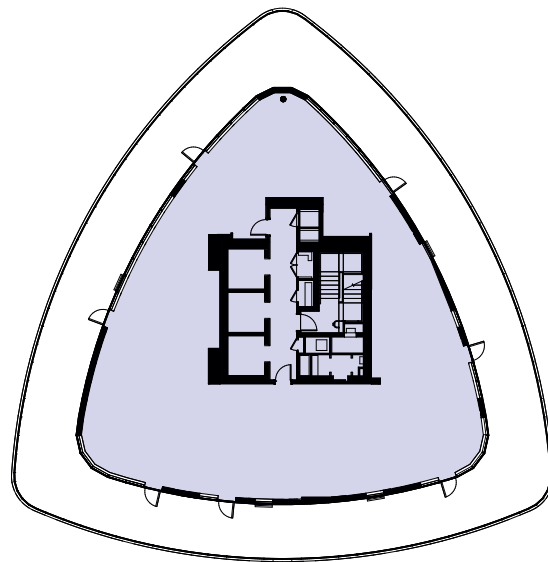
Floor 23



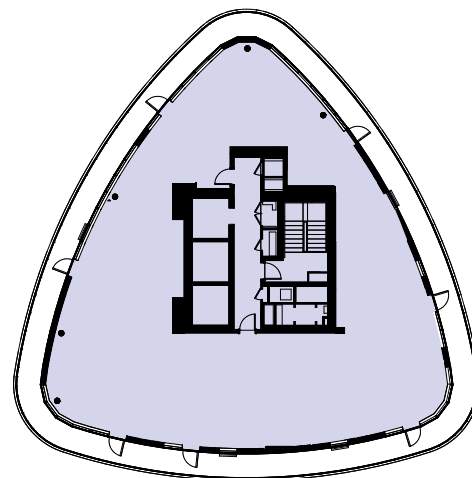
Floor 24



Floor 25



Floor 26



- One-bedroom apartments
- Three-bedroom apartments
- Two-bedroom apartments
- Three-bedroom penthouses

Penthouse layouts are indicative only and subject to change.

Residential entrance  
and concierge \\\



Computer generated image is indicative only.



# Floor 3



## Plot 25

**Living/Dining**  
19'4" x 14'1" (5900 x 4300mm)

**Kitchen**  
11'10" x 6'7" (3600 x 2000mm)

**Bedroom 1**  
21'0" x 9'2" (6400 x 2800mm)

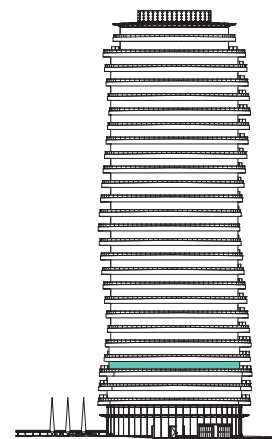
**Bedroom 2**  
14'1" x 9'2" (4300 x 2800mm)

**TOTAL AREA**  
985 sq ft (91.5 sq m)

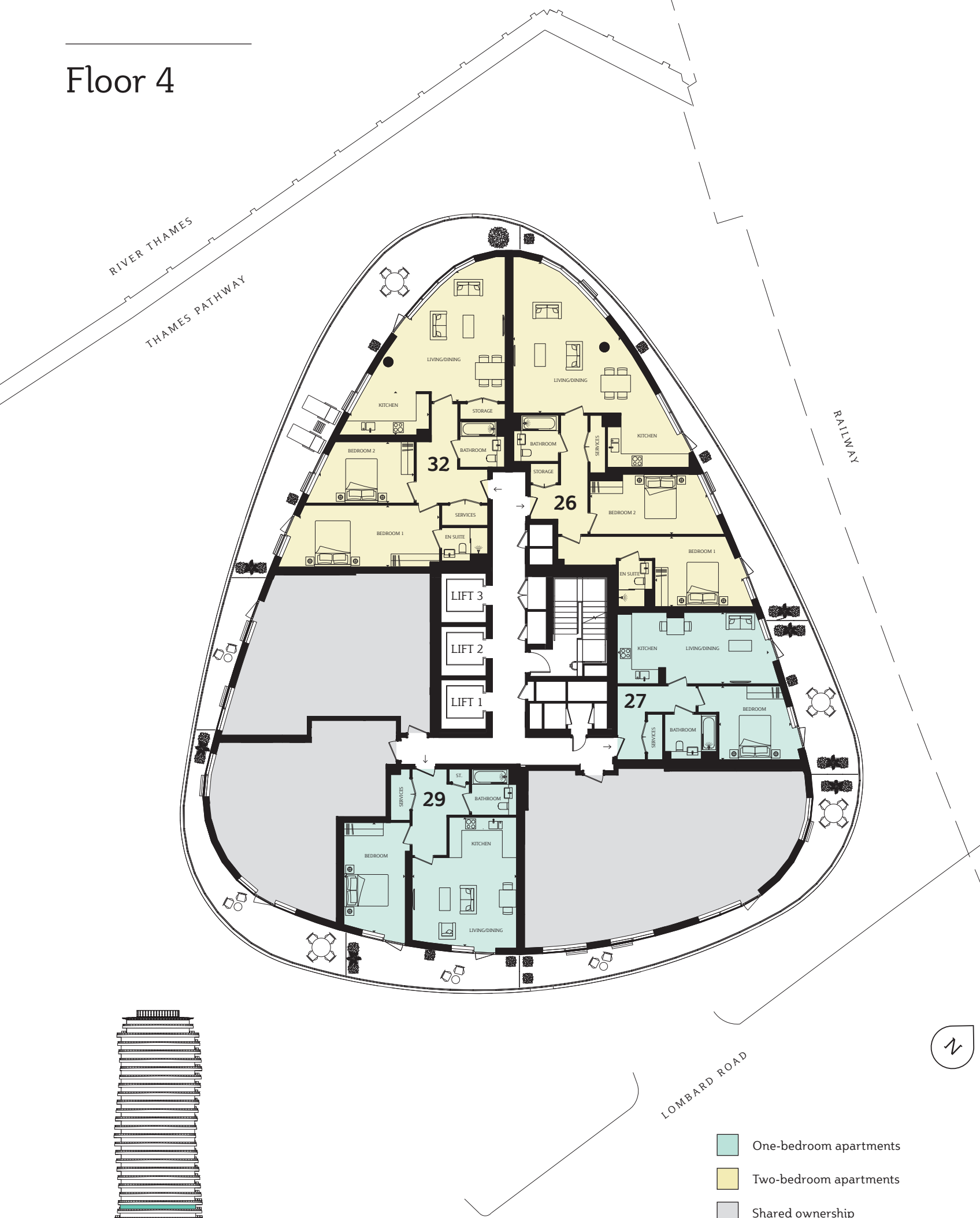
**Terrace**  
1060.87 sq ft (98.56 sq m)

Two-bedroom apartments

Shared ownership



# Floor 4



## Plot 26

**Living/Dining**  
22'8" x 15'9" (6900 x 4800mm)

**Kitchen**  
10'2" x 8'2" (3100 x 2500mm)

**Bedroom 1**  
13'1" x 10'6" (4000 x 3200mm)

**Bedroom 2**  
17'5" x 9'0" (5300 x 2750mm)

**TOTAL AREA**  
1058 sq ft (98.3 sq m)

**Terrace**  
240.67 sq ft (22.36 sq m)

## Plot 29

**Living/Dining/Kitchen**  
19'4" x 15'9" (5900 x 4800)

**Bedroom 1**  
16'5" x 9'2" (5000 x 2800mm)

**TOTAL AREA**  
617 sq ft (57.3 sq m)

**Terrace**  
148.87 sq ft (13.83 sq m)

## Plot 27

**Living/Dining/Kitchen**  
22'8" x 10'10" (6900 x 3300mm)

**Bedroom 1**  
10'10" x 10'10" (3300 x 3300mm)

**TOTAL AREA**  
553 sq ft (51.4 sq m)

**Terrace**  
169.19 sq ft (15.72 sq m)

## Plot 32

**Living/Dining**  
19'4" x 14'1" (5900 x 4300mm)

**Kitchen**  
11'10" x 6'7" (3600 x 2000mm)

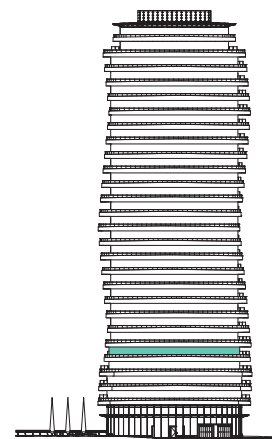
**Bedroom 1**  
21'0" x 9'2" (6400 x 2800mm)

**Bedroom 2**  
14'1" x 9'2" (4300 x 2800mm)

**TOTAL AREA**  
985 sq ft (91.5 sq m)

**Terrace**  
479.73 sq ft (44.57 sq m)

- One-bedroom apartments
- Two-bedroom apartments
- Shared ownership





# Floor 5



## Plot 33

**Living**  
17'9" x 11'6" (5400 x 3500mm)

**Kitchen/Dining**  
17'1" x 13'9" (5200 x 4200mm)

**Bedroom 1**  
19'0" x 9'2" (5800 x 2800mm)

**Bedroom 2**  
14'9" x 9'0" (4500 x 2750mm)

**TOTAL AREA**  
1040 sq ft (96.6 sq m)

**Terrace**  
1256.26 sq ft (116.71 sq m)

## Plot 34

**Living/Dining/Kitchen**  
23'0" x 19'8" (7000 x 6000mm)

**Bedroom 1**  
12'2" x 10'10" (3700 x 3300mm)

**Bedroom 2**  
10'10" x 9'10" (3300 x 3000mm)

**TOTAL AREA**  
876 sq ft (81.4 sq m)

**Terrace**  
429.05 sq ft (39.86 sq m)

## Plot 35

**Living/Dining/Kitchen**  
18'1" x 16'9" (5500 x 5100mm)

**Bedroom 1**  
13'1" x 11'10" (4000 x 3600mm)

**Bedroom 2**  
11'6" x 8'10" (3500 x 2700mm)

**TOTAL AREA**  
771 sq ft (71.6 sq m)

**Terrace**  
423.41 sq ft (39.34 sq m)

## Plot 36

**Living/Dining/Kitchen**  
22'0" x 15'9" (6700 x 4800mm)

**Bedroom 1**  
13'1" x 9'2" (4000 x 2800mm)

**TOTAL AREA**  
555 sq ft (51.6 sq m)

**Terrace**  
284.18 sq ft (26.4 sq m)

## Plot 37

**Living/Dining/Kitchen**  
24'7" x 16'1" (7500 x 4900mm)

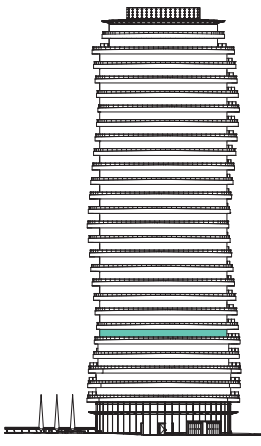
**Bedroom 1**  
12'2" x 9'10" (3700 x 3000mm)

**Bedroom 2**  
14'5" x 9'2" (4400 x 2800mm)

**Bedroom 3**  
12'6" x 9'4" (3800 x 2850mm)

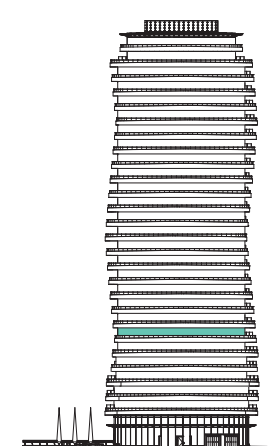
**TOTAL AREA**  
1015 sq ft (94.3 sq m)

**Terrace**  
413.02 sq ft (38.37 sq m)



- One-bedroom apartments
- Two-bedroom apartments
- Three-bedroom apartments

# Floor 6



- One-bedroom apartments
- Two-bedroom apartments
- Three-bedroom apartments

## Plot 38

**Living**  
17'9" x 11'6" (5400 x 3500mm)

**Kitchen/Dining**  
17'1" x 13'9" (5200 x 4200mm)

**Bedroom 1**  
19'0" x 9'2" (5800 x 2800mm)

**Bedroom 2**  
14'9" x 9'0" (4500 x 2750mm)

**TOTAL AREA**  
1040 sq ft (96.6 sq m)

**Terrace**  
410.04 sq ft (38.09 sq m)

## Plot 39

**Living/Dining/Kitchen**  
23'0" x 19'8" (7000 x 6000mm)

**Bedroom 1**  
12'2" x 10'10" (3700 x 3300mm)

**Bedroom 2**  
10'10" x 9'10" (3300 x 3000mm)

**TOTAL AREA**  
876 sq ft (81.4 sq m)

**Terrace**  
275.64 sq ft (25.61 sq m)

## Plot 40

**Living/Dining/Kitchen**  
18'1" x 16'9" (5500 x 5100mm)

**Bedroom 1**  
13'1" x 11'10" (4000 x 3600mm)

**Bedroom 2**  
11'6" x 8'10" (3500 x 2700mm)

**TOTAL AREA**  
771 sq ft (71.6 sq m)

**Terrace**  
220.16 sq ft (20.45 sq m)

## Plot 41

**Living/Dining/Kitchen**  
22'0" x 15'9" (6700 x 4800mm)

**Bedroom 1**  
13'1" x 9'2" (4000 x 2800mm)

**TOTAL AREA**  
555 sq ft (51.6 sq m)

**Terrace**  
144.46 sq ft (13.42 sq m)

## Plot 42

**Living/Dining/Kitchen**  
24'7" x 16'1" (7500 x 4900mm)

**Bedroom 1**  
12'2" x 9'10" (3700 x 3000mm)

**Bedroom 2**  
14'5" x 9'2" (4400 x 2800mm)

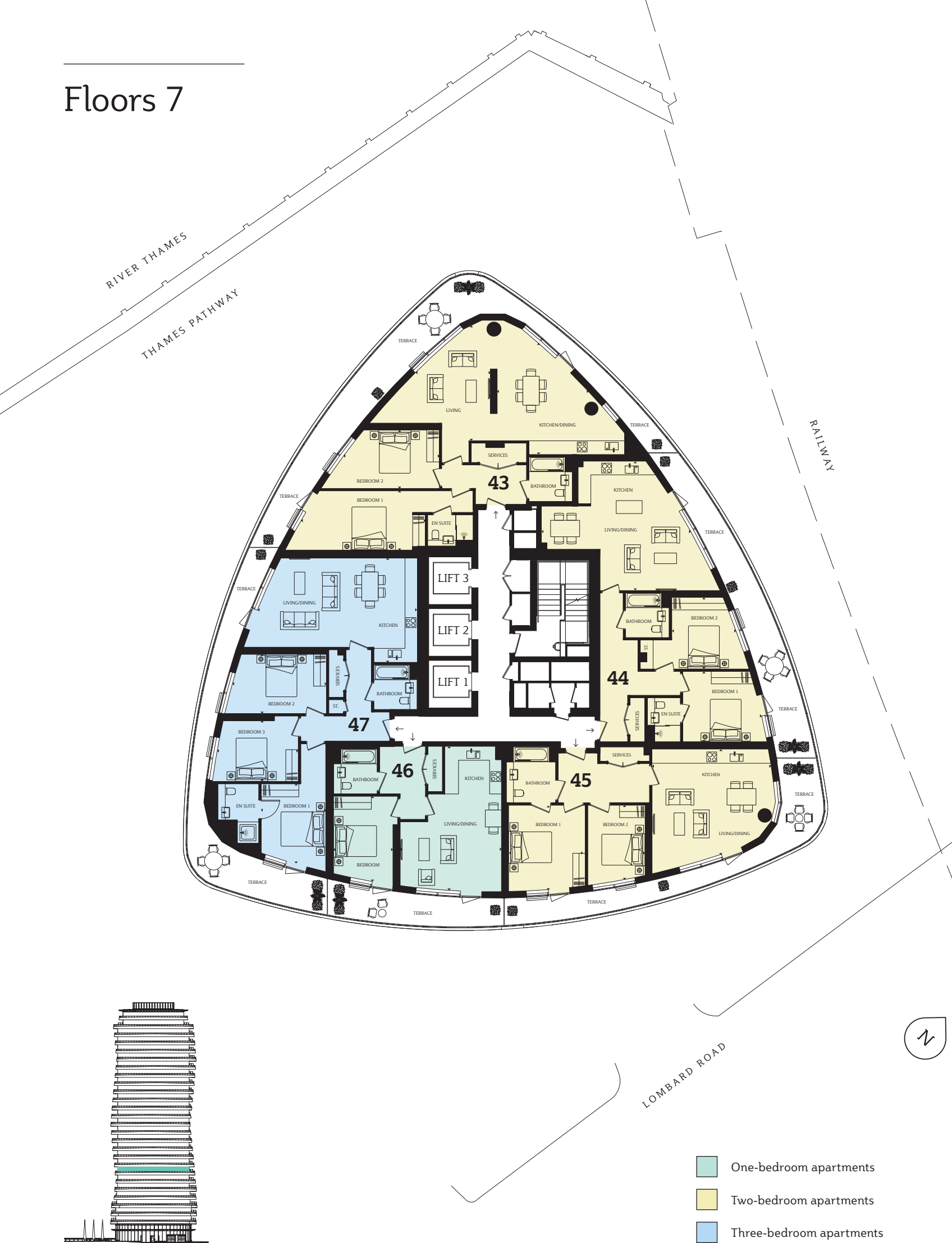
**Bedroom 3**  
12'6" x 9'4" (3800 x 2850mm)

**TOTAL AREA**  
1015 sq ft (94.3 sq m)

**Terrace**  
275.34 sq ft (25.58 sq m)



# Floors 7



## Plot 43

**Living**  
17'9" x 11'6" (5400 x 3500mm)

**Kitchen/Dining**  
17'1" x 13'9" (5200 x 4200mm)

**Bedroom 1**  
19'0" x 9'2" (5800 x 2800mm)

**Bedroom 2**  
14'9" x 9'0" (4500 x 2750mm)

**TOTAL AREA**  
1040 sq ft (96.6 sq m)

**Terrace**  
409.02 sq ft (38 sq m)

## Plot 44

**Living/Dining/Kitchen**  
23'0" x 19'8" (7000 x 6000mm)

**Bedroom 1**  
12'2" x 10'10" (3700 x 3300mm)

**Bedroom 2**  
10'10" x 9'10" (3300 x 3000mm)

**TOTAL AREA**  
876 sq ft (81.4 sq m)

**Terrace**  
256.14 sq ft (23.8 sq m)

## Plot 45

**Living/Dining/Kitchen**  
18'1" x 16'9" (5500 x 5100mm)

**Bedroom 1**  
13'1" x 11'10" (4000 x 3600mm)

**Bedroom 2**  
11'6" x 8'10" (3500 x 2700mm)

**TOTAL AREA**  
771 sq ft (71.6 sq m)

**Terrace**  
237.32 sq ft (22.05 sq m)

## Plot 46

**Living/Dining/Kitchen**  
22'0" x 15'9" (6700 x 4800mm)

**Bedroom 1**  
13'1" x 9'2" (4000 x 2800mm)

**TOTAL AREA**  
555 sq ft (51.6 sq m)

**Terrace**  
135.09 sq ft (12.55 sq m)

## Plot 47

**Living/Dining/Kitchen**  
24'7" x 16'1" (7500 x 4900mm)

**Bedroom 1**  
12'2" x 9'10" (3700 x 3000mm)

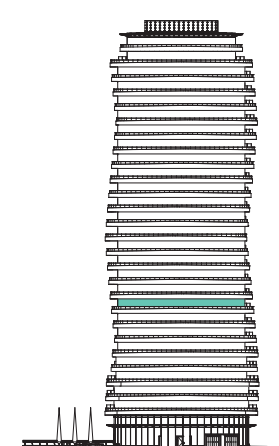
**Bedroom 2**  
14'5" x 9'2" (4400 x 2800mm)

**Bedroom 3**  
12'6" x 9'4" (3800 x 2850mm)

**TOTAL AREA**  
1015 sq ft (94.3 sq m)

**Terrace**  
288.28 sq ft (26.76 sq m)

# Floors 8



- One-bedroom apartments
- Two-bedroom apartments
- Three-bedroom apartments

## Plot 48

**Living**  
17'9" x 11'6" (5400 x 3500mm)

**Kitchen/Dining**  
17'1" x 13'9" (5200 x 4200mm)

**Bedroom 1**  
19'0" x 9'2" (5800 x 2800mm)

**Bedroom 2**  
14'9" x 9'0" (4500 x 2750mm)

**TOTAL AREA**  
1040 sq ft (96.6 sq m)

**Terrace**  
407.75 sq ft (37.88 sq m)

## Plot 49

**Living/Dining/Kitchen**  
23'0" x 19'8" (7000 x 6000mm)

**Bedroom 1**  
12'2" x 10'10" (3700 x 3300mm)

**Bedroom 2**  
10'10" x 9'10" (3300 x 3000mm)

**TOTAL AREA**  
876 sq ft (81.4 sq m)

**Terrace**  
238.38 sq ft (22.15 sq m)

## Plot 50

**Living/Dining/Kitchen**  
18'1" x 16'9" (5500 x 5100mm)

**Bedroom 1**  
13'1" x 11'10" (4000 x 3600mm)

**Bedroom 2**  
11'6" x 8'10" (3500 x 2700mm)

**TOTAL AREA**  
771 sq ft (71.6 sq m)

**Terrace**  
253.04 sq ft (23.51 sq m)

## Plot 51

**Living/Dining/Kitchen**  
22'0" x 15'9" (6700 x 4800mm)

**Bedroom 1**  
13'1" x 9'2" (4000 x 2800mm)

**TOTAL AREA**  
555 sq ft (51.6 sq m)

**Terrace**  
126.6 sq ft (11.76 sq m)

## Plot 52

**Living/Dining/Kitchen**  
24'7" x 16'1" (7500 x 4900mm)

**Bedroom 1**  
12'2" x 9'10" (3700 x 3000mm)

**Bedroom 2**  
14'5" x 9'2" (4400 x 2800mm)

**Bedroom 3**  
12'6" x 9'4" (3800 x 2850mm)

**TOTAL AREA**  
1015 sq ft (94.3 sq m)

**Terrace**  
300.26 sq ft (27.89 sq m)



# Floors 9



- One-bedroom apartments
- Two-bedroom apartments
- Three-bedroom apartments

## Plot 53

**Living**  
17'9" x 11'6" (5400 x 3500mm)

**Kitchen/Dining**  
17'1" x 13'9" (5200 x 4200mm)

**Bedroom 1**  
19'0" x 9'2" (5800 x 2800mm)

**Bedroom 2**  
14'9" x 9'0" (4500 x 2750mm)

**TOTAL AREA**  
1040 sq ft (96.6 sq m)

**Terrace**  
406.28 sq ft (37.88 sq m)

## Plot 54

**Living/Dining/Kitchen**  
23'0" x 19'8" (7000 x 6000mm)

**Bedroom 1**  
12'2" x 10'10" (3700 x 3300mm)

**Bedroom 2**  
10'10" x 9'10" (3300 x 3000mm)

**TOTAL AREA**  
876 sq ft (81.4 sq m)

**Terrace**  
222.54 sq ft (20.68 sq m)

## Plot 55

**Living/Dining/Kitchen**  
18'1" x 16'9" (5500 x 5100mm)

**Bedroom 1**  
13'1" x 11'10" (4000 x 3600mm)

**Bedroom 2**  
11'6" x 8'10" (3500 x 2700mm)

**TOTAL AREA**  
771 sq ft (71.6 sq m)

**Terrace**  
267.14 sq ft (24.82 sq m)

## Plot 56

**Living/Dining/Kitchen**  
22'0" x 15'9" (6700 x 4800mm)

**Bedroom 1**  
13'1" x 9'2" (4000 x 2800mm)

**TOTAL AREA**  
555 sq ft (51.6 sq m)

**Terrace**  
118.97 sq ft (11.05 sq m)

## Plot 57

**Living/Dining/Kitchen**  
24'7" x 16'1" (7500 x 4900mm)

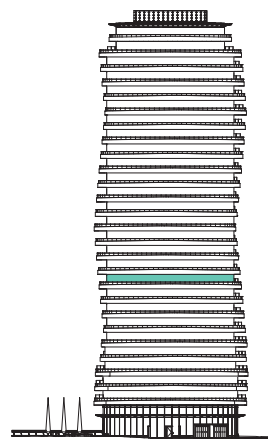
**Bedroom 1**  
12'2" x 9'10" (3700 x 3000mm)

**Bedroom 2**  
14'5" x 9'2" (4400 x 2800mm)

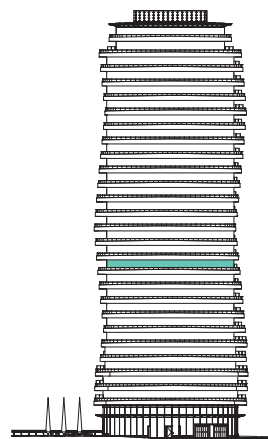
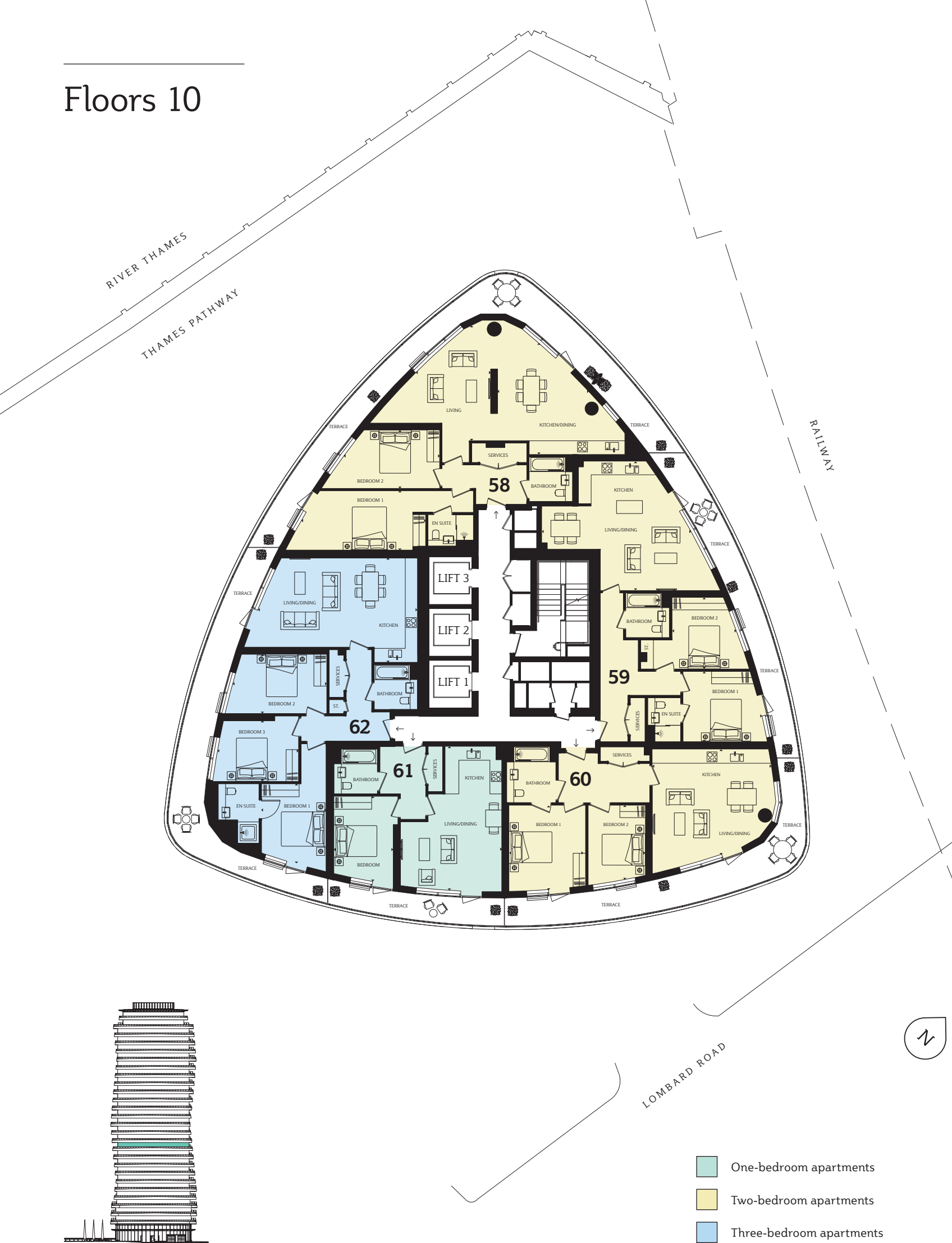
**Bedroom 3**  
12'6" x 9'4" (3800 x 2850mm)

**TOTAL AREA**  
1015 sq ft (94.3 sq m)

**Terrace**  
311.26 sq ft (28.92 sq m)



# Floors 10



- One-bedroom apartments
- Two-bedroom apartments
- Three-bedroom apartments

## Plot 58

**Living**  
17'9" x 11'6" (5400 x 3500mm)

**Kitchen/Dining**  
17'1" x 13'9" (5200 x 4200mm)

**Bedroom 1**  
19'0" x 9'2" (5800 x 2800mm)

**Bedroom 2**  
14'9" x 9'0" (4500 x 2750mm)

**TOTAL AREA**  
1040 sq ft (96.6 sq m)

**Terrace**  
404.58 sq ft (37.59 sq m)

## Plot 59

**Living/Dining/Kitchen**  
23'0" x 19'8" (7000 x 6000mm)

**Bedroom 1**  
12'2" x 10'10" (3700 x 3300mm)

**Bedroom 2**  
10'10" x 9'10" (3300 x 3000mm)

**TOTAL AREA**  
876 sq ft (81.4 sq m)

**Terrace**  
208.54 sq ft (19.37 sq m)

## Plot 60

**Living/Dining/Kitchen**  
18'1" x 16'9" (5500 x 5100mm)

**Bedroom 1**  
13'1" x 11'10" (4000 x 3600mm)

**Bedroom 2**  
11'6" x 8'10" (3500 x 2700mm)

**TOTAL AREA**  
771 sq ft (71.6 sq m)

**Terrace**  
279.71 sq ft (25.99 sq m)

## Plot 61

**Living/Dining/Kitchen**  
22'0" x 15'9" (6700 x 4800mm)

**Bedroom 1**  
13'1" x 9'2" (4000 x 2800mm)

**TOTAL AREA**  
555 sq ft (51.6 sq m)

**Terrace**  
112.2 sq ft (10.42 sq m)

## Plot 62

**Living/Dining/Kitchen**  
24'7" x 16'1" (7500 x 4900mm)

**Bedroom 1**  
12'2" x 9'10" (3700 x 3000mm)

**Bedroom 2**  
14'5" x 9'2" (4400 x 2800mm)

**Bedroom 3**  
12'6" x 9'4" (3800 x 2850mm)

**TOTAL AREA**  
1015 sq ft (94.3 sq m)

**Terrace**  
321.31 sq ft (29.85 sq m)



# Floors 11



- One-bedroom apartments
- Two-bedroom apartments
- Three-bedroom apartments

## Plot 63

**Living**  
17'9" x 11'6" (5400 x 3500mm)

**Kitchen/Dining**  
17'1" x 13'9" (5200 x 4200mm)

**Bedroom 1**  
19'0" x 9'2" (5800 x 2800mm)

**Bedroom 2**  
14'9" x 9'0" (4500 x 2750mm)

**TOTAL AREA**  
1040 sq ft (96.6 sq m)

**Terrace**  
402.71 sq ft (37.41 sq m)

## Plot 64

**Living/Dining/Kitchen**  
23'0" x 19'8" (7000 x 6000mm)

**Bedroom 1**  
12'2" x 10'10" (3700 x 3300mm)

**Bedroom 2**  
10'10" x 9'10" (3300 x 3000mm)

**TOTAL AREA**  
876 sq ft (81.4 sq m)

**Terrace**  
196.25 sq ft (18.23 sq m)

## Plot 65

**Living/Dining/Kitchen**  
18'1" x 16'9" (5500 x 5100mm)

**Bedroom 1**  
13'1" x 11'10" (4000 x 3600mm)

**Bedroom 2**  
11'6" x 8'10" (3500 x 2700mm)

**TOTAL AREA**  
771 sq ft (71.6 sq m)

**Terrace**  
289.58 sq ft (26.9 sq m)

## Plot 66

**Living/Dining/Kitchen**  
22'0" x 15'9" (6700 x 4800mm)

**Bedroom 1**  
13'1" x 9'2" (4000 x 2800mm)

**TOTAL AREA**  
555 sq ft (51.6 sq m)

**Terrace**  
106.29 sq ft (9.87 sq m)

## Plot 67

**Living/Dining/Kitchen**  
24'7" x 16'1" (7500 x 4900mm)

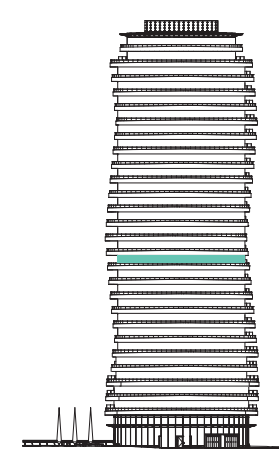
**Bedroom 1**  
12'2" x 9'10" (3700 x 3000mm)

**Bedroom 2**  
14'5" x 9'2" (4400 x 2800mm)

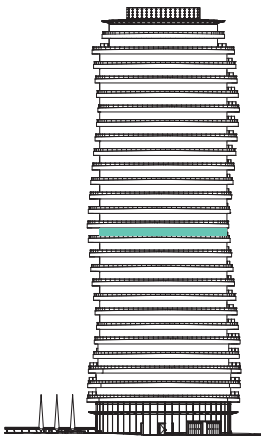
**Bedroom 3**  
12'6" x 9'4" (3800 x 2850mm)

**TOTAL AREA**  
1015 sq ft (94.3 sq m)

**Terrace**  
330.4 sq ft (30.7 sq m)



# Floors 12



- One-bedroom apartments
- Two-bedroom apartments
- Three-bedroom apartments

## Plot 68

**Living**  
17'9" x 11'6" (5400 x 3500mm)

**Kitchen/Dining**  
17'1" x 13'9" (5200 x 4200mm)

**Bedroom 1**  
19'0" x 9'2" (5800 x 2800mm)

**Bedroom 2**  
14'9" x 9'0" (4500 x 2750mm)

**TOTAL AREA**  
1040 sq ft (96.6 sq m)

**Terrace**  
400.66 sq ft (37.22 sq m)

## Plot 69

**Living/Dining/Kitchen**  
23'0" x 19'8" (7000 x 6000mm)

**Bedroom 1**  
12'2" x 10'10" (3700 x 3300mm)

**Bedroom 2**  
10'10" x 9'10" (3300 x 3000mm)

**TOTAL AREA**  
876 sq ft (81.4 sq m)

**Terrace**  
185.69 sq ft (17.25 sq m)

## Plot 70

**Living/Dining/Kitchen**  
18'1" x 16'9" (5500 x 5100mm)

**Bedroom 1**  
13'1" x 11'10" (4000 x 3600mm)

**Bedroom 2**  
11'6" x 8'10" (3500 x 2700mm)

**TOTAL AREA**  
771 sq ft (71.6 sq m)

**Terrace**  
300.43 sq ft (27.91 sq m)

## Plot 71

**Living/Dining/Kitchen**  
22'0" x 15'9" (6700 x 4800mm)

**Bedroom 1**  
13'1" x 9'2" (4000 x 2800mm)

**TOTAL AREA**  
555 sq ft (51.6 sq m)

**Terrace**  
101.24 sq ft (9.41 sq m)

## Plot 72

**Living/Dining/Kitchen**  
24'7" x 16'1" (7500 x 4900mm)

**Bedroom 1**  
12'2" x 9'10" (3700 x 3000mm)

**Bedroom 2**  
14'5" x 9'2" (4400 x 2800mm)

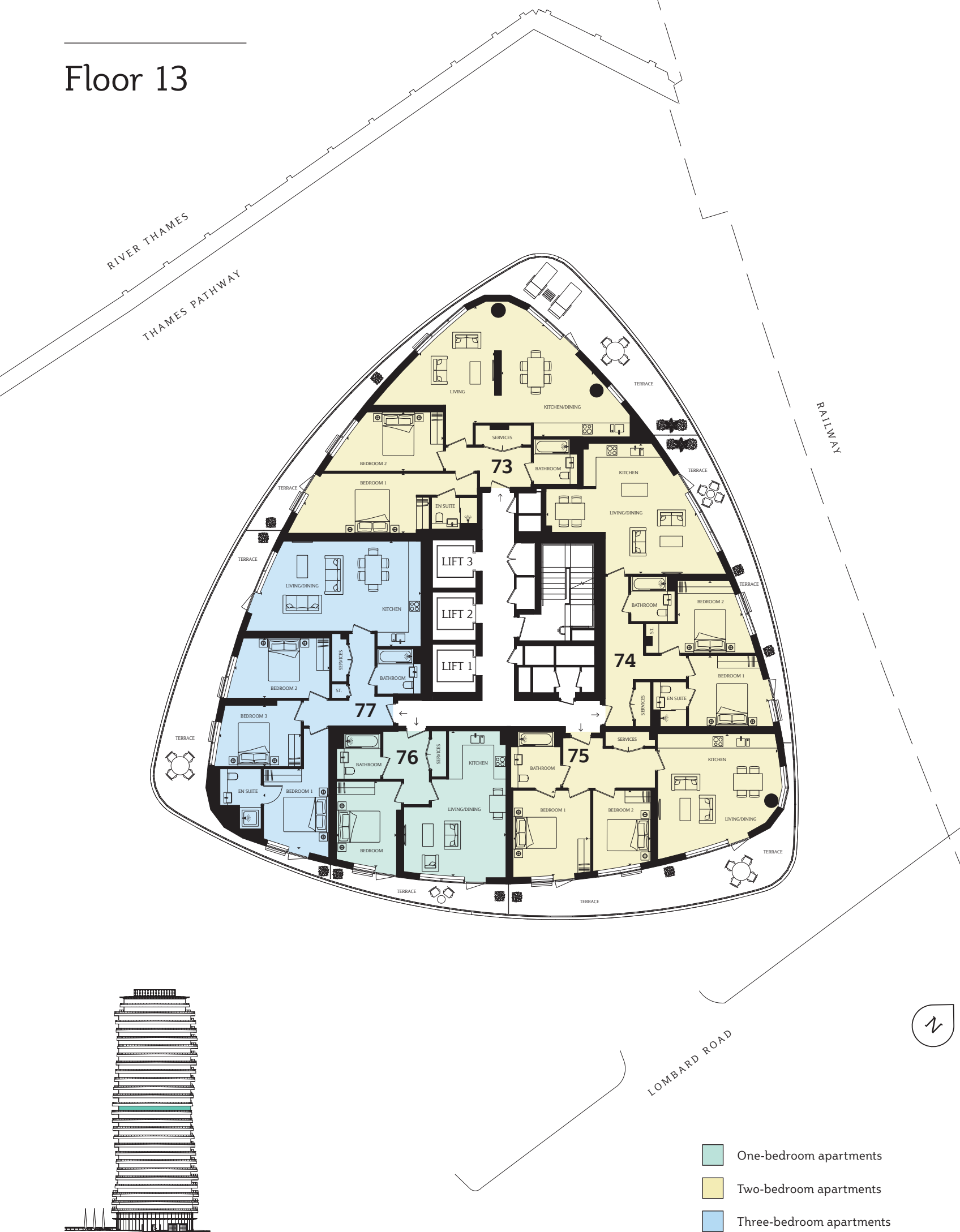
**Bedroom 3**  
12'6" x 9'4" (3800 x 2850mm)

**TOTAL AREA**  
1015 sq ft (94.3 sq m)

**Terrace**  
337.32 sq ft (31.34 sq m)



# Floor 13



## Plot 73

**Living**  
17'9" x 11'6" (5400 x 3500mm)

**Kitchen/Dining**  
17'1" x 13'9" (5200 x 4200mm)

**Bedroom 1**  
19'0" x 9'2" (5800 x 2800mm)

**Bedroom 2**  
14'9" x 9'0" (4500 x 2750mm)

**TOTAL AREA**  
1040 sq ft (96.6 sq m)

**Terrace**  
398.93 sq ft (37.06 sq m)

## Plot 76

**Living/Dining/Kitchen**  
22'0" x 15'9" (6700 x 4800mm)

**Bedroom 1**  
13'1" x 9'2" (4000 x 2800mm)

**TOTAL AREA**  
555 sq ft (51.6 sq m)

**Terrace**  
98.02 sq ft (9.11 sq m)

## Plot 74

**Living/Dining/Kitchen**  
23'0" x 19'8" (7000 x 6000mm)

**Bedroom 1**  
12'2" x 10'10" (3700 x 3300mm)

**Bedroom 2**  
10'10" x 9'10" (3300 x 3000mm)

**TOTAL AREA**  
876 sq ft (81.4 sq m)

**Terrace**  
178.87 sq ft (16.62 sq m)

## Plot 77

**Living/Dining/Kitchen**  
24'7" x 16'1" (7500 x 4900mm)

**Bedroom 1**  
12'2" x 9'10" (3700 x 3000mm)

**Bedroom 2**  
14'5" x 9'2" (4400 x 2800mm)

**Bedroom 3**  
12'6" x 9'4" (3800 x 2850mm)

**TOTAL AREA**  
1015 sq ft (94.3 sq m)

**Terrace**  
343.98 sq ft (31.96 sq m)

## Plot 75

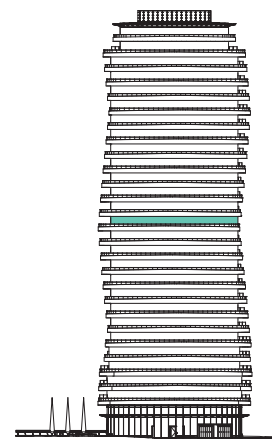
**Living/Dining/Kitchen**  
18'1" x 16'9" (5500 x 5100mm)

**Bedroom 1**  
13'1" x 11'10" (4000 x 3600mm)

**Bedroom 2**  
11'6" x 8'10" (3500 x 2700mm)

**TOTAL AREA**  
771 sq ft (71.6 sq m)

**Terrace**  
306.67 sq ft (28.49 sq m)



# Floor 14



## Plot 78

**Living**  
17'9" x 11'6" (5400 x 3500mm)

**Kitchen/Dining**  
17'1" x 13'9" (5200 x 4200mm)

**Bedroom 1**  
19'0" x 9'2" (5800 x 2800mm)

**Bedroom 2**  
14'9" x 9'0" (4500 x 2750mm)

**TOTAL AREA**  
1040 sq ft (96.6 sq m)

**Terrace**  
400.66 sq ft (37.22 sq m)

## Plot 79

**Living/Dining/Kitchen**  
23'0" x 19'8" (7000 x 6000mm)

**Bedroom 1**  
12'2" x 10'10" (3700 x 3300mm)

**Bedroom 2**  
10'10" x 9'10" (3300 x 3000mm)

**TOTAL AREA**  
876 sq ft (81.4 sq m)

**Terrace**  
186.1 sq ft (17.29 sq m)

## Plot 80

**Living/Dining/Kitchen**  
18'4" x 16'1" (5600 x 4900mm)

**Bedroom 1**  
11'2" x 9'2" (3400 x 2800mm)

**Bedroom 2**  
13'9" x 9'2" (4200 x 2800mm)

**TOTAL AREA**  
773 sq ft (71.8 sq m)

**Terrace**  
300.75 sq ft (27.94 sq m)

## Plot 81

**Living/Dining/Kitchen**  
22'0" x 15'9" (6700 x 4800mm)

**Bedroom 1**  
13'1" x 9'2" (4000 x 2800mm)

**TOTAL AREA**  
555 sq ft (51.6 sq m)

**Terrace**  
101.24 sq ft (9.41 sq m)

## Plot 82

**Living/Dining/Kitchen**  
24'7" x 16'1" (7500 x 4900mm)

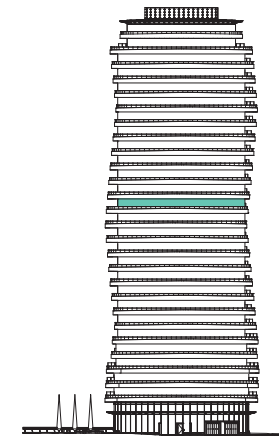
**Bedroom 1**  
12'2" x 9'10" (3700 x 3000mm)

**Bedroom 2**  
14'5" x 9'2" (4400 x 2800mm)

**Bedroom 3**  
12'6" x 9'4" (3800 x 2850mm)

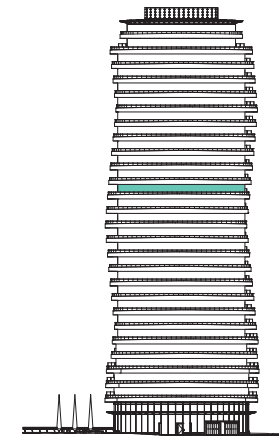
**TOTAL AREA**  
1015 sq ft (94.3 sq m)

**Terrace**  
337.32 sq ft (31.34 sq m)





# Floor 15



- One-bedroom apartments
- Two-bedroom apartments
- Three-bedroom apartments

## Plot 83

**Living**  
17'9" x 11'6" (5400 x 3500mm)

**Kitchen/Dining**  
17'1" x 13'9" (5200 x 4200mm)

**Bedroom 1**  
19'0" x 9'2" (5800 x 2800mm)

**Bedroom 2**  
14'9" x 9'0" (4500 x 2750mm)

**TOTAL AREA**  
1040 sq ft (96.6 sq m)

**Terrace**  
402.71 sq ft (37.41 sq m)

## Plot 84

**Living/Dining/Kitchen**  
23'0" x 19'8" (7000 x 6000mm)

**Bedroom 1**  
12'2" x 10'10" (3700 x 3300mm)

**Bedroom 2**  
10'10" x 9'10" (3300 x 3000mm)

**TOTAL AREA**  
876 sq ft (81.4 sq m)

**Terrace**  
196.25 sq ft (18.23 sq m)

## Plot 85

**Living/Dining/Kitchen**  
18'4" x 16'1" (5600 x 4900mm)

**Bedroom 1**  
11'2" x 9'2" (3400 x 2800mm)

**Bedroom 2**  
13'9" x 9'2" (4200 x 2800mm)

**TOTAL AREA**  
773 sq ft (71.8 sq m)

**Terrace**  
290.77 sq ft (27.01 sq m)

## Plot 86

**Living/Dining/Kitchen**  
22'0" x 15'9" (6700 x 4800mm)

**Bedroom 1**  
13'1" x 9'2" (4000 x 2800mm)

**TOTAL AREA**  
555 sq ft (51.6 sq m)

**Terrace**  
106.29 sq ft (9.87 sq m)

## Plot 87

**Living/Dining/Kitchen**  
24'7" x 16'1" (7500 x 4900mm)

**Bedroom 1**  
12'2" x 9'10" (3700 x 3000mm)

**Bedroom 2**  
14'5" x 9'2" (4400 x 2800mm)

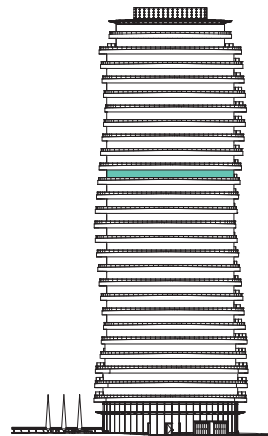
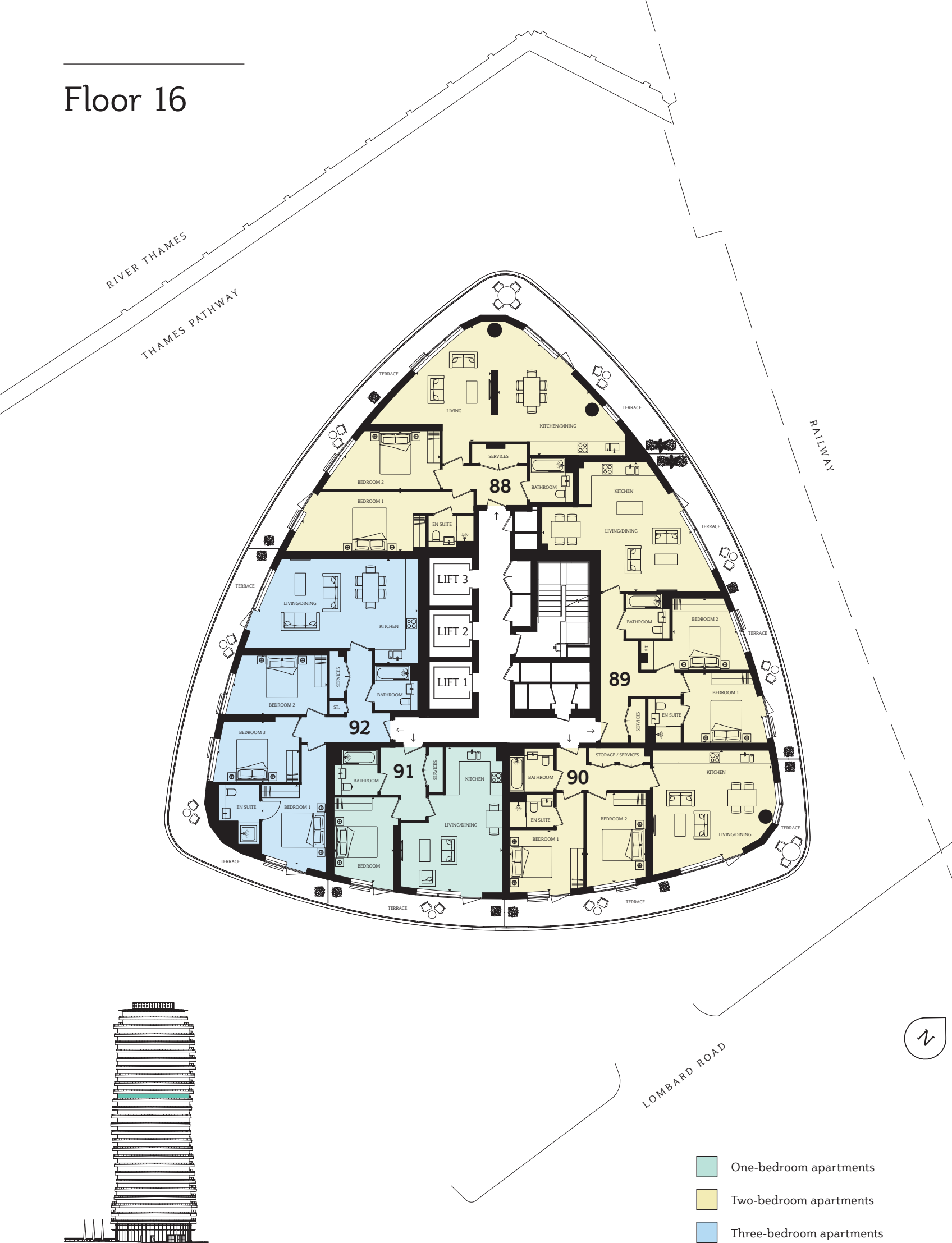
**Bedroom 3**  
12'6" x 9'4" (3800 x 2850mm)

**TOTAL AREA**  
1015 sq ft (94.3 sq m)

**Terrace**  
330.4 sq ft (30.7 sq m)



# Floor 16





# Floor 17



## Plot 93

**Living**  
17'9" x 11'6" (5400 x 3500mm)

**Kitchen/Dining**  
17'1" x 13'9" (5200 x 4200mm)

**Bedroom 1**  
19'0" x 9'2" (5800 x 2800mm)

**Bedroom 2**  
14'9" x 9'0" (4500 x 2750mm)

**TOTAL AREA**  
1040 sq ft (96.6 sq m)

**Terrace**  
406.28 sq ft (37.88 sq m)

## Plot 94

**Living/Dining/Kitchen**  
23'0" x 19'8" (7000 x 6000mm)

**Bedroom 1**  
12'2" x 10'10" (3700 x 3300mm)

**Bedroom 2**  
10'10" x 9'10" (3300 x 3000mm)

**TOTAL AREA**  
876 sq ft (81.4 sq m)

**Terrace**  
222.54 sq ft (20.68 sq m)

## Plot 95

**Living/Dining/Kitchen**  
18'4" x 16'1" (5600 x 4900mm)

**Bedroom 1**  
11'2" x 9'2" (3400 x 2800mm)

**Bedroom 2**  
13'9" x 9'2" (4200 x 2800mm)

**TOTAL AREA**  
773 sq ft (71.8 sq m)

**Terrace**  
267.14 sq ft (24.82 sq m)

## Plot 96

**Living/Dining/Kitchen**  
22'0" x 15'9" (6700 x 4800mm)

**Bedroom 1**  
13'1" x 9'2" (4000 x 2800mm)

**TOTAL AREA**  
555 sq ft (51.6 sq m)

**Terrace**  
118.97 sq ft (11.05 sq m)

## Plot 97

**Living/Dining/Kitchen**  
24'7" x 16'1" (7500 x 4900mm)

**Bedroom 1**  
12'2" x 9'10" (3700 x 3000mm)

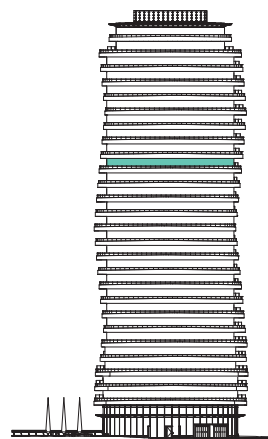
**Bedroom 2**  
14'5" x 9'2" (4400 x 2800mm)

**Bedroom 3**  
12'6" x 9'4" (3800 x 2850mm)

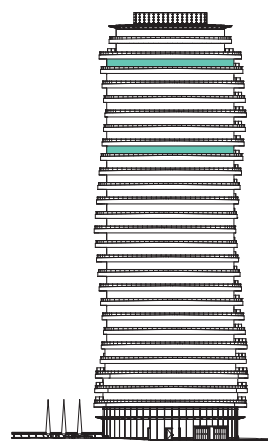
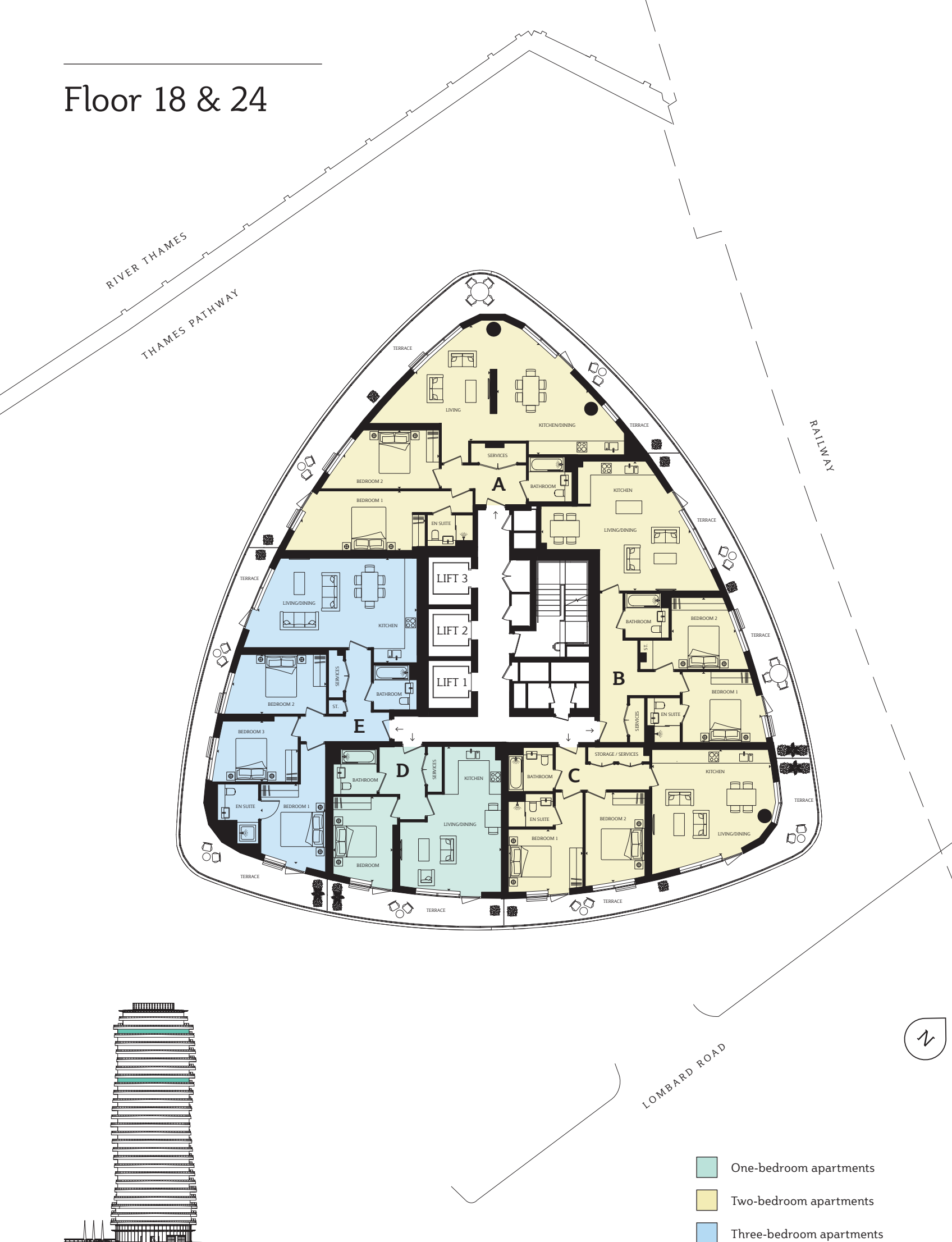
**TOTAL AREA**  
1015 sq ft (94.3 sq m)

**Terrace**  
311.26 sq ft (28.92 sq m)

- One-bedroom apartments
- Two-bedroom apartments
- Three-bedroom apartments



# Floor 18 & 24



## A

**Plot number (floor)**  
98 (18), 128 (24)

**Living**  
17'9" x 11'6" (5400 x 3500mm)

**Kitchen/Dining**  
17'1" x 13'9" (5200 x 4200mm)

**Bedroom 1**  
19'0" x 9'2" (5800 x 2800mm)

**Bedroom 2**  
14'9" x 9'0" (4500 x 2750mm)

**TOTAL AREA**  
1040 sq ft (96.6 sq m)

**Terrace**  
407.75 sq ft (37.88 sq m)

## D

**Plot number (floor)**  
101 (18), 131 (24)

**Living/Dining/Kitchen**  
22'0" x 15'9" (6700 x 4800mm)

**Bedroom 1**  
13'1" x 9'2" (4000 x 2800mm)

**TOTAL AREA**  
555 sq ft (51.6 sq m)

**Terrace**  
126.6 sq ft (11.76 sq m)

## B

**Plot number (floor)**  
99 (18), 129 (24)

**Living/Dining/Kitchen**  
23'0" x 19'8" (7000 x 6000mm)

**Bedroom 1**  
12'2" x 10'10" (3700 x 3300mm)

**Bedroom 2**  
10'10" x 9'10" (3300 x 3000mm)

**TOTAL AREA**  
876 sq ft (81.4 sq m)

**Terrace**  
238.38 sq ft (22.15 sq m)

## E

**Plot number (floor)**  
102 (18), 132 (24)

**Living/Dining/Kitchen**  
24'7" x 16'1" (7500 x 4900mm)

**Bedroom 1**  
12'2" x 9'10" (3700 x 3000mm)

**Bedroom 2**  
14'5" x 9'2" (4400 x 2800mm)

**Bedroom 3**  
12'6" x 9'4" (3800 x 2850mm)

**TOTAL AREA**  
1015 sq ft (94.3 sq m)

**Terrace**  
300.26 sq ft (27.89 sq m)

## C

**Plot number (floor)**  
100 (18), 130 (24)

**Plot 100**

**Living/Dining/Kitchen**  
18'4" x 16'1" (5600 x 4900mm)

**Bedroom 1**  
11'2" x 9'2" (3400 x 2800mm)

**Bedroom 2**  
13'9" x 9'2" (4200 x 2800mm)

**TOTAL AREA**  
773 sq ft (71.8 sq m)

**Terrace**  
253.04 sq ft (23.51 sq m)

**Plot 130**

**Living/Dining/Kitchen**  
18'4" x 16'1" (5600 x 4900mm)

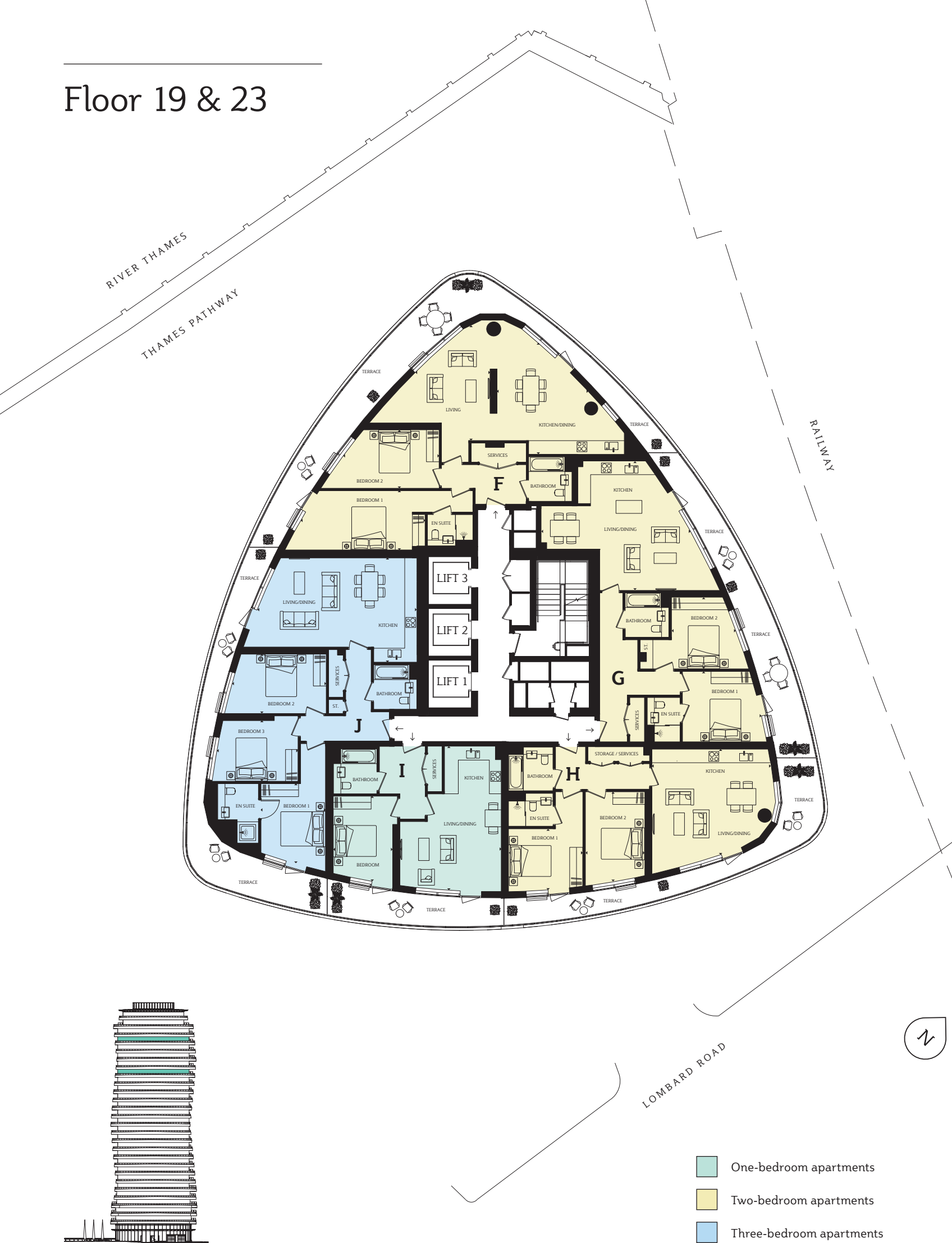
**Bedroom 1**  
11'2" x 9'2" (3400 x 2800mm)

**Bedroom 2**  
13'9" x 9'2" (4200 x 2800mm)

**TOTAL AREA**  
773 sq ft (71.8 sq m)

**Terrace**  
251.84 sq ft (23.4 sq m)

# Floor 19 & 23



## F

**Plot number (floor)**  
103 (19), 123 (23)

**Living**  
17'9" x 11'6" (5400 x 3500mm)  
**Kitchen/Dining**  
17'1" x 13'9" (5200 x 4200mm)  
**Bedroom 1**  
19'0" x 9'2" (5800 x 2800mm)  
**Bedroom 2**  
14'9" x 9'0" (4500 x 2750mm)  
**TOTAL AREA**  
1040 sq ft (96.6 sq m)  
**Terrace**  
409.02 sq ft (38 sq m)

## I

**Plot number (floor)**  
106 (19), 126 (23)

**Living/Dining/Kitchen**  
22'0" x 15'9" (6700 x 4800mm)  
**Bedroom 1**  
13'1" x 9'2" (4000 x 2800mm)  
**TOTAL AREA**  
555 sq ft (51.6 sq m)  
**Terrace**  
135.09 sq ft (12.55 sq m)

## G

**Plot number (floor)**  
104 (19), 124 (23)

**Living/Dining/Kitchen**  
23'0" x 19'8" (7000 x 6000mm)  
**Bedroom 1**  
12'2" x 10'10" (3700 x 3300mm)  
**Bedroom 2**  
10'10" x 9'10" (3300 x 3000mm)  
**TOTAL AREA**  
876 sq ft (81.4 sq m)  
**Terrace**  
256.14 sq ft (23.8 sq m)

## J

**Plot number (floor)**  
107 (19), 127 (23)

**Living/Dining/Kitchen**  
24'7" x 16'1" (7500 x 4900mm)  
**Bedroom 1**  
12'2" x 9'10" (3700 x 3000mm)  
**Bedroom 2**  
14'5" x 9'2" (4400 x 2800mm)  
**Bedroom 3**  
12'6" x 9'4" (3800 x 2850mm)  
**TOTAL AREA**  
1015 sq ft (94.3 sq m)  
**Terrace**  
288.28 sq ft (26.76 sq m)

## H

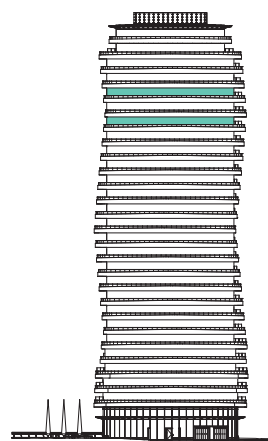
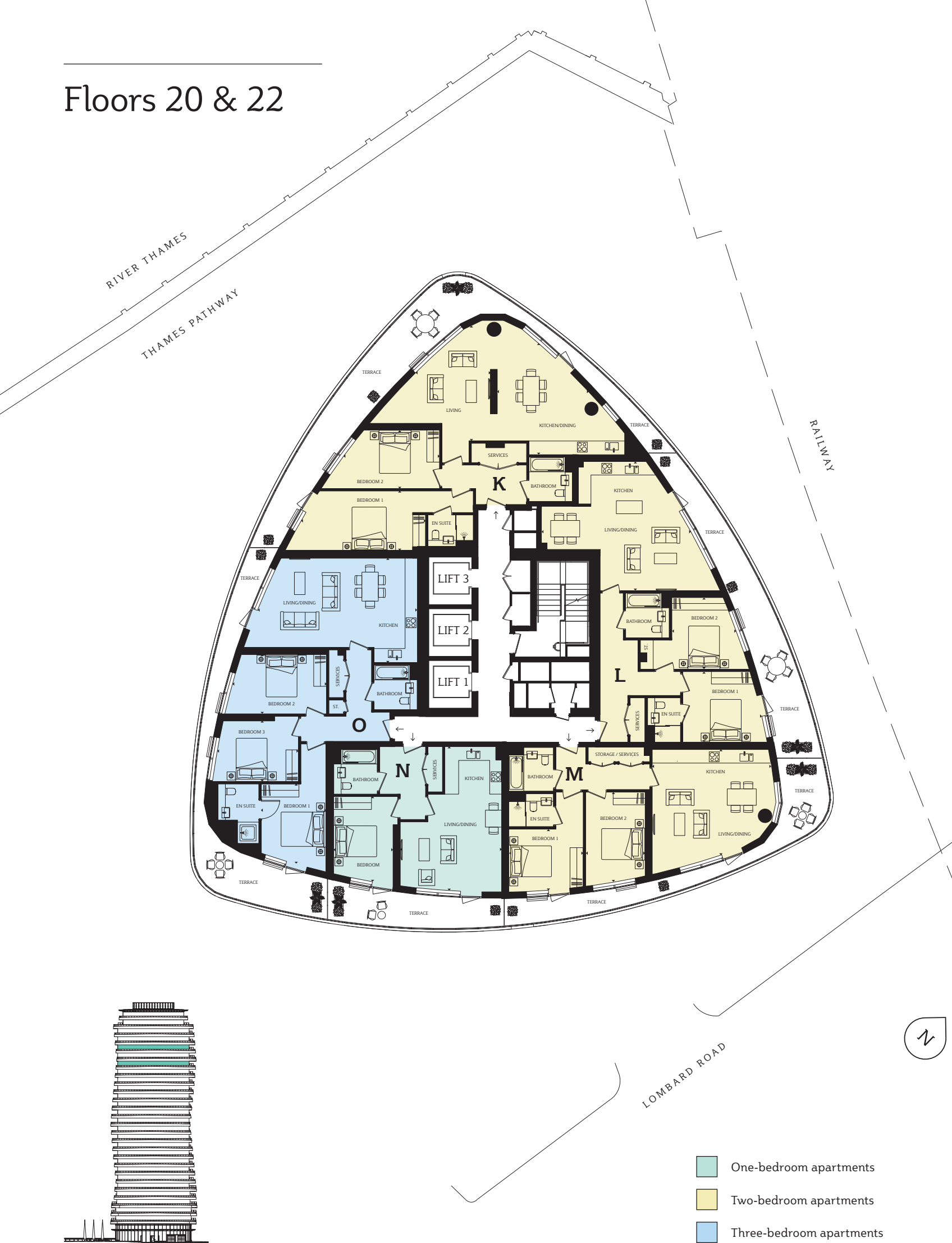
**Plot number (floor)**  
105 (19), 125 (23)

**Plot 105**  
**Living/Dining/Kitchen**  
18'4" x 16'1" (5600 x 4900mm)  
**Bedroom 1**  
11'2" x 9'2" (3400 x 2800mm)  
**Bedroom 2**  
13'9" x 9'2" (4200 x 2800mm)  
**TOTAL AREA**  
773 sq ft (71.8 sq m)  
**Terrace**  
237.32 sq ft (22.05 sq m)

**Plot 125**  
**Living/Dining/Kitchen**  
18'4" x 16'1" (5600 x 4900mm)  
**Bedroom 1**  
11'2" x 9'2" (3400 x 2800mm)  
**Bedroom 2**  
13'9" x 9'2" (4200 x 2800mm)  
**TOTAL AREA**  
773 sq ft (71.8 sq m)  
**Terrace**  
236.2 sq ft (21.94 sq m)



# Floors 20 & 22



- One-bedroom apartments
- Two-bedroom apartments
- Three-bedroom apartments

## K

**Plot number (floor)**  
108 (20), 118 (22)

**Living**  
17'9" x 11'6" (5400 x 3500mm)

**Kitchen/Dining**  
17'1" x 13'9" (5200 x 4200mm)

**Bedroom 1**  
19'0" x 9'2" (5800 x 2800mm)

**Bedroom 2**  
14'9" x 9'0" (4500 x 2750mm)

**TOTAL AREA**  
1040 sq ft (96.6 sq m)

**Terrace**  
410.03 sq ft (38.09 sq m)

## N

**Plot number (floor)**  
111 (20), 121 (22)

**Living/Dining/Kitchen**  
22'0" x 15'9" (6700 x 4800mm)

**Bedroom 1**  
13'1" x 9'2" (4000 x 2800mm)

**TOTAL AREA**  
555 sq ft (51.6 sq m)

**Terrace**  
144.45 sq ft (13.42 sq m)

## L

**Plot number (floor)**  
109 (20), 119 (22)

**Living/Dining/Kitchen**  
23'0" x 19'8" (7000 x 6000mm)

**Bedroom 1**  
12'2" x 10'10" (3700 x 3300mm)

**Bedroom 2**  
10'10" x 9'10" (3300 x 3000mm)

**TOTAL AREA**  
876 sq ft (81.4 sq m)

**Terrace**  
275.67 sq ft (25.61 sq m)

## O

**Plot number (floor)**  
112 (20), 122 (22)

**Living/Dining/Kitchen**  
24'7" x 16'1" (7500 x 4900mm)

**Bedroom 1**  
12'2" x 9'10" (3700 x 3000mm)

**Bedroom 2**  
14'5" x 9'2" (4400 x 2800mm)

**Bedroom 3**  
12'6" x 9'4" (3800 x 2850mm)

**TOTAL AREA**  
1015 sq ft (94.3 sq m)

**Terrace**  
275.34 sq ft (25.58 sq m)

## M

**Plot number (floor)**  
110 (20), 120 (22)

**Plot 110**

**Living/Dining/Kitchen**  
18'4" x 16'1" (5600 x 4900mm)

**Bedroom 1**  
11'2" x 9'2" (3400 x 2800mm)

**Bedroom 2**  
13'9" x 9'2" (4200 x 2800mm)

**TOTAL AREA**  
773 sq ft (71.8 sq m)

**Terrace**  
220.1 sq ft (20.45 sq m)

**Plot 120**

**Living/Dining/Kitchen**  
18'4" x 16'1" (5600 x 4900mm)

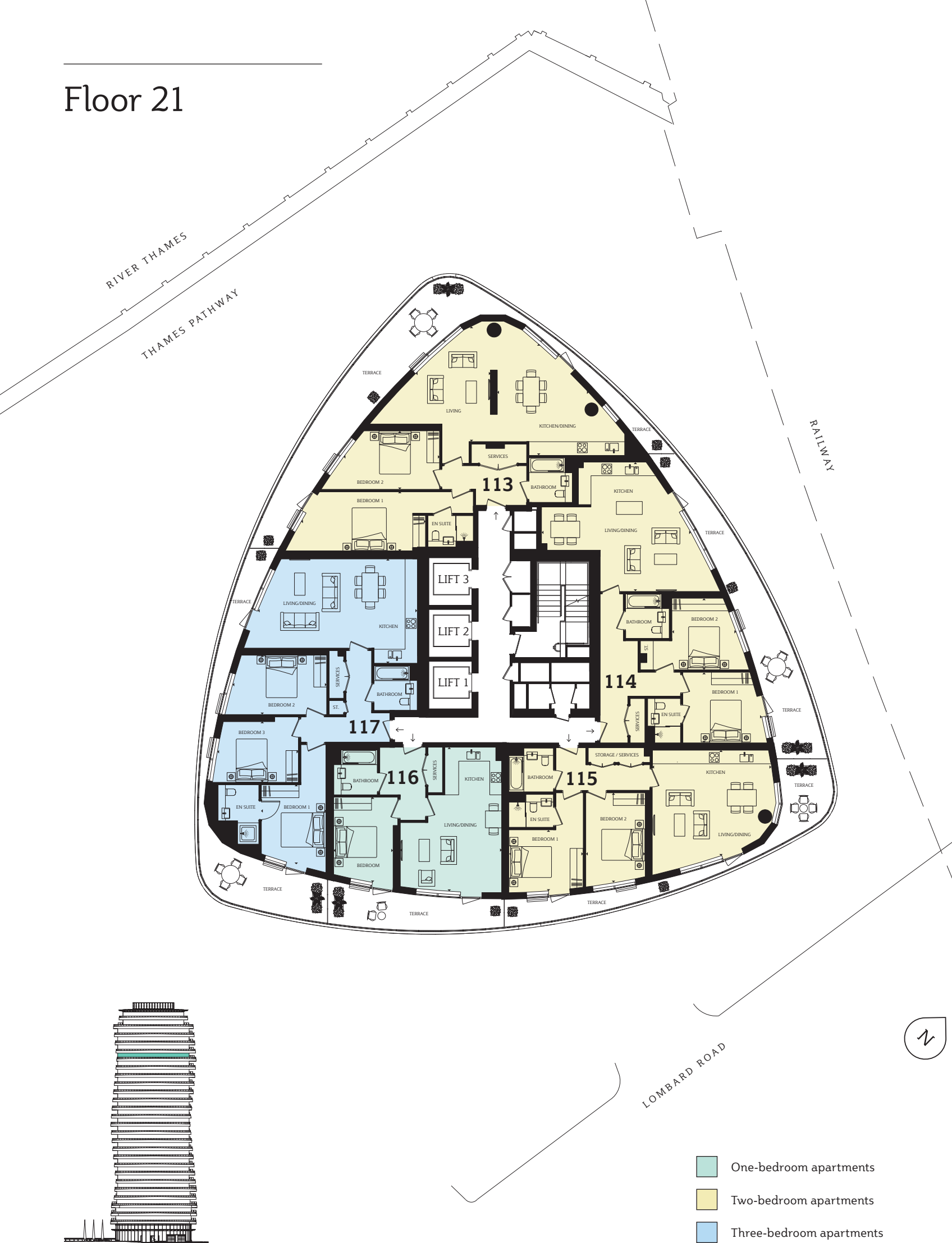
**Bedroom 1**  
11'2" x 9'2" (3400 x 2800mm)

**Bedroom 2**  
13'9" x 9'2" (4200 x 2800mm)

**TOTAL AREA**  
773 sq ft (71.8 sq m)

**Terrace**  
219.13 sq ft (20.36 sq m)

# Floor 21



## Plot 113

**Living**  
17'9" x 11'6" (5400 x 3500mm)

**Kitchen/Dining**  
17'1" x 13'9" (5200 x 4200mm)

**Bedroom 1**  
19'0" x 9'2" (5800 x 2800mm)

**Bedroom 2**  
14'9" x 9'0" (4500 x 2750mm)

**TOTAL AREA**  
1040 sq ft (96.6 sq m)

**Terrace**  
409.64 sq ft (38.06 sq m)

## Plot 114

**Living/Dining/Kitchen**  
23'0" x 19'8" (7000 x 6000mm)

**Bedroom 1**  
12'2" x 10'10" (3700 x 3300mm)

**Bedroom 2**  
10'10" x 9'10" (3300 x 3000mm)

**TOTAL AREA**  
876 sq ft (81.4 sq m)

**Terrace**  
291.45 sq ft (27.08 sq m)

## Plot 115

**Living/Dining/Kitchen**  
18'4" x 16'1" (5600 x 4900mm)

**Bedroom 1**  
11'2" x 9'2" (3400 x 2800mm)

**Bedroom 2**  
13'9" x 9'2" (4200 x 2800mm)

**TOTAL AREA**  
773 sq ft (71.8 sq m)

**Terrace**  
206.01 sq ft (19.14 sq m)

## Plot 116

**Living/Dining/Kitchen**  
22'0" x 15'9" (6700 x 4800mm)

**Bedroom 1**  
13'1" x 9'2" (4000 x 2800mm)

**TOTAL AREA**  
555 sq ft (51.6 sq m)

**Terrace**  
152.04 sq ft (14.13 sq m)

## Plot 117

**Living/Dining/Kitchen**  
24'7" x 16'1" (7500 x 4900mm)

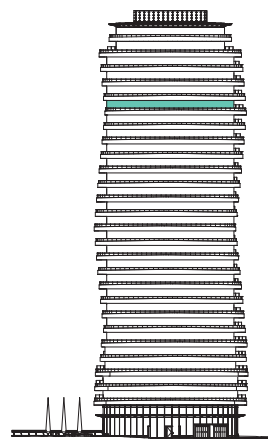
**Bedroom 1**  
12'2" x 9'10" (3700 x 3000mm)

**Bedroom 2**  
14'5" x 9'2" (4400 x 2800mm)

**Bedroom 3**  
12'6" x 9'4" (3800 x 2850mm)

**TOTAL AREA**  
1015 sq ft (94.3 sq m)

**Terrace**  
264.06 sq ft (24.53 sq m)







Computer generated image is indicative only.

## Specification

General	Flooring	Bathroom
Polished chrome door furniture	Engineered wood flooring throughout living areas	Porcelain tiling to bathroom walls and floor
Fitted wardrobes to bedroom with sliding doors and soft closers (master bedroom only)	Carpets to all bedrooms	Kaldewei bath to main bathroom with Grohe thermostat and shower head
Underfloor heating throughout with thermostat sensor	<b>Kitchen</b>	Grohe thermostat to en suite shower with Grohe shower head
Comfort cooling to principle rooms	German-fitted handleless kitchen	Duravit semi-recessed basin with Grohe mixer tap
Downlighters	Silestone upstands	Grohe cistern with Grohe dual flush wall plate
Touchscreen door entry system to main building entrance	Carron Phoenix Zeta 1.5 bowl underslung sink	Merlyn screen to main bathroom bath and en suite shower
	Grohe mixer tap	Walk-in shower to en suite
	AEG multifunction oven, induction hob, ceiling hood or integrated telescopic hood, fridge/freezer, dishwasher, warming drawer, wine cooler and freestanding washer/dryer	Mobiform vanity unit
	Built in combi microwave or wall-mounted microwave (design specific)	Shaver sockets to main bathroom and en suite in vanity unit
		Silestone sink surround with silestone upstand
		Delonghi chrome finish heated towel rail



FIND YOUR OWN  
PIECE OF LONDON

+44 (0)844 811 4321

[BARRATTLONDON.COM](http://BARRATTLONDON.COM) / LOMBARDWHARF

Computer generated images, maps and development layouts are intended for illustrative purposes and should be treated as general guidance only. The features, designs, materials and visual depictions of and in our show homes and in our show home photography and computer generated images must be treated as general illustration and guidance. Images may also include upgrades which are available at extra cost. Furniture and furnishings are not included. Fixtures, fittings and specification may be subject to change as necessary and without notice and their accuracy or completeness is not guaranteed. Nor are they intended to form part of any contract or a warranty unless specifically incorporated into the contract. Please ask your sales advisor for the current specification and for details of the treatments specified for individual plots. Individual features such as windows, brick and other materials' colours may vary, as may drainage, heating and electrical layouts. Floorplans are intended to give a general indication of the proposed floor layout only. The dimensions are accurate to within + or - 50mm. Dimensions should not be used for carpet or flooring sizes, appliance spaces or items of furniture. Development layouts and landscaping, specification, dimensions and computer generated images are not intended to form part of any contract or warranty unless specifically incorporated in writing into the contract. Door swings may be subject to alteration in direction. Please confirm direction of opening with a Sales Adviser. The proposed Diamond Jubilee Footbridge currently has planning permission and is awaiting funding. Barratt London will be providing the footings for the bridge when its construction begins. The development name; Lombard Wharf is for marketing purposes only and may not be the designated postal address, which may be determined by The Post Office. All information in this document is correct to the best of our knowledge at the time of going to print June 2016.

